

Dodge, 6.7L:D, 2011+, A/C, A P415 Pump, High Pressure 9, 12 GPM

BOLT
PACKAGES:

BRACKET 716061 (Inc. items 14, 19, 20, 25, 26)

IDLER PULLEY 716106 (Inc. items 2, 17, 18)

CRANK PULLEY None

TENSIONER None

FAN SPACER None

9-5-11 ISSUE DATE

NC 9-5-11

REVISION DATE

Item Part No. Description

1.	716060	Pump plate	16.	-----	-----
2.	711785	Idler bushing	17.	110676	3/8 Flat washer
3.	711784	Intake adapter ring	18.	110705	M10 x 1.5 x 75 Bolt
4.	-----	-----	19.	110400	3/8-16 x 2 Bolt
5.	-----	-----	20.	110484	M6 x 1.0 x 16 Bolt
6.	702054	Gasket	21.	OEM	M6 Bolt
7.	740261	Idler pulley, DewEze	22.	-----	-----
8.	*	Pump	23.	102059	Cable tie, .5" x 20"
9.	742009	Clutch	24.	110425	3/8-16 x 1 1/4 Bolt
10.	-----	-----	25.	110826	3/8 Nut
11.	OEM	Air throttle body	26.	110672	3/8 Lock washer
12.	OEM	Intake tube	27.	742065	Belt, Gatorback 4081360
13.	-----	-----			
14.	110820	M10 x 1.5 x 35 Bolt			
15.	-----	-----			

FIG. 1

BELT DIAGRAM

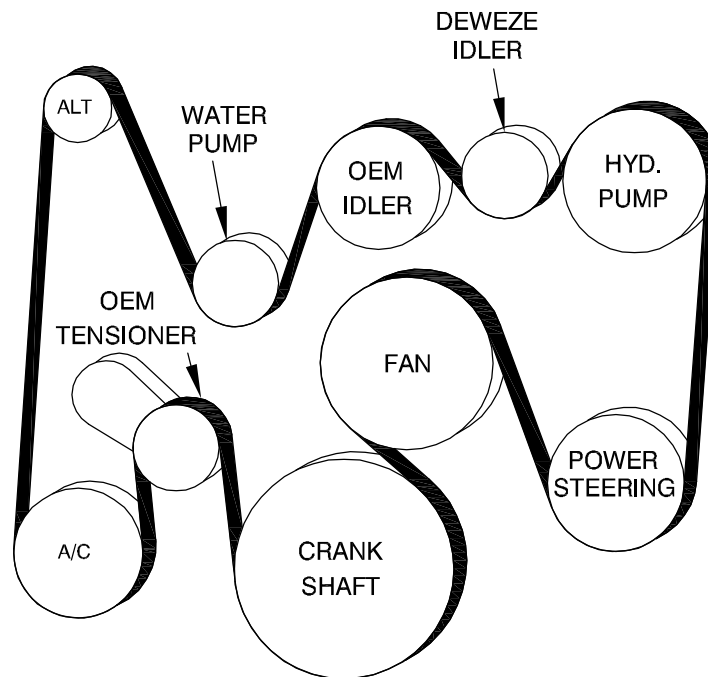


FIG. 2

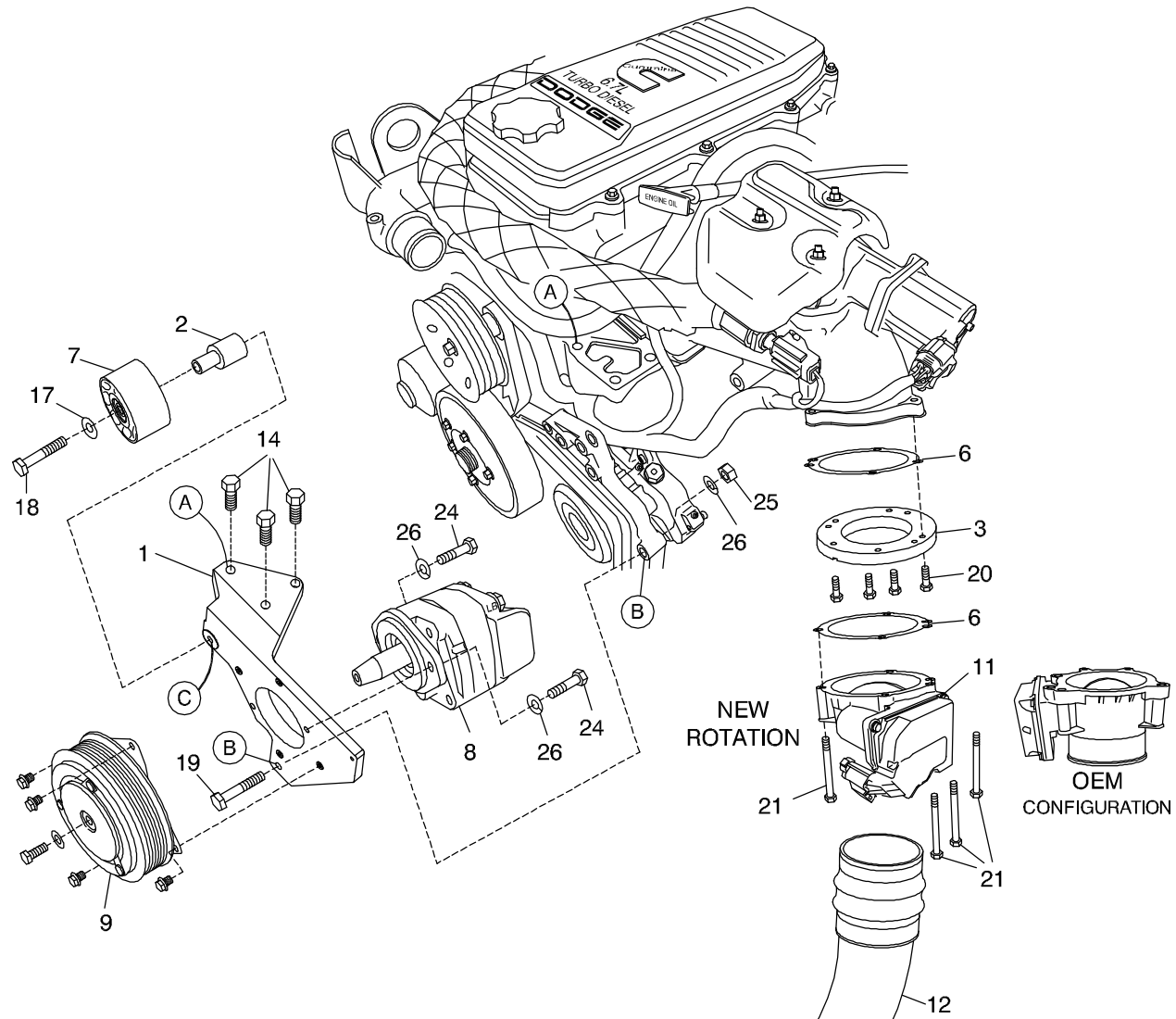
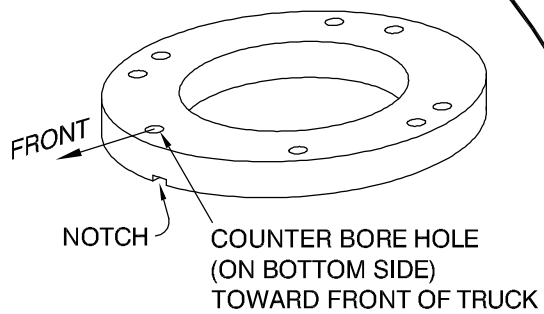
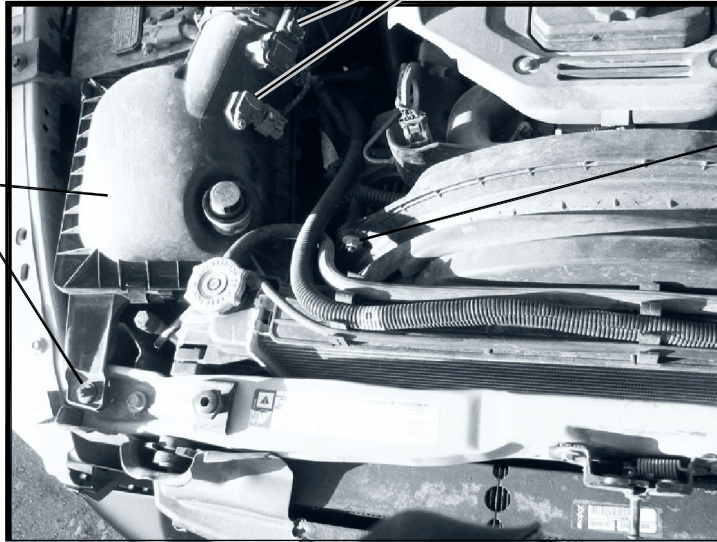


FIG. 3
ADAPTER RING ROTATION



DewEze

FIG. 4



AIR BOX

AIRBOX WIRING
PLUG-INS

SHROUD MOUNT NUT
LEFT SIDE

700538

DewEze

FIG. 5



INTERCOOLER
MOUNTING BOLT

INTERCOOLER
MOUNTING BOLT

INTERCOOLER
COVER

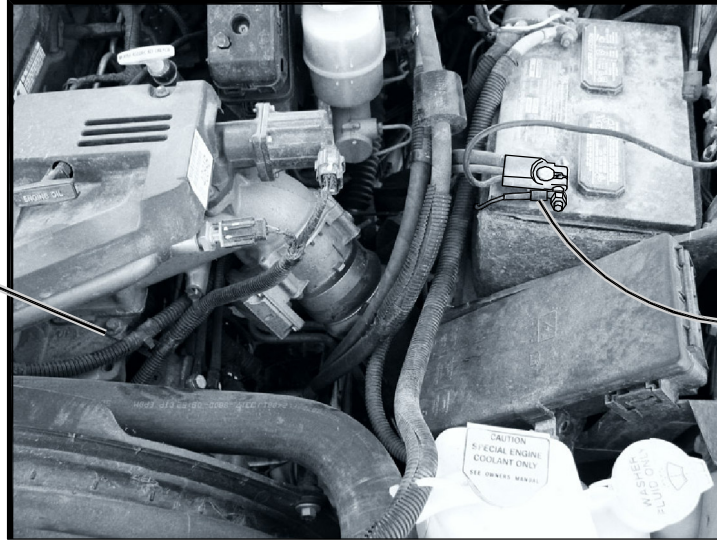
INTERCOOLER
CONDENSOR

700538

DewEze

FIG. 6

WIRING HARNESS
AND CLIP

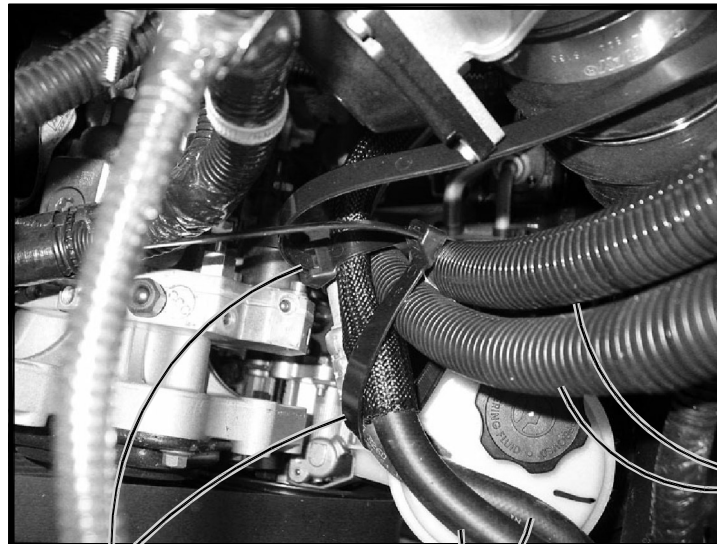


GROUND WIRE

700538

DewEze

FIG. 7



CABLE TIES
23.

TRANSMISSION
HOSES

STEERING HOSES

700538

DewEze Clutch Pump Kit 700538

Dodge 6.7L, 2011+, P415 I2, 17 GPM Pump

INSTALLATION INSTRUCTIONS

Record Pump Model No. _____ and Serial No. _____ for future reference.

Left and right directions are standing in front of the truck looking at the engine.

1. The installation of this kit requires trained decision-making concerning clearances, tying components together, rerouting, or relocating OEM components, etc. It is impossible to describe all of the clearance and vibration points, etc. in the installation instructions. Therefore, the technician must exercise professional judgment to achieve the best quality installation.
2. Disconnect the battery.
3. Remove cover on the left front of the intercooler condenser. Fig. 5.
4. Remove the left and right fan shroud mounting nuts. Fig. 4, 6.
5. Disconnect wiring plug-ins from air box. Remove air box. Fig. 4.
6. Remove the top intercooler condenser bolts on the front of the truck. Fig. 5. Loosening the clamp, separate the intercooler tube (12) and the lower part of the air throttle body (11). Lift up the intercooler condenser and pull it toward you about 2" to get the tube away from the throttle body. Remove the OEM gasket from the upper portion. Replace with a new gasket (6). Using four M6 x 16 bolts (20) mount the adapter ring (3) to the upper portion of the throttle body still attached to the truck with the counterbore holes facing down. The small notch at the outside diameter beside one of the counterbore holes indicates that hole points toward the front of the truck. Fig. 3.
7. Rotate the lower throttle body as shown in Fig. 2. Place the new gasket (6) on top of the lower throttle body and mount to the adapter ring using the OEM bolts (21). Put the condenser back into position, guiding the intercooler tube back onto the throttle body. Tie the transmission hoses to the power steering hoses for clearance using the cable ties (23) as in Fig. 7. Gently bend the steel hose ends slightly if needed to keep the hoses away.
8. Remove the OEM belt.
9. Mount the DewEze flat idler pulley (7) with the idler bushing (2), M10 x 75 bolt (18) and a 3/8 flat washer (17) at Location C on the bracket.
10. Install DewEze belt (27) on the OEM pulleys. It is easier to access the pulleys when the shroud can be pulled away and before the pump is installed.
11. Disconnect the ground wire attached to outside of battery post clamp on right side battery and reroute on top of existing truck hoses so pump hoses will go under wire. Reconnect. Fig. 6.
12. Mount the pump (8) to the back of the pump plate (1) with two 3/8 x 1 1/4 bolts (24) and two 3/8 flat washers (17). Mount the hose adapters to the pump.
13. Mount the clutch coil (9a) to the pump bracket with four 1/4 x 1/2 flange bolts (9b). Mount the clutch pulley (9c) to the pump shaft with the 5/16 x 1 1/4 bolt (9d) and heavy flat washer (9e) making sure the key is in place on the shaft.
14. Run the hoses into the engine compartment. Pull them out far enough to attach them to the pump. Attach the top of the pump bracket (1) to the engine at Location A using three M10 x 40 bolts (14). Attach the bottom of the pump bracket to the power steering bracket at Location B with the 3/8 x 2 bolt (19), and the 3/8 lock washer (26) and 3/8 nut (25) on the back.

15. Finish installing the belt (27) onto the pump pulley as shown in the diagram (Fig. 1).
16. Install air box. Install intercooler cover. Connect battery.
17. Run the engine and check for any clearance or alignment problems. Re-examine the power steering lines for clearance as the engine torques. Adjust as needed.