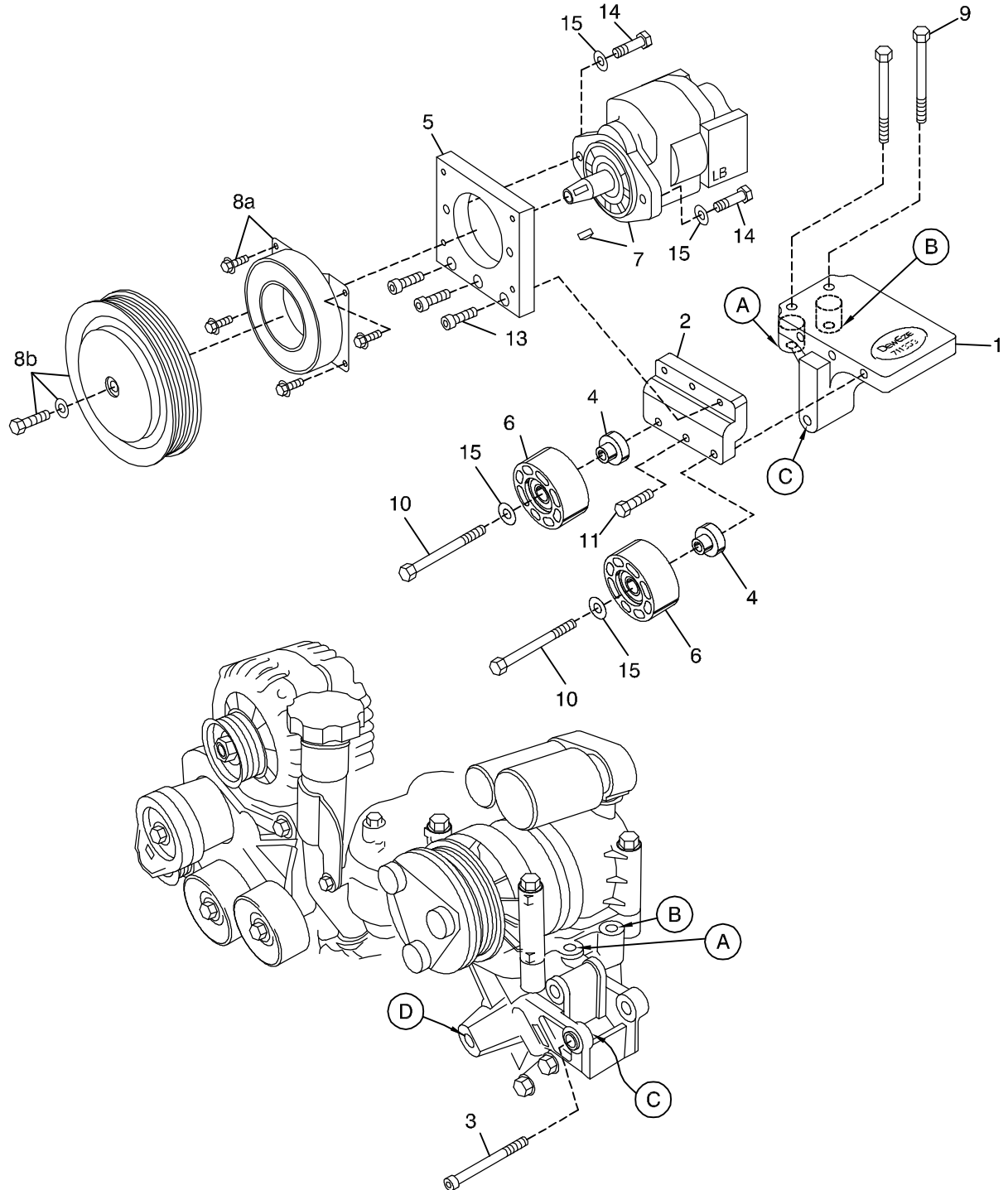


FIG. 2



Deweze Clutch Pump Kit 700518

Chevrolet/GMC 6.6L, 2011+, A Pump

INSTALLATION INSTRUCTIONS

1. Disconnect the battery.
2. Remove the OEM belt.
3. Bolt the Z adapter plate (2) to the pump mount bracket (1) with the 3/8 x 2 bolt (11) in the center hole. Insert the idler bushings (4) into the idlers (6). Mount the two idlers on the outside holes of the adapter plate with the 3/8 x 3 1/4 bolts (10) and 3/8 flat washers (15).
4. Bolt the pump plate (5) to the adapter plate (2) with three 3/8 x 1 socket head bolts (13). Torque to 20 ft-lb.
5. Press bushing at Location C (secondary alternator mounting location) forward to allow clearance for pump mount bracket (1).
6. Insert the two M10 x 70 bolts (9) through the holes in the notched end of the base plate (1) and into the air conditioner mounting bracket at locations A and B. Thread the M10 x 80 socket head bolt (3) into the hole at Location C and through the bottom lug of the pump bracket. Tighten item 3 (M10 x 80mm socket head bolt) first to insure that bracket is aligned properly (25 ft-lbs). Tighten (9) bolts next and torque to 25 ft-lb.
7. Bolt pump (7) onto pump plate (5) with two 3/8 x 1 1/4 bolts (14) and two 3/8 flat washers (15). Torque to 20 ft-lb. Hold the wiring harnesses under the pump as shown in Fig. ? Attach coil (8a) with four 1/4 x 1/2 flange bolts supplied with clutch. Torque these to 6 ft-lb. Attach clutch pulley (8b) to pump shaft with 5/16NF x 1 1/4 bolt and heavy washer supplied with clutch. Torque to 14 ft-lb.
8. Install the belt (16) as shown in the belt diagram (Fig. 1).
9. If the radiator hose contacts the clutch pulley, cut 1/2" off the radiator end of the hose to pull it away from the clutch.
10. Connect the battery.
11. Run the engine and check for any clearance or alignment problems. Adjust as needed.