



## International MaxxForce 7:D, 2009+, B Pump

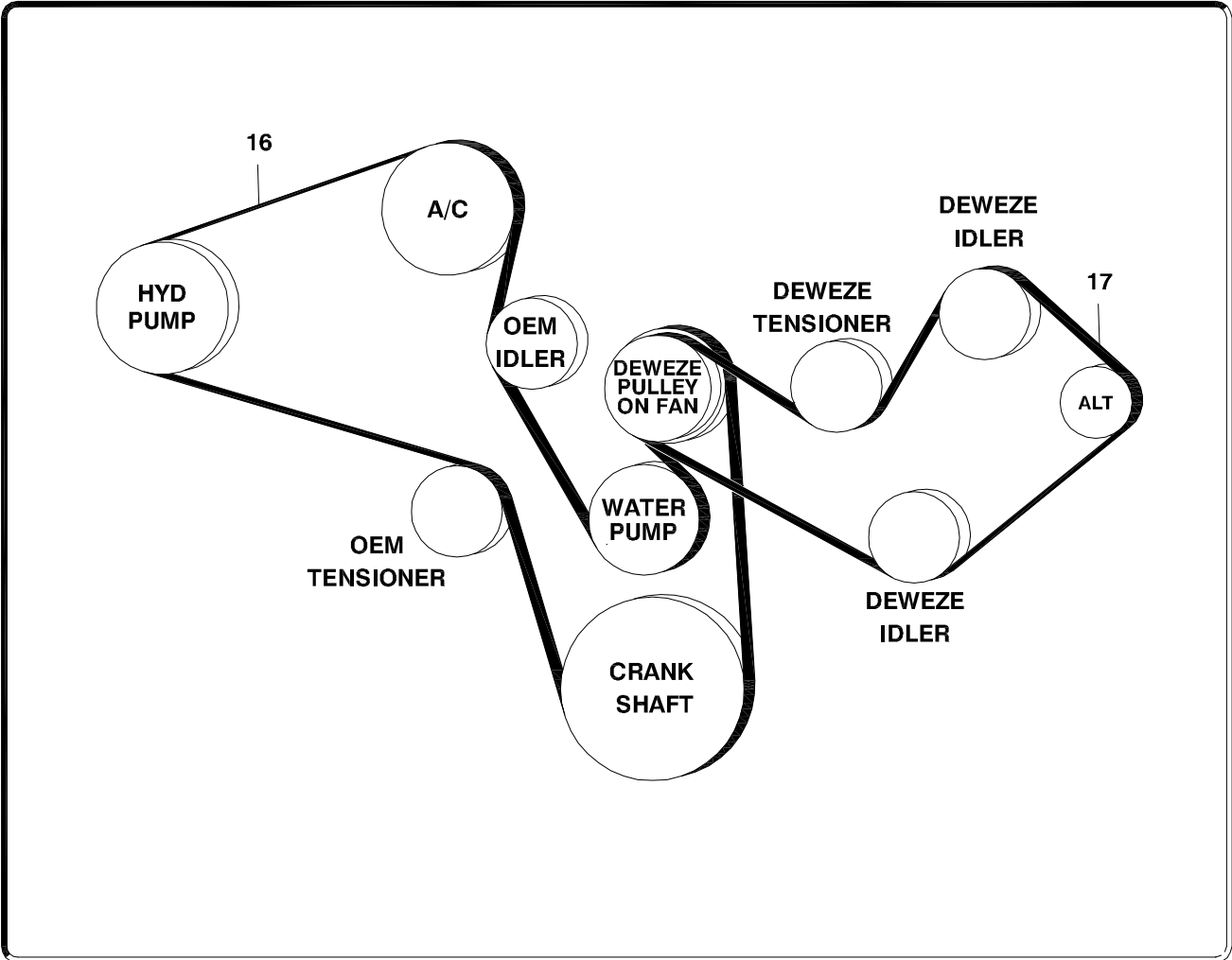
BOLT  
PACKAGES:

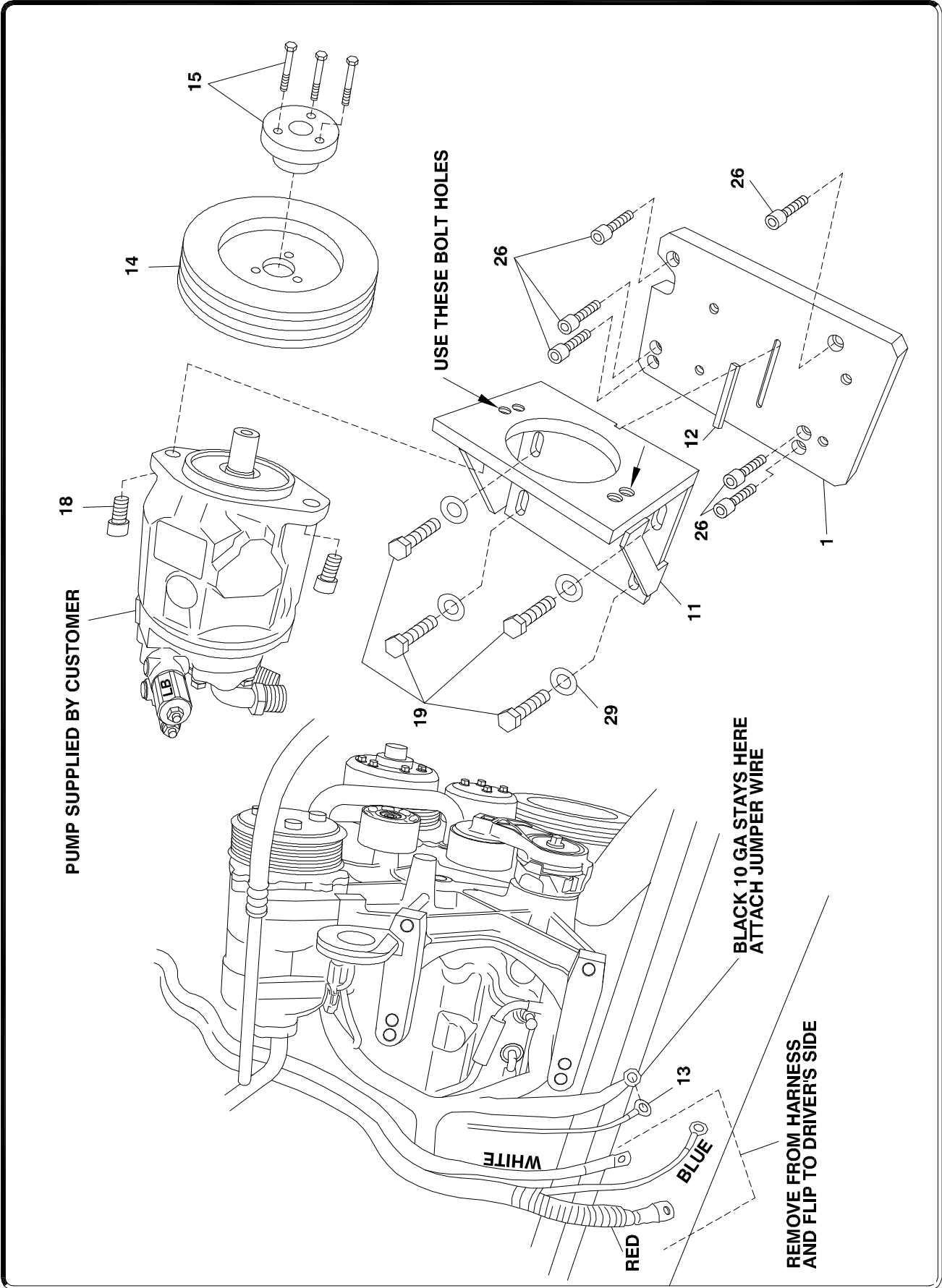
BRACKET	711995 (Inc. item 18, 19, 21-24, 26, 27, 29, 30)
IDLER PULLEY	711996 (Inc. item 7, 20, 25, 28, 30)
PULLEY	None
TENSIONER	None

7-7-09 ISSUE DATE NC 7-7-09 REVISION DATE

Item Part No. Description

1.	711987	Footmount plate	16.	740333	Belt, Pump, Micro-V K081189
2.	711988	Alternator plate	17.	742079	Belt, Alt., Micro-V K080594
3.	711989	Engine plate	18.	110898	Bolt, 1/2-13 x 1 Socket
4.	711990	Idler plate	19.	110417	Bolt, 1/2-13 x 1 1/2 Hex
5.	711991	Rear plate	20.	110899	Bolt, 1/2-13 x 3 1/4 Hex
6.	711992	Spacer, bracket	21.	110425	Bolt, 3/8-16 x 1 1/4 Socket
7.	711993	Idler bushing	22.	110178	Bolt, 3/8-16 x 1 1/2 Socket
8.	740421	Pulley, alternator drive	23.	110435	Bolt, 3/8-16 x 1 1/2 Hex
9.	740298	Tensloner	24.	110711	Bolt, 3/8-16 x 2 Socket
10.	740143	Idler	25.	110015	Bolt, 3/8-16 x 3 Hex
11.	715003	Footmount, pump	26.	110295	Bolt, M10 x 1.5 x 30 Socket
12.	711994	Key, .25 x .25 x 3	27.	110274	Bolt, M10 x 1.4 x 140 Hex
13.	735006	Jumper wire	28.	110900	Bolt, M10 x 1.5 x 200 Hex
14.	740284	Pulley, pump	29.	110658	Flat washer, 1/2
15.	510241	QD bushing	30.	110676	Flat washer, 3/8
			31.	711968	Block, alternator



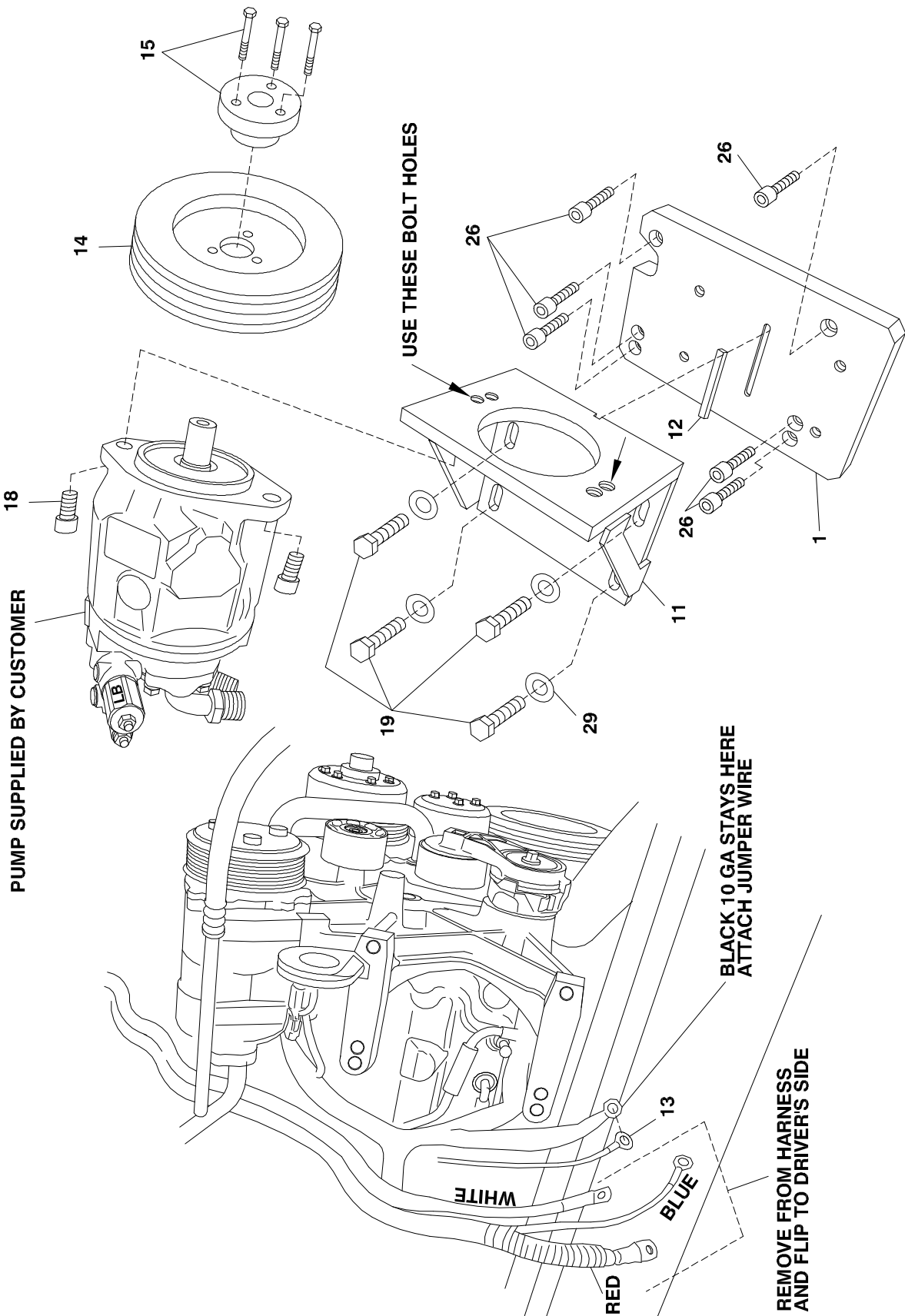


PUMP SUPPLIED BY CUSTOMER

USE THESE BOLT HOLES

BLACK 10 GA STAYS HERE  
ATTACH JUMPER WIRE

REMOVE FROM HARNESS  
AND FLIP TO DRIVER'S SIDE





# DewEZE Clutch Pump Kit 700500

International Maxxforce 7, 2009+,

## INSTALLATION INSTRUCTIONS

- The installation of this kit requires trained decision-making concerning clearances, tying components together, rerouting, or relocating OEM components, etc. It is impossible to describe all of the clearance and vibration points, etc. in the installation instructions. Therefore, the technician must exercise professional judgment to achieve the best quality installation.**
- Disconnect the batteries.
- Remove passenger side plastic inner fender, and air cleaner assembly including connection hose for clearance. Remove engine fan (Note: Nut is left-handed thread). Remove engine belt. Remove six bolts from fan drive pulley, saving the bolts as they will be reused. Remove lift strap from front driver side of engine.
- Disconnect all OEM cables from alternator noting where they are connected. Remove alternator, saving the bolts.
- Mount the alternator drive pulley (8) onto the OEM fan drive pulley using the OEM bolts.
- Assemble the alternator relocation bracket with six supplied pieces: attach engine plate (3) to idler plate (4) with two 3/8 x 1 1/2 hex head bolts (23). Attach rear plate (5) to engine plate (3) with two 3/8 x 1 1/2 socket head bolts (22). Attach alternator plate (2) to top edge of plates 4 and 5 with six 3/8 x 1 1/4 socket head bolts (21). Mount two alternator blocks (31) to plate 2 with four 3/8 x 2 socket head bolts (24) in the counterbored holes.
- Mount assembled alternator bracket where the lift bracket was removed. Install Two M10 x 140 bolts (27) in Locations A and B. Install one idler (10) and idler bushing (7) with M10 x 200 bolt (28) and 3/8 flat washer (30) at Location C. Install the other idler (10) on the edge of the vertical plate (2) with the 3/8 x 3 bolt (25) at Location D. Install the tensioner (9) with the 1/2 x 3 1/4 bolt (20). Mount the alternator using OEM bolts.
- Cut wire ties holding the red, blue, and white alternator cables across the top of the engine. Pull these wires out of the harness and flip them over to the driver's side. The black 10GA wire is built in to the harness and must stay on the passenger side. Attach the red jumper wire to this black wire and run the other end to the driver's side with the other wires. Attach all the cables to their original posts on the alternator.
- Install footmount plate (1) onto alternator bracket with six M10 x 30 socket head bolts (26). Set key (12) in keyway on plate and loosely mount foot mount (11) with four 1/2 x 1 1/2 bolts (19). Install pump with two 1/2 x 1 socket head bolts (18). Install pump pulley (14) with QD bushing (15). Align with main engine belt pulley and tighten foot mount bolts (19).
- Install pump drive belt (16) first as per diagram. Install alternator belt (17) second as per diagram.
- Reinstall fan. Reinstall inner fender.
- Reconnect the batteries.
- Run the engine and check for any clearance or alignment problems. Adjust as needed.