

FIG. 3
BRACKET, PULLEY INSTALL

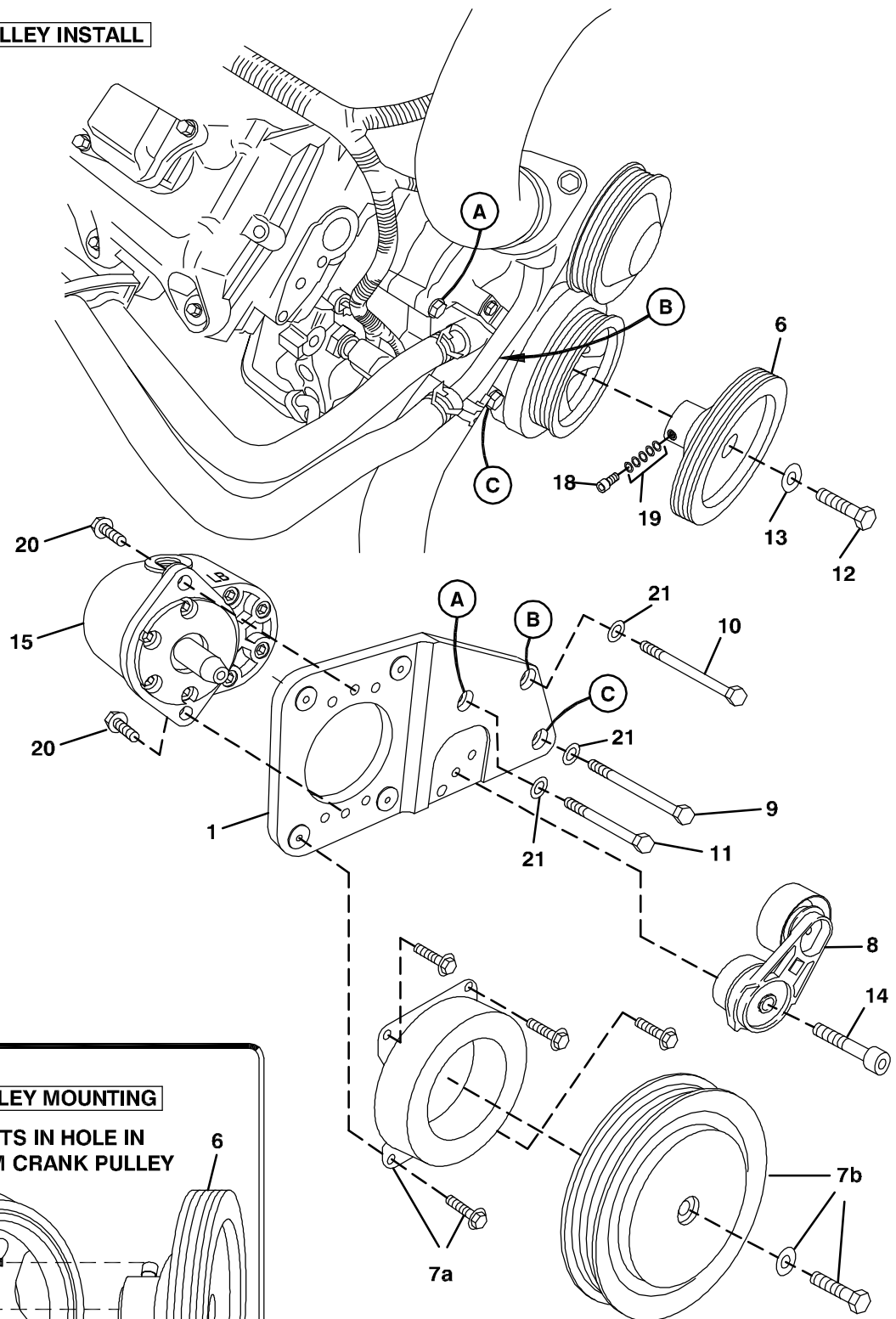
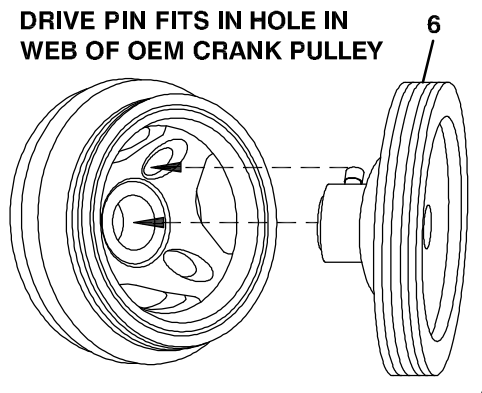


FIG. 4
CRANK PULLEY MOUNTING

DRIVE PIN FITS IN HOLE IN WEB OF OEM CRANK PULLEY



DewEze Clutch Pump Kit 700497

Dodge 5.7L Hemi, 2008+, 9 GPM Max.

INSTALLATION INSTRUCTIONS

1. The installation of this kit requires trained decision-making concerning clearances, tying components together, rerouting, or relocating OEM components, etc. It is impossible to describe all of the clearance and vibration points, etc. in the installation instructions. Therefore, the technician must exercise professional judgment to achieve the best quality installation.
2. Disconnect the battery.
3. Remove the OEM coolant/washer reservoir by removing two bolts on top of fan shroud and lifting it out.
4. Remove the OEM belt.
5. Remove OEM bolt from crankshaft dampener. Install the DewEze crank pulley (5) with the M14 bolt (12) and M14 washer (13) making sure drive pin indexes to one of the holes in the OEM pulley web. Also be sure the pilot centers in the OEM pulley.
6. Rotate the radiator and heater hose clamps to point up so they clear the pump bracket. Remove the OEM bolts at Locations A, B, and C. Install the pump bracket (1) with the M8 x 110 bolt (11) at Location A. Place the M8 x 160 bolt (10) at Location B. Place the M8 x 150 bolt (9) at Location C. Note: The tube below Hole A may need to be bent away from the back of the bracket after installation.
7. Install tensioner using the M10 x 60 socket head bolt (14). Install the pump with two 3/8 x 1 flange head bolts (20). Mount the clutch coil (7a) to the pump bracket with four 1/4 x 1/2 flange bolts.

Mount the clutch pulley (7b) to the pump shaft with the 5/16 x 1 1/4 bolt and heavy flat washer making sure the key is in place on the shaft.
8. Install belt (23) as shown in Fig. 1.
9. Remove the two rubber bushings that hold the top of the radiator to the frame of the truck. Cut the bushings in half and replace as shown in Fig. 3. The radiator will shift forward as the screws are tightened.

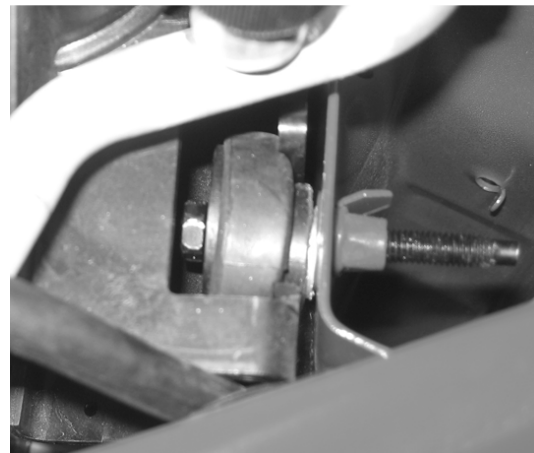


Fig. 3

10. Reinstall the coolant/washer reservoir with the shim (5) on the left tab as shown in Fig. 2. Make sure there is clearance between the reservoir and the clutch pulley.
11. Reconnect the battery.
12. Run the engine and check for any clearance or alignment problems. Adjust as needed.