

Dodge, 6.7L:D, 2007+, A/C, A Pump, 15 HP Limit

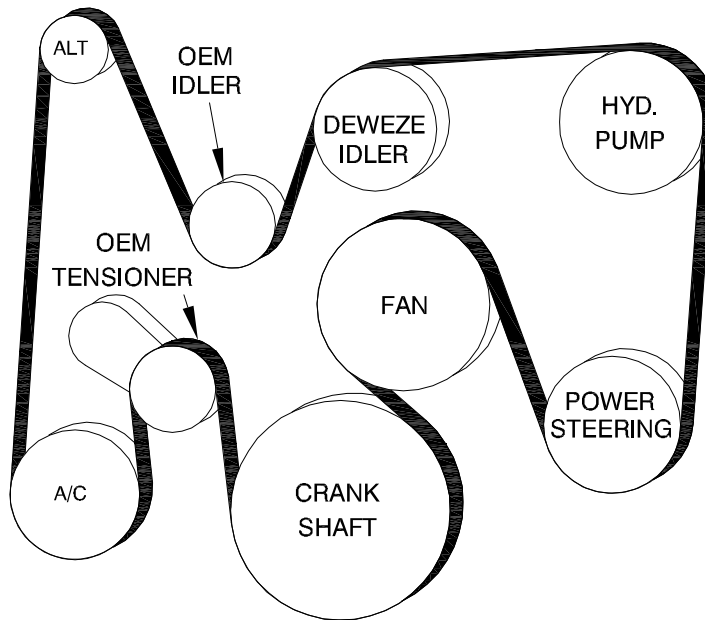
Bolt Packages:

Bracket	711787 (Inc. items 14, 16, 17, 19, 20, 22, 23, 25, 26)
Idler pulley	711451 (Inc. items 2, 17, 18)
Pulley	None
Tensioner	None

Bracket Assy.	None
Issue Date	5-15-08
Revision Date	A 11-14-08

Item	Part No.	Description
1.	711834	Pump plate
2.	711449	Idler bushing
3.	711784	Intake adapter ring
4.	-----	-----
5.	-----	-----
6.	702054	Gasket
7.	740143	Idler pulley, DewEze
8.	*	Pump
9.	742009	Clutch
10.	102036	Clamp
11.	OEM	Air throttle body
12.	OEM	Intake tube
13.	OEM	Fan shroud support, driver side
14.	110820	M10 x 1.5 x 35 Bolt
15.	OEM	Idler pulley
16.	110479	M10 x 1.5 x 30 Bolt
17.	110676	3/8 Flat washer
18.	110262	M10 x 1.5 x 75 Bolt
19.	110400	3/8-16 x 2 Bolt
20.	110484	M6 x 1.0 x 16 Bolt
21.	OEM	M6 Bolt
22.	710586	1/4-20 x 1.0 Self tap bolt
23.	110673	1/4 Flat washer
24.	110425	3/8-16 x 1 1/4 Bolt
25.	110612	3/8 Nut
26.	110672	3/8 Lock washer
27.	742063	Belt, Micro-V K081298

FIG. 1
BELT DIAGRAM



(A), (B), (C) ... Denotes bolt holes in engine to locate corresponding holes in Pump Brkt.

FIG. 2

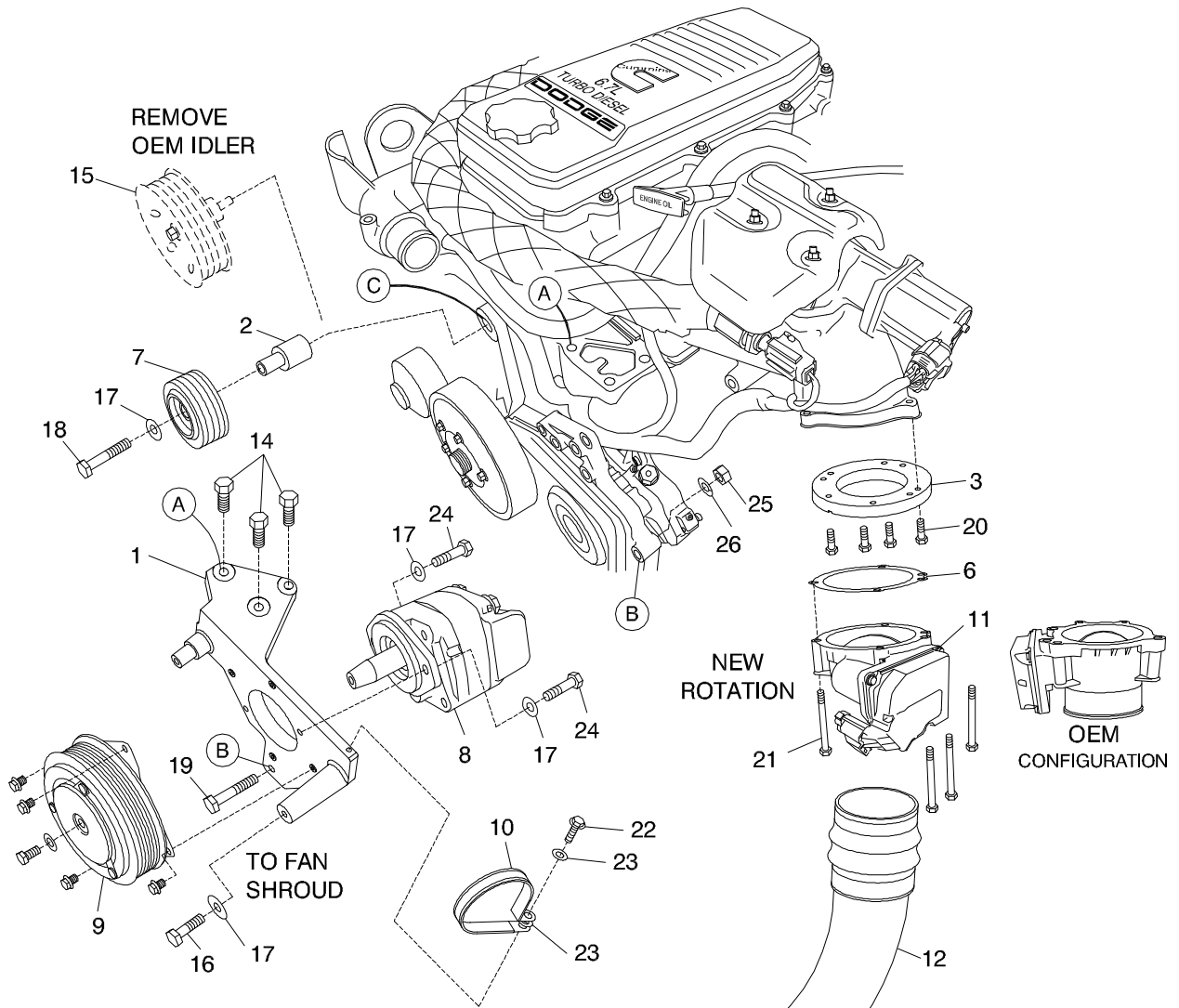
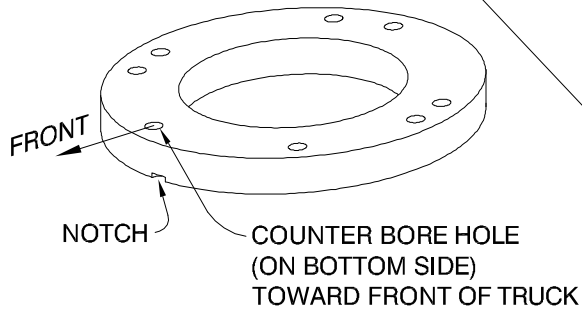


FIG. 3

ADAPTER RING ROTATION



REMOVE
OEM FAN
SHROUD
SUPPORT

DewEze Clutch Pump Kit 700488

Dodge 6.7L 2007+, 15 HP Limit

INSTALLATION INSTRUCTIONS

1. The installation of this kit requires trained decision-making concerning clearances, tying components together, rerouting, or relocating OEM components, etc. It is impossible to describe all of the clearance and vibration points, etc. in the installation instructions. Therefore, the technician must exercise professional judgment to achieve the best quality installation.
2. Disconnect the battery.
3. Drain the coolant from the radiator to below the upper radiator hose. Remove that hose.
4. Remove the fan shroud support bracket (13). Remove the OEM belt.
5. Remove the intercooler tube (12) and the lower part of the air throttle body (11). Make sure the OEM gasket is still in place on the upper portion. Using four M6 x 16 bolts (20) mount the adapter ring (3) to the upper portion of the throttle body still attached to the truck with the counterbore holes facing down. The small notch at the outside diameter beside one of the counterbore holes indicates that hole points toward the front of the truck.
6. Place the new gasket (6) on top of the lower throttle body (rotated as shown in Fig. 2) and mount to the adapter ring. Use the OEM bolts (21). Replace the OEM intercooler tube.
7. Mount the pump (8) to the back of the pump plate (1) with two 3/8 x 1 1/4 bolts (24) and two 3/8 flat washers (17). Mount the hose adapters to the pump.
8. Mount the clutch coil (9a) to the pump bracket with four 1/4 x 1/2 flange bolts (9b). Mount the clutch pulley (9c) to the pump shaft with the 5/16 x 1 1/4 bolt (9d) and heavy flat washer (9e) making sure the key is in place on the shaft.
9. Run the hoses into the engine compartment. Pull them out far enough to attach them to the pump. Attach the top of the pump bracket (1) to the engine at Location A using three M10 x 40 bolts (14). Attach the bottom of the pump bracket to the power steering bracket at Location B with the 3/8 x 2 bolt (19), and the 3/8 lock washer (26) and 3/8 nut (25) on the back.
10. Remove the OEM grooved idler pulley (15) from the front of the engine at Location C. In its place, mount the DewEze grooved idler pulley (7) with the idler bushing (2), M10 x 75 bolt (18) and a 3/8 flat washer (17). The idler mount boss on the pump mount bracket is NOT used.
11. Attach the fan shroud to the long boss on the pump plate with the M10 x 30 bolt (8) and 3/8 flat washer (9). If needed, place three 3/8 flat washers between the shroud and the bracket.
12. Install the belt (27) as shown in the diagram (Fig. 1).
13. Replace coolant and the radiator hose. Reconnect the battery.
14. Run the engine and check for any clearance or alignment problems. Adjust as needed.