

DewezeClutch Pump Kit **700455****Chevy/GMC C6500, 7.8L :D, 2006+, A Pump, Rear Port****Bolt Packages:**

Bracket	711758 (Inc. items 13, 14, 16, 19)
Idler	711759 (Inc. items 6, 11, 17, 18)
Crank pulley	None
Tensioner	None

Bracket Assy. 711764 (Inc. items 1, 2, 4, 5)

Issue Date 6-1-06

Revision Date NC 6-1-06

Item	Part No.	Description
------	----------	-------------

1.	711760	Engine bracket	13.	110488	M10 x 1.5 x 45 Bolt
2.	711761	Bridge plate, pump	14.	110526	M10 x 1.5 x 40 Bolt
3.	710936	Pump plate	15.	OEM	Bolt, upper alternator
4.	711762	Idler angle bracket, upper	16.	110487	M10 x 1.5 x 120 Bolt
5.	711763	Idler block, lower	17.	110210	M10 x 1.5 x 50 Bolt
6.	711585	Idler bushing	18.	110705	M10 x 1.5 x 55 Bolt
7.	740242	Idler, 2.50" dia.	19.	110465	3/8-16 x 1 1/4 Socket head bolt
8.	740339	Idler, 2.00" dia.	20.	OEM	Ground strap
9.	*	Pump	21.	742036	Belt, Micro-V K071098
10.	742009	Clutch			
11.	110676	3/8 Flat washer			
12.	110425	3/8-16 x 1 1/4 Bolt			

* See pump list for sizes and part numbers.

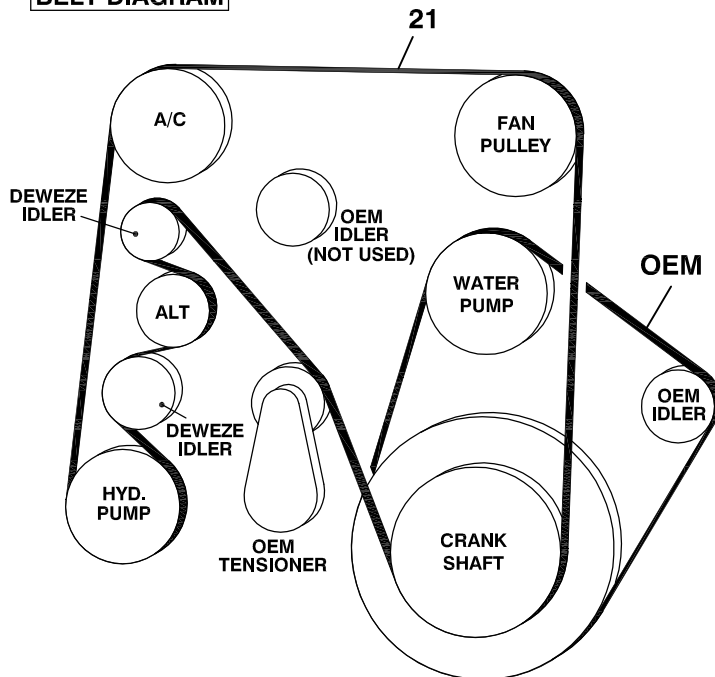
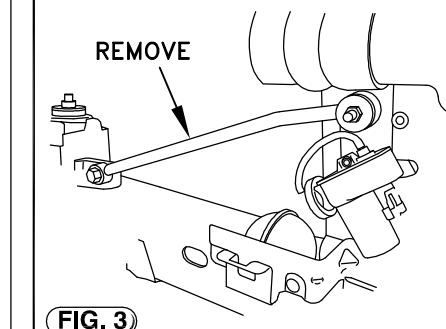
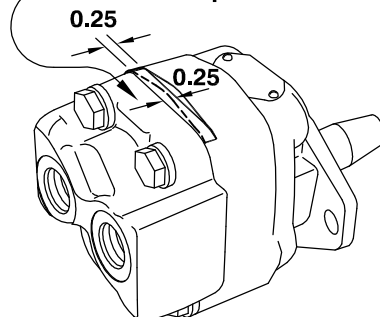
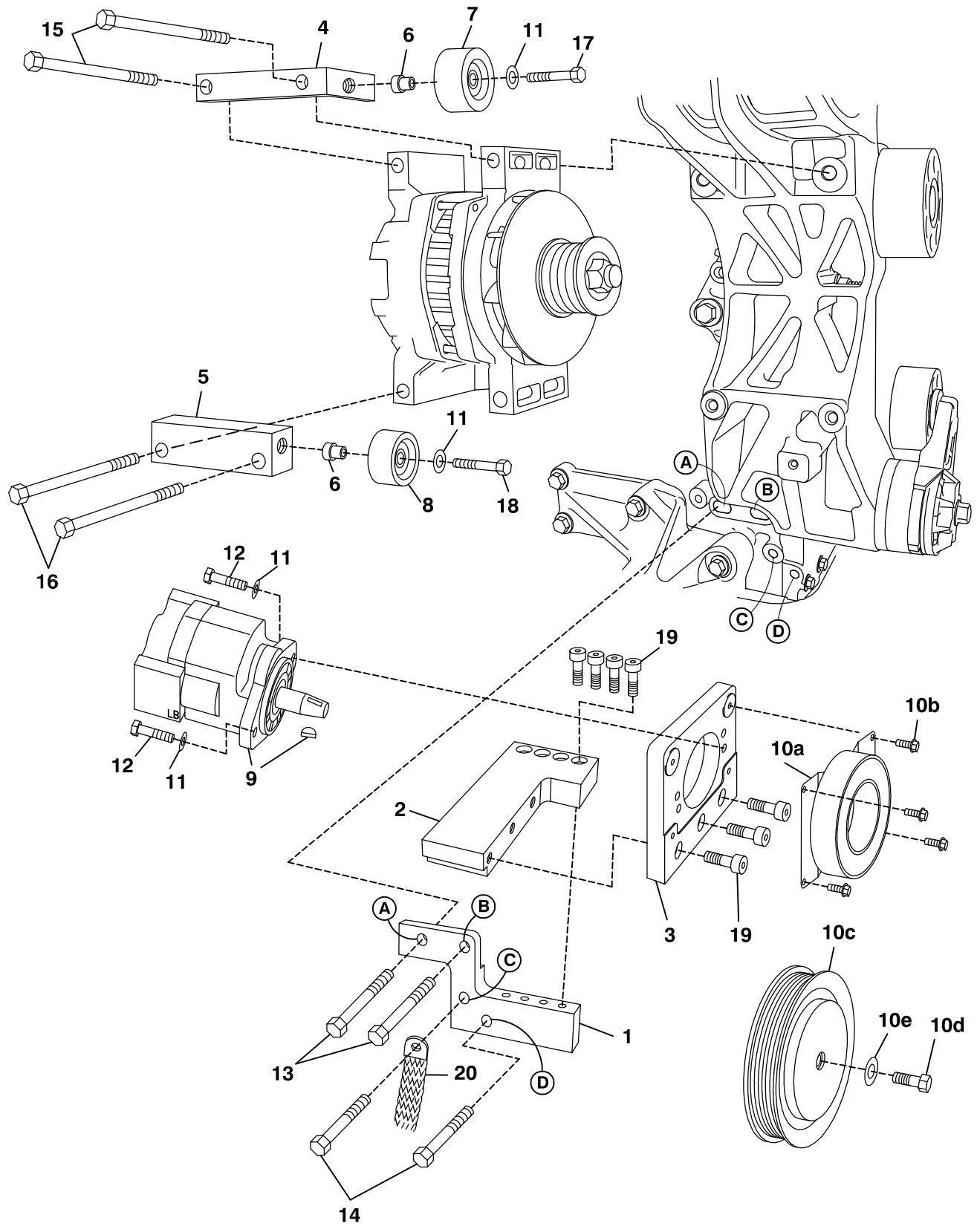
FIG. 1**BELT DIAGRAM****RADIATOR SUPPORT****FIG. 3****GRIND PUMP (12 & 17 GPM)**Grind toward front .25".
Flush with top surface.**FIG. 4**

FIG. 2



(A),(B),(C)... Denotes bolt holes in engine or pump bracket to locate mating holes in other pump bracket pieces.

DEWEZE Clutch Pump Kit 700455

Chevy/GMC C6500 7.8L Diesel 2006+

INSTALLATION INSTRUCTIONS

1. The installation of this kit requires trained decision-making concerning clearances, tying components together, rerouting, or relocating OEM components, etc. It is impossible to describe all of the clearance and vibration points, etc. in the installation instructions. Therefore, the technician must exercise professional judgment to achieve the best quality installation.
2. Disconnect the battery.
3. Remove the radiator support rod (Fig. 3).
4. Remove the OEM belt.
5. Remove the alternator. Save the top two bolts to use again.
6. Remove the ground strap (20) at Location C.
7. Attach the engine bracket (1) to the engine at Locations A and B with two M10 x 45 bolts (13) and two M10 x 40 bolts (14) at Locations C and D, replacing the ground strap (20) on top of the bracket at Location C.
8. Attach the bridge plate (2) to the top edge of the engine bracket with four 3/8 x 1 1/4 socket head bolts (19).
9. 12 and 17 GPM pumps will contact the alternator when installed. For clearance, grind the top of the pump as shown in Fig. 4. Mount the pump (9) to the back of the pump plate (3) with two 3/8 x 1 1/4 bolts (12) and two 3/8 flat washers (11). Bolt the pump plate with pump to the bridge plate with three 3/8 x 1 1/4 socket head bolts (19).
10. Mount the clutch coil (10a) to the pump bracket with four 1/4 x 1/2 flange bolts (10b). Mount the clutch pulley (10c) to the pump shaft with the 5/16 x 1 1/4 bolt (10d) and heavy flat washer (10e) making sure the key is in place on the shaft.
11. Insert the idler bushing (6) into the 2.50" dia. idler (7). Mount the idler to the top idler mount angle bracket (4) with a M10 x 50 bolt (17) with a 3/8 flat washer (11). Place this idler bracket over the top two holes in the alternator holding it in place with the OEM bolts. Mount the alternator back in its original location. Do not tighten the bolts yet.
12. Insert the idler bushing (6) into the 2.00" dia. Idler. Mount the idler to the lower idler mounting block (5) with an M10 x 55 bolt (18) with a 3/8 flat washer (11). Mount this block to the bottom holes on the alternator with the two M10 x 120 bolts. Tighten all alternator bolts.
13. Install the belt (21) as shown in the diagram (Fig. 1).
14. Replace the radiator support rod back in its original location.
15. Reconnect the battery.
16. Run the engine and check for any clearance or alignment problems. Adjust as needed.