

Ford, 6.8L:G, 2006+, Van, A/C, A Pump, Rear Port, 5-9 GPM

Bolt Packages:

Bracket	711745	(Inc. items 10-12, 14)
Idler pulley	711746	(Inc. items 4, 15, 18)
Pulley	711651	(Inc. items 18-20)
Tensioner	None	

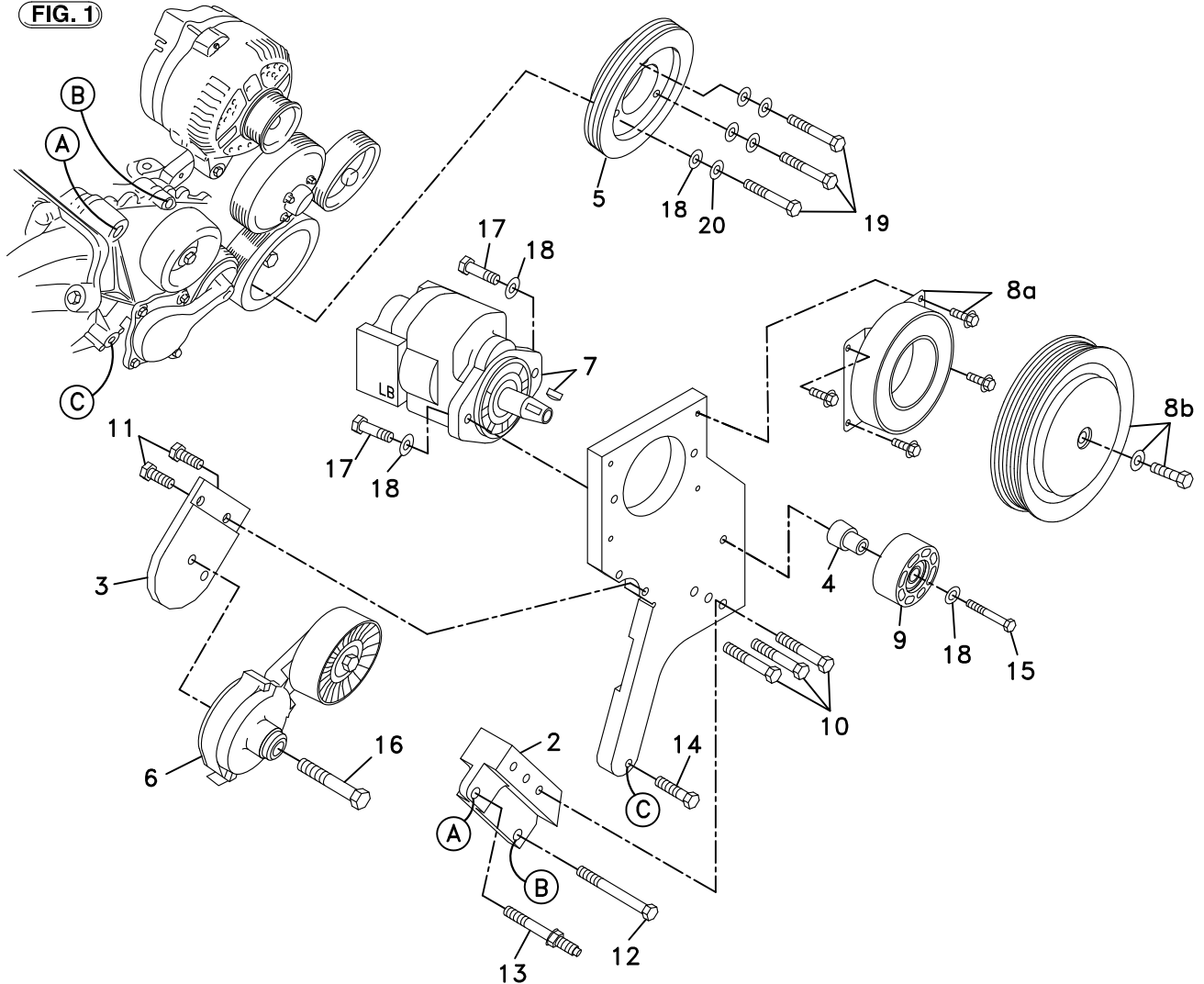
Bracket Assy.	711747	(Inc. items 1-3)
Issue Date	11-1-05	Revision Date F 4-16-09

Item Part No. Description

1.	711741	Pump bracket	13.	OEM	Bolt
2.	711742	Engine bracket	14.	110080	M8 x 35 x 1.25 Bolt
3.	711743	Tensioner bracket	15.	110180	M10 x 60 x 1.5 Bolt
4.	711647	Idler bushing	16.	110747	M12 x 75 x 1.75 Bolt
5.	740383	Crank pulley	17.	110425	3/8-16 x 1 1/4 Bolt
6.	740402	Tensioner	18.	110676	3/8 Flat washer
7.	*	Pump, 9 GPM Max.	19.	110217	M10 x 70 x 1.5
8.	740144	Clutch	20.	110689	M10 Lock washer
9.	740151	Idler	21.	742038	Belt/Micro-V K060663
10.	110435	3/8-16 x 1 1/2 Bolt	22.	711944	Plate, alternator bridge
11.	110420	3/8-16 x 1 Bolt	23.	OEM	Bolt
12.	110180	M10 x 60 x 1.5 Bolt	24.	OEM	Bolt

**OBSOLETE
KIT**

FIG. 1



(A),(B),(C)... Denotes bolt holes in engine to locate corresponding holes in Pump Brkt.

FIG. 3
CONNECTOR
BRACKET
LOCATION

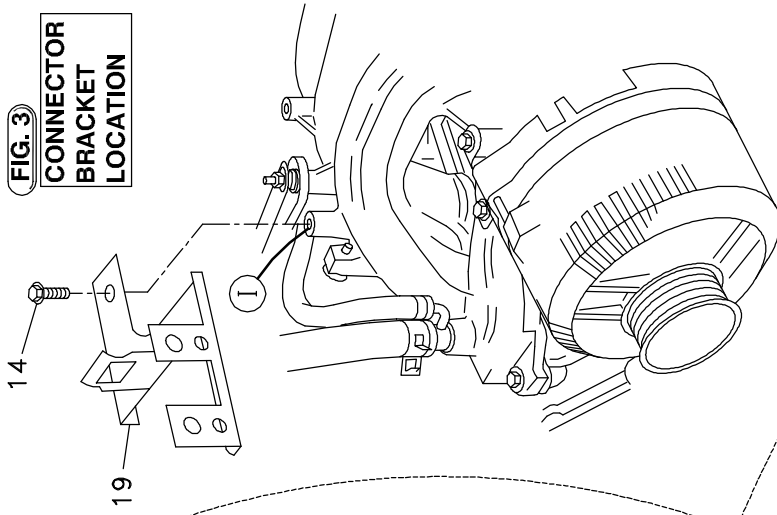


FIG. 6
MODIFY ALTERNATOR BRACKET 2009

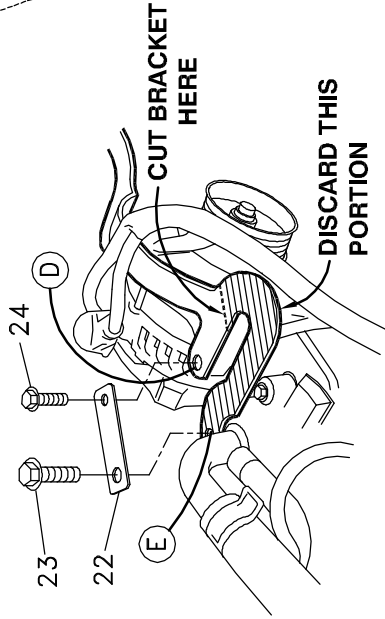


FIG. 2
ELECTRICAL CONNECTOR
MOUNTING BRACKET

AFTER MODIFICATION

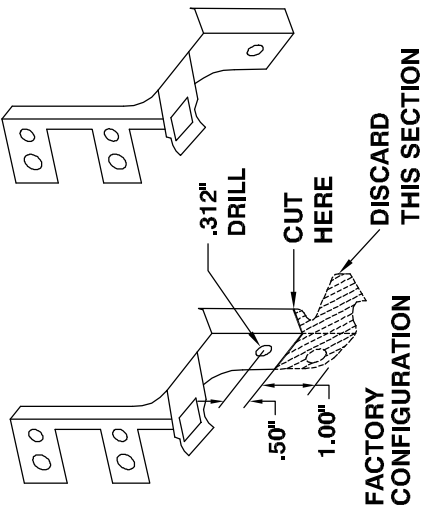


FIG. 5
REAR VIEW OF
BRACKET ASSEMBLY

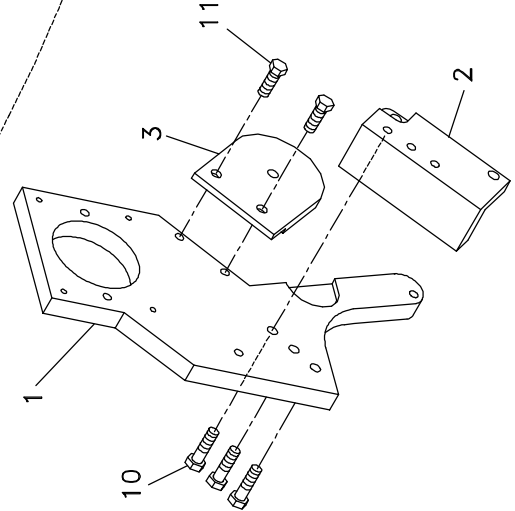
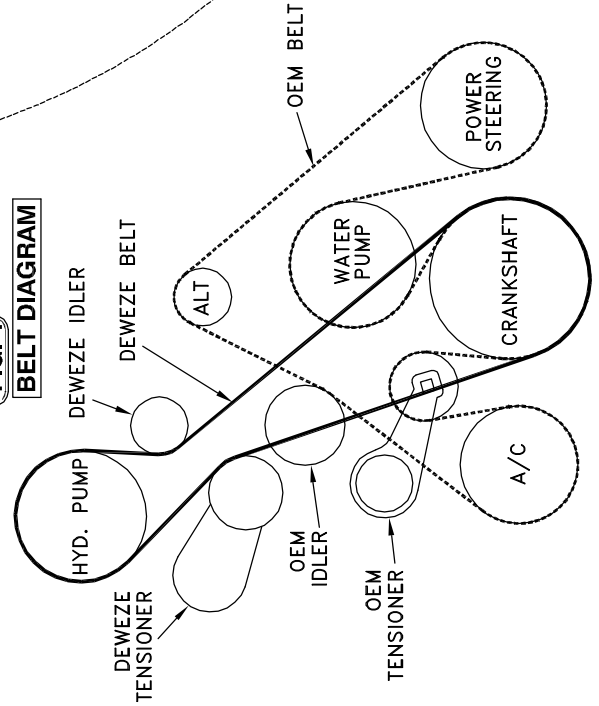


FIG. 4
BELT DIAGRAM

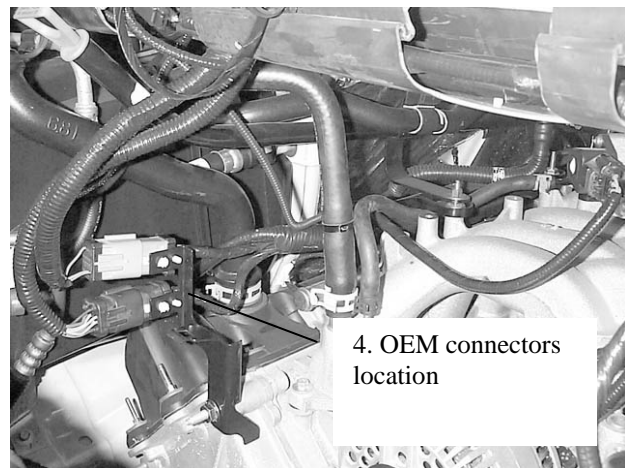


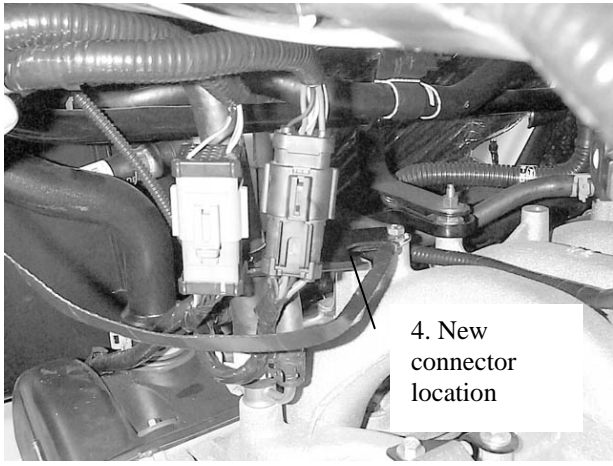
DewEze

Clutch Pump Kit
#700449
Ford 6.8L
Van with A/C
'A' mount
2006 +

INSTALLATION INSTRUCTIONS

1. Disconnect the battery.
2. Remove the OEM belt. Remove the fan shroud and fan.
3. Remove the air cleaner housing.
4. On 2009 and later trucks, remove the OEM bracket over the top of the alternator. Cut the bracket along the dotted line and discard the shaded portion as in Fig. 6. Reinstall this bracket. Place the bridge plate (22) on top of the alternator bracket (Location D) and over to where the removed portion of the OEM bracket was attached (Location E), using the OEM bolts. On the 2006-2008 trucks, only a small corner of the alternator bracket that contacts the pump bracket must be removed.
5. Pull the two wiring harness connectors from the mounting bracket. Remove the nut and bracket from the engine. Cut off the bracket and drill a new hole as shown in Fig. 2. Replace the two connectors back in the bracket. Turn the bracket so it is lying down, pointing to the rear and the connectors are standing up. Attach the bracket and ground strap to the intake manifold at Location I with the M6 x 16 bolt (18) as shown in Fig. 3.
6. Assemble the bracket as indicated in Fig. 5.
7. Bolt pump (7) onto pump plate (1) with two 3/8 x 1 1/4 bolts (17) and two 3/8 flat washers (18). Torque to 20 ft-lb. Attach coil (8a) with four 1/4 x 1/2 flange bolts supplied with clutch. Torque these to 6 ft-lb. Attach clutch pulley (8b) to pump shaft with 5/16NF x 1 1/4 bolt and heavy washer supplied with clutch. Torque to 14 ft-lb.
8. Install the fittings on the pump.
9. Attach the idler pulley (9) and bushing (4) to the front of the pump mount bracket (1) with the M10 x 60 bolt (15). Torque to 19-25 ft-lb.
10. Attach the tensioner (6) to the tensioner bracket (3) with the M12 x 75 bolt (16).
11. Attach the pump mount bracket (1) to the engine with the OEM stud bolt (13) at location A and the M10 x 60 bolt (12) at location B. Torque these bolts to 19-25 ft-lb.
12. Install serpentine pump drive belt (21) per Fig. 4.
13. Connect the battery.
14. Run the engine and check for any clearance or alignment problems. Adjust as needed.





4. New
connector
location