

Ford LCF / International CF600, 4.5L : D, 2005+, AA Pump, CCW (Reverse) Rotation, Rear Port

Bolt Packages:

Bracket	711734	(Inc. item 9-13)
Fan spacer	711735	(Inc. item 5, 14, 15)
Crank pulley	None	
Tensioner	None	

Bracket Assy.	711739	(Inc. items 1-4)
Issue Date	10-18-05	Revision Date NC 10-18-05

Item Part No. Description

1.	711730	Top alternator bracket	14.	110262	M10 x 1.5 x 75 Bolt
2.	711731	Front support bracket	15.	110676	3/8 Flat washer
3.	711737	Pump plate	16.	711740	Hose elbow
4.	711733	Idler bracket	17.	102029	Hose spllce
5.	711619	Idler bushing	18.	OEM	Tube, heater line
6.	740261	Idler	19.	520099	Hose clamp
7.	*	Pump (CCW, sideport)	20.	110271	3/8 Lock washer, .55 O.D. x .13 thick
8.	740183	Clutch	21.	740360	Belt, Poly Cog 1490K8
9.	110488	M10 x 1.5 x 45 Bolt			
10.	110183	M10 x 1.5 x 100 Bolt			
11.	110034	3/8-16 x 1 3/4 Bolt			
12.	110526	M10 x 1.5 x 40 Bolt			
13.	110465	3/8-16 x 1 1/4 Socket head bolt			

* See pump list for sizes and part numbers.

FIG. 1
BELT DIAGRAM

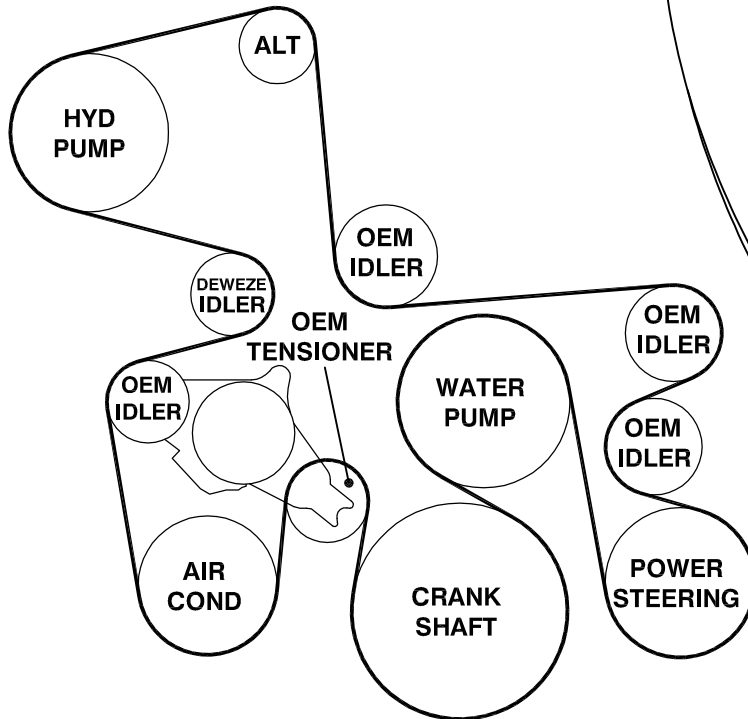
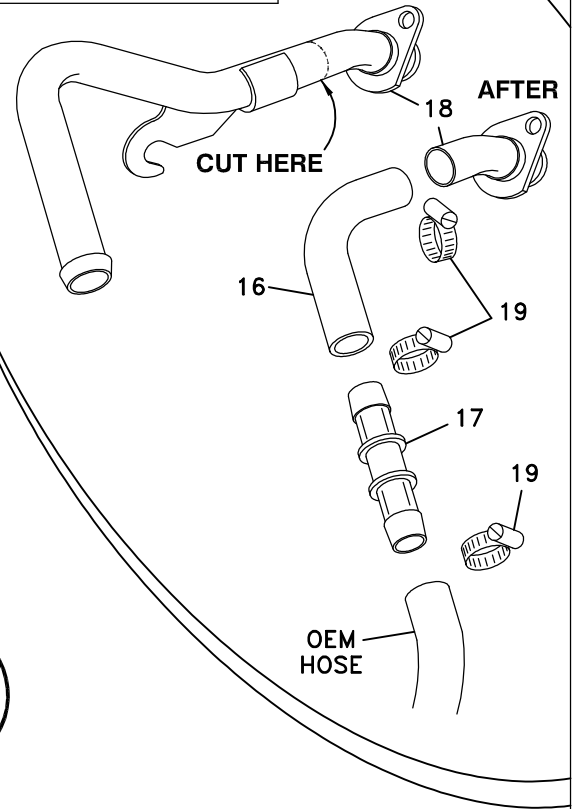


FIG. 2
HEATER LINE CUT OFF



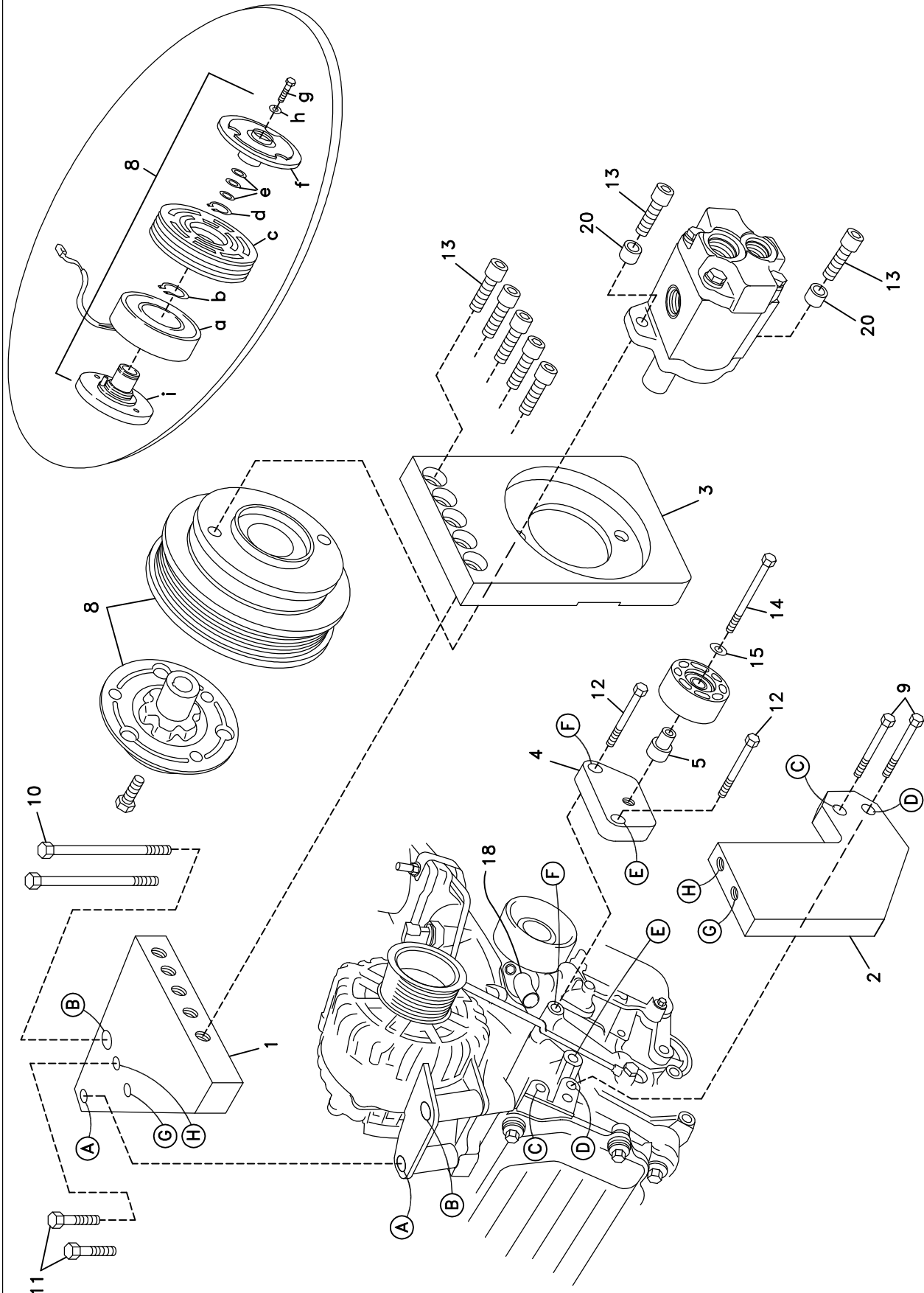


FIG. 3

DewEze

Clutch Pump Kit

#700448
Ford LCF/
Inter. CF600
'AA' mount
2006-

INSTALLATION INSTRUCTIONS

1. Disconnect the battery.
2. Drain the radiator down far enough to remove the metal heater tube (18) from front of engine.
3. Remove the intercooler tube. Remove the engine lift bracket.
4. Remove the support bracket for the coolant reservoir hoses.
5. Remove the OEM belt and lock the tensioner open.
6. Remove the metal heater tube (18). Cut it off midway between the bend and the mounting tab as shown in Fig. 2.
7. Mount the front support bracket (2) to the engine at Locations C and D with two M10 x 45 bolts (9). Mount the top bracket (1) to the alternator by replacing the OEM bolts with two M10 x 100 bolts (11). Attach the top bracket to the front bracket with two 3/8 x 1 3/4 bolts (11). Tighten all bolts.
8. Mount the idler bracket (4) to the front of the engine at Locations E and F with two M10 x 40 bolts (12). Push the idler bushing (5) into the back (the side without the snap ring) of the idler pulley (6). Insert the M10 x 75 bolt (14) through a 3/8 flat washer (15), through the idler pulley and bushing and into the threaded hole on the idler bracket.
9. Hold pump (7) onto front of pump plate (3) and clutch hub (8i) onto rear of bracket. Place two 3/8 x 1 1/4 socket head bolts (13) and 3/8 high collar lock washers (20) through pump, through mounting plate and thread into hub.
10. Slide coil (8a) over hub, aligning hole in the back plate of coil with the anti-rotation pin (J) in the hub. The wires from the coil should be on the same side as the pin (J). Install large snap ring (8b) to hold coil in place.
NOTE: THE BEVEL ON BOTH SNAP RINGS MUST FACE AWAY FROM THE PUMP. REFER TO INSTRUCTION SHEET FOR THE CLUTCH FOR CORRECT INSTALLATION OF SNAP RINGS.
11. Slide clutch pulley (8c) onto hub. Install small snap ring (8d) to hold pulley in place.
12. Place the key (5) onto the pump shaft. Slide the hub/armature (8f) onto the pump shaft aligning the keyways.
NOTE: SET THE AIR GAP BETWEEN THE HUB/ARMATURE AND THE PULLEY USING SHIMS (8e) ACCORDING TO INSTRUCTION SHEET FOR CLUTCH.
13. Thread bolt (8g) and lock washer (8h) into pump shaft. Torque to value in clutch instruction sheet.
14. Reinstall the OEM heater tube (18) that was cut off. Push the hose elbow (16) onto the heater tube, push the hose splice (17) into the elbow, and push the splice into the OEM heater hose that originally connected to the metal tube, securing with the hose clamps (19). Make sure the elbow is rotated so it doesn't contact any moving parts. See Fig. 2.

15. Install the belt (21) as shown in the belt diagram (Fig. 1).
16. Connect the battery.
17. Run the engine and check for any clearance or alignment problems. Adjust as needed.

