

Ford, 5.4L:G, 2005+, F-350, w/Spider Kit, A Pump, 12, 17 GPM, Rear Port

Bolt Packages:

Bracket	711652	(Inc. item 9, 15)
Idler pulley	711653	(Inc. items 10, 15)
Pulley	None	
Tensioner	711654	(Inc. items 4, 12, 17, 18)

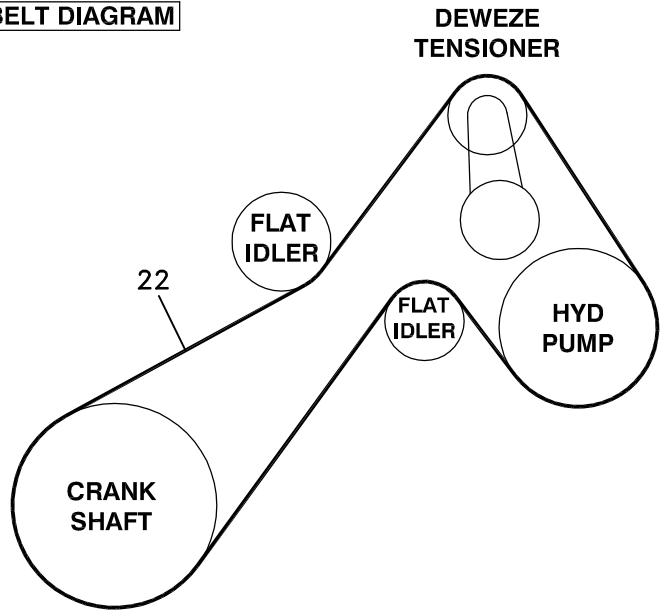
Tensioner Assy.	740388	(Inc. item 4, 6, 16-18)
Issue Date	12-10-04	Revision Date B 12-9-05

Item Part No. Description

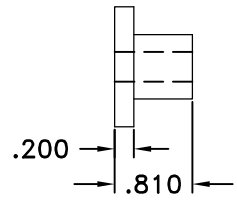
1.	711646	Engine bracket	13.	OEM	Bolt
2.	-----	-----	14.	711649	Air intake support bracket
3.	110780	Washer, M8 x .188"	15.	110676	3/8 Flat washer
4.	711648	Idler bushing, .200"	16.	740143	Idler pulley, 8-groove
5.	740261	Idler pulley, flat 3.00"	17.	110559	M8 x 1.25 x 40 Bolt
6.	740387	Tensioner arm	18.	110204	Shim, idler
7.	*	Pump, A rear port	19.	740276	Spider drive
8.	742009	Clutch	20.	110122	5/16-18 x 1.25 Wiz bolt
9.	110292	M8 x 1.25 x 120 Bolt	21.	110606	5/16-18 Wiz nut
10.	110282	M10 x 1.5 x 20 Bolt	22.	740280	Belt, Micro-V K080716
11.	110425	3/8-16 x 1 1/4 Bolt			
12.	110747	M12 x 1.75 x 75 Bolt			

* See pump list for sizes and part numbers.

FIG. 1
BELT DIAGRAM

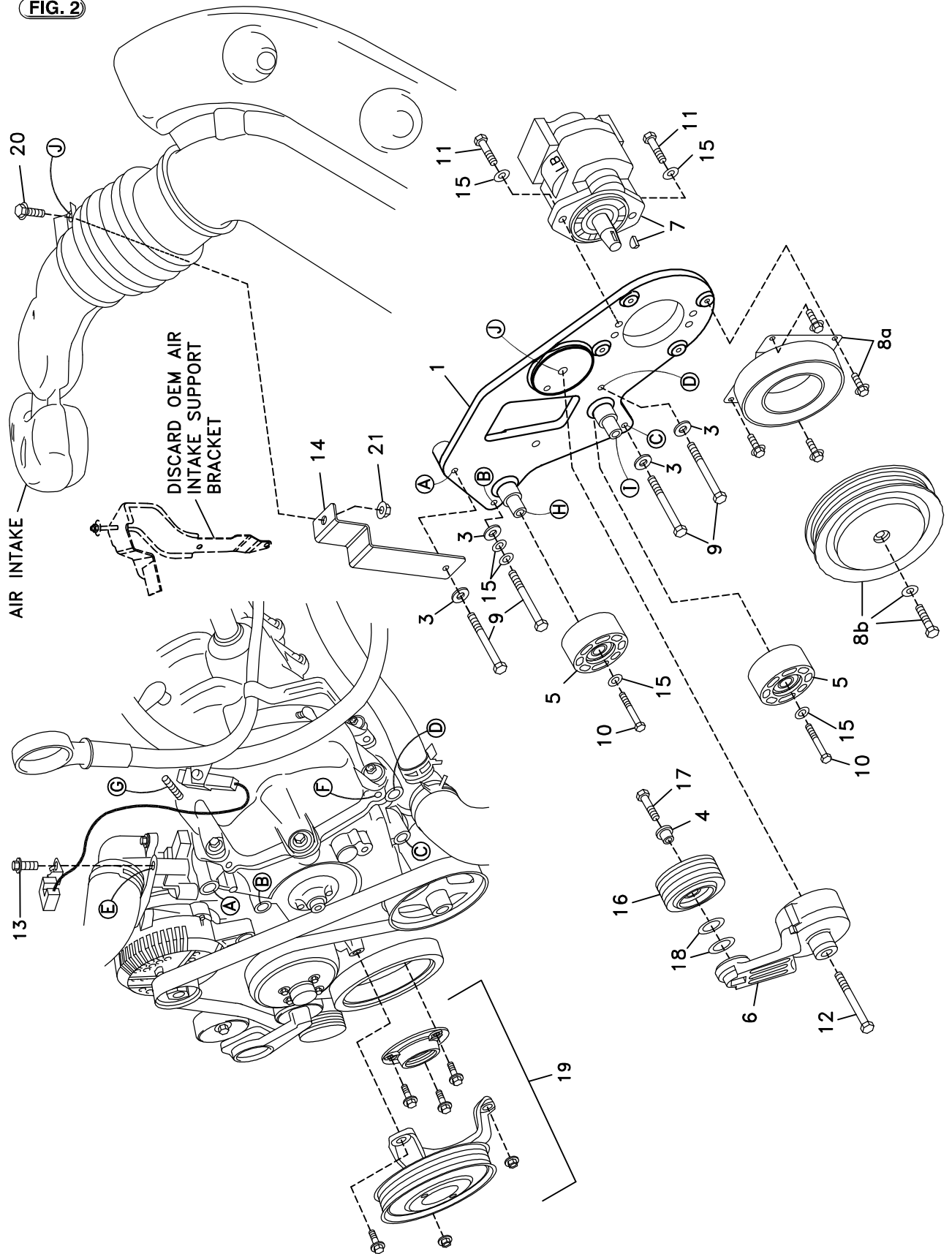


IDENTIFY IDLER BUSHINGS



ITEM 4

FIG. 2



DewEze

Clutch Pump Kit

Clutch Pump Kit
700436
Ford 5.4
Spider drive
2005+

INSTALLATION INSTRUCTIONS

1. Disconnect the battery.
2. Remove the air cleaner assembly and the OEM air intake support bracket (Fig. 2).
3. Drain the radiator. Remove the top radiator hose.
4. Remove the fan and shroud.
5. Remove the three OEM stud bolts from Locations A, C, and D. Remove one OEM bolt from Location B.
6. Remove the OEM bolt (13) from the front of the thermostat housing (Location E), place the OEM electrical wire as shown there and fasten with the OEM bolt.
7. Remove the wiring harness from the attachment points on the valve cover at the front corner (Location F) and the stud bolt under the air tube (Location G). Push the wiring harness back on top of the valve cover to clear the pump and bracket.
8. Install the spider drive (19). Replace the OEM water pump with the new water pump with extended hub, using the original water pump pulley over. Refer to the separate sheets for these procedures.
9. Attach the pump (7) to the back of the pump plate (1) using two 3/8 x 1 1/4 bolts (11) and two 3/8 flat washers (15).
10. Attach the clutch coil (8a) to the front of the pump plate using the four 1/4 x 1/2 flange bolts provided with the clutch. Attach the clutch pulley (8b) to the pump shaft using the 5/16 x 1 1/4 bolt and heavy flat washer provided with the clutch.
11. Place the two 1" O.D. x .668" I.D. shims (18) on the boss on the tensioner arm (6). Place the 8-groove idler pulley (16) on that boss. Insert the idler bushing (4, .200" flange) into the center of the idler. Hold it on with the M8 x 40 bolt (17). Place the tensioner spacer (2) on the pump plate at Location J inserting the pin into the hole in the plate. Place the tensioner (6) on the spacer using the M12 x 75 bolt (12) placing the locating pin in the hole in the spacer.
12. Attach the pump plate to the engine at Locations A, B, C, and D using four M8 x 120 bolts (9) with one .188" thick washer (3) on each bolt and two standard 3/8" flat washers (15) on the bolt at Location B only. Hold the DewEze air intake support bracket (14) on top of the bracket on the hole at Location A as you bolt the pump bracket in place. Do not tighten this bolt until the air intake is reinstalled.
13. Attach one flat idler (5) to the plate with the M10 x 20 bolt (10) and 3/8 flat washer (15) at Location H. Attach the other flat idler (5) with an M10 x 20 bolt (10) and 3/8 flat washer (15) at Location I.
14. Install the new serpentine belt (22) as shown in Fig. 1.
15. Replace the fan and shroud.
16. Replace the radiator hose and the coolant.
17. Replace the air intake assembly. Line up the support bracket (14) with the mounting hole in the air intake at Location J. Attach the intake to the bracket with the 5/16 x 1 1/4 wiz bolt (20) and the 5/16 wiz nut (21). Tighten the M10 x 120 bolt at Location A.
18. Connect the battery.
19. Make sure all bolts are tight. Run the engine and check for any clearance or alignment problems. Adjust as needed.