

Bracket Assy.	None
Bolt Packages:	
Bracket	711192 (Inc. items 8, 9, 13, 14)
Pulley	None
Idler	711193 (Inc. items 4, 15)
Tensioner	None

Make	Ford	
Engine	7.3L	
Fuel	Diesel	
Year	1995 - 98	
Equipment	A/C, Turbo	
Revised	A	9-1-04

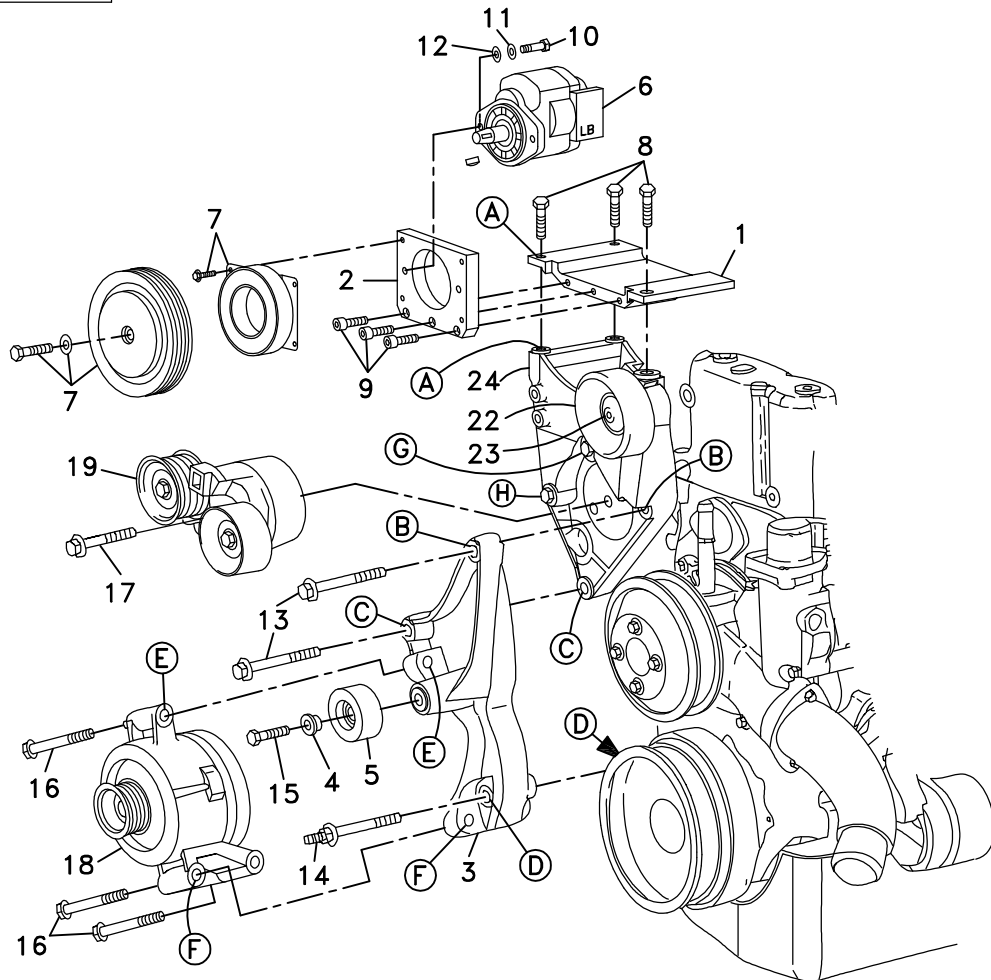
Item	Part No.	Description
------	----------	-------------

1.	711169	Base plate	14.	110232	M10 - M12 x 78 Stud bolt
2.	711190	Pump plate	15.	110526	M10 x 40 Bolt
3.	711194	Lower alternator brkt.	16.	OEM	Bolt
4.	711073	Idler bushing	17.	OEM	Bolt
5.	740249	Idler pulley 2.50" dia.	18.	OEM	Alternator
6.	*	Pump	19.	740308	Tensioner
7.	742009	Clutch	20.	732005	Jumper wire/4GA
8.	110479	M10 x 30 bolt	21.	740263	Belt/Poly Cog 1380K8BK
9.	110395	3/8 x 1 Socket head bolt	22.	740302	Idler pulley 3.00" dia.
10.	110425	3/8NC x 1 1/4 Bolt	23.	OEM	Bolt
11.	110672	3/8 Lock washer	24.	700234	Alternator bracket
12.	110676	3/8 Flat washer	25.	732006	Jumper wires/16GA
13.	110567	M10 x 80 Bolt			

* See master list for pump part no.

FIG. 1

COMPONENT PLACEMENT



(A),(B),(C)... Denotes bolt holes in engine to locate corresponding holes in Pump Brkt.

FIG. 2
BELT DIAGRAM

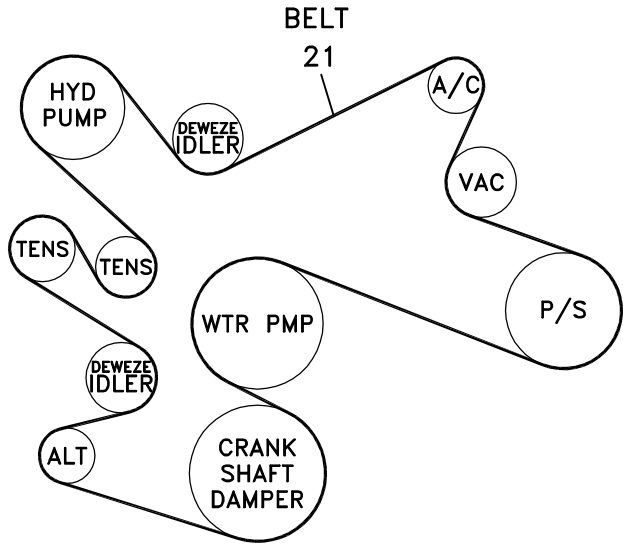
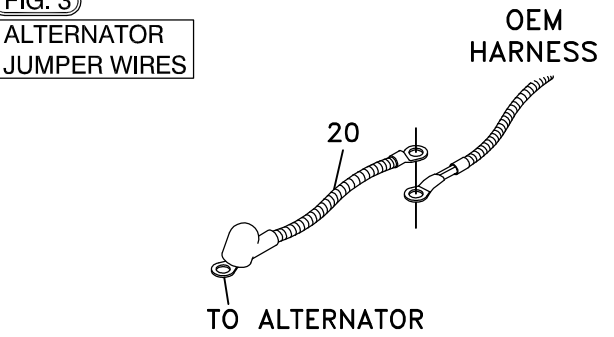


FIG. 3
ALTERNATOR JUMPER WIRES



CUT WIRES HERE
OEM ALTERNATOR PLUG

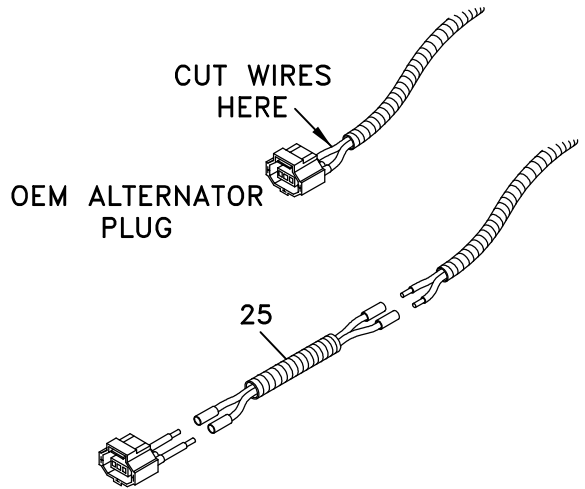
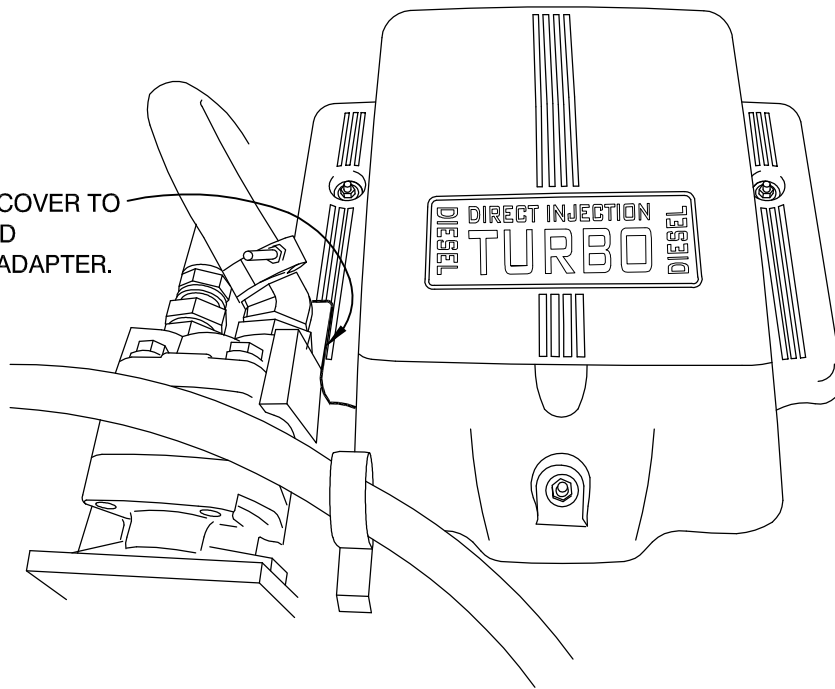


FIG. 4
PLASTIC ENGINE COVER

NOTCH ENGINE COVER TO CLEAR PUMP AND SUCTION HOSE ADAPTER.



DewEze

Clutch Pump Kit

Clutch Pump Kit
700424
Ford 7.3
Diesel
1995-98

INSTALLATION INSTRUCTIONS

1. Disconnect battery.
2. Remove the top plastic cover from the engine, shown in Fig. 4.
3. Remove OEM serpentine belt.
4. Disconnect wiring from alternator. Disconnect the ground wire from the lower engine block.
5. Remove alternator (18) from top OEM location by removing three bolts. Keep these bolts. Remove the OEM idler from the alternator bracket. Save the bolt. Remove the OEM tensioner. Remove the OEM alternator bracket and save the bolts.
6. Put the DewEze alternator bracket (24) in place using the OEM bolts at Locations G and H only. Do not tighten yet.
If your truck has the heavy duty alternator, place the alternator on the lower mounting bracket (3) before bolting it on the engine and check to make sure the alternator sets flat on the mounting surfaces and there is clearance between the alternator and the bracket. If there is any contact, grind away that part of the bracket so there is sufficient clearance. Tightening the bolts if it does not set flat could break the alternator case.
7. Refer to Fig. 3 for the following: Cut the alternator plug from the wiring harness. Using the butt connectors, connect the two 16GA jumper wires (25) to the wires from the harness where the plug was. Connect the alternator plug to the other end of the jumper wires using the butt connectors. Insert the plug into the alternator. Bolt the end of the 4GA wire (20) without the boot to the terminal that was originally connected to the alternator. This connection needs tape or heat shrink to protect it. Connect the other end of the 4GA wire to the alternator.
8. Mount the alternator (18) to the lower alternator bracket (3) using the OEM alternator bolts.
9. The fuel water drain will need to be moved to clear the alternator. Gently bend the fuel line until it is out of the way. Mount the alternator and lower alternator bracket to the original alternator bracket using two M10 x 80 bolts (13) at locations B and C, and the M10 - M12 x 78 stud bolt (14) at location D. Attach the ground wire to alternator bracket at Location C.
10. Insert idler bushing (4) into snap ring side of idler pulley (5). With the snap ring facing forward, attach idler to mounting boss on lower alternator bracket using M10 x 40 bolt (15).
11. Install the dual tensioner to its original location using the OEM bolt.
12. Attach the pump (6) to the back of the pump plate (2) using two 3/8 x 1 1/4 bolts (10), two 3/8 lock washers (11), and two 3/8 flat washers (12). The front of the pump plate is identified by the three countersunk holes at the bottom of the plate.
13. Mount the pump and pump plate assembly to the front of the base plate using three 3/8 x 1 socket head bolts (9).
14. Attach the clutch coil (7) to the front of the pump plate using the four flange bolts provided with the clutch. Attach the clutch pulley (7) to the pump shaft using the bolt and heavy flat washer provided with the clutch.
15. Mount the base plate on top of the OEM alternator bracket at Location A using three M10 x 30 bolts (8).
16. Install the new serpentine belt (21) as shown in Fig. 2.
17. The top plastic cover will need to be notched to clear the pump and suction hose. Hold the cover in place to see how much needs to be cut out. See Fig. 4.
18. Connect the battery.
19. Run the engine and check for any clearance or alignment problems. Adjust as needed.