

Bracket Assy.	711445	(Inc. items 1-3)
Bolt Packages:		
Bracket	711458	(Inc. items 10-12)
Pulley	None	
Idler, pump brkt.	711459	(Inc. items 5, 13, 16)
Idler, a/c brkt.	711460	(Inc. items 6, 14, 16)
Tensioner	None	

Make	Chevrolet 4500, 5500	
Engine	8.1L	
Fuel	Gas	
Year	2003-	
Equipment	A/C	
Revised	NC	10-1-02

Item	Part No.	Description
1.	711446	Air conditioner bracket
2.	711447	Vertical bracket
3.	711448	Power steering bracket
4.	710936	Pump plate
5.	711457	Idler bushing, 2.40"
6.	711009	Idler bushing, 1.12"
7.	711462	Spacer, .75" thick
8.	740261	Idler pulley
9.	110429	1/2-13 x 1 1/2 Bolt
10.	110465	3/8-16 x 1 1/4 Socket head bolt
11.	110183	M10 x 100 x 1.5 Bolt
12.	110274	M10 x 140 x 1.5 Bolt
13.	110113	M10 x 90 x 1.5 Bolt
14.	110488	M10 x 45 x 1.5 Bolt
15.	110425	3/8-16 x 1 1/4 Bolt
16.	110676	3/8 Flat washer
17.	*	Pump
18.	740144	Clutch
19.	OEM	A/C compressor
20.	740283	Belt, Poly Cog 6 rib

**FIG. 1**

**BELT DIAGRAM**

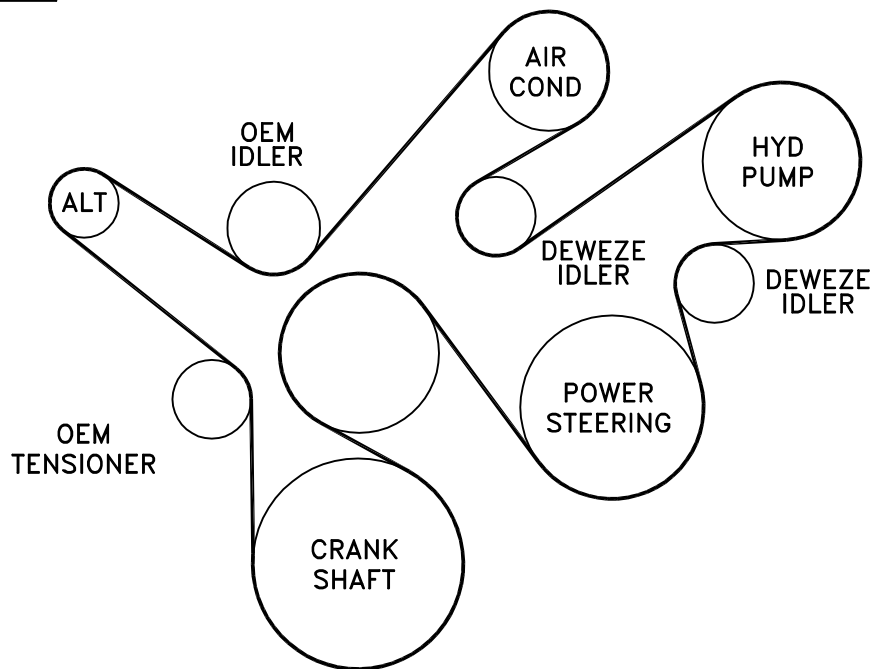
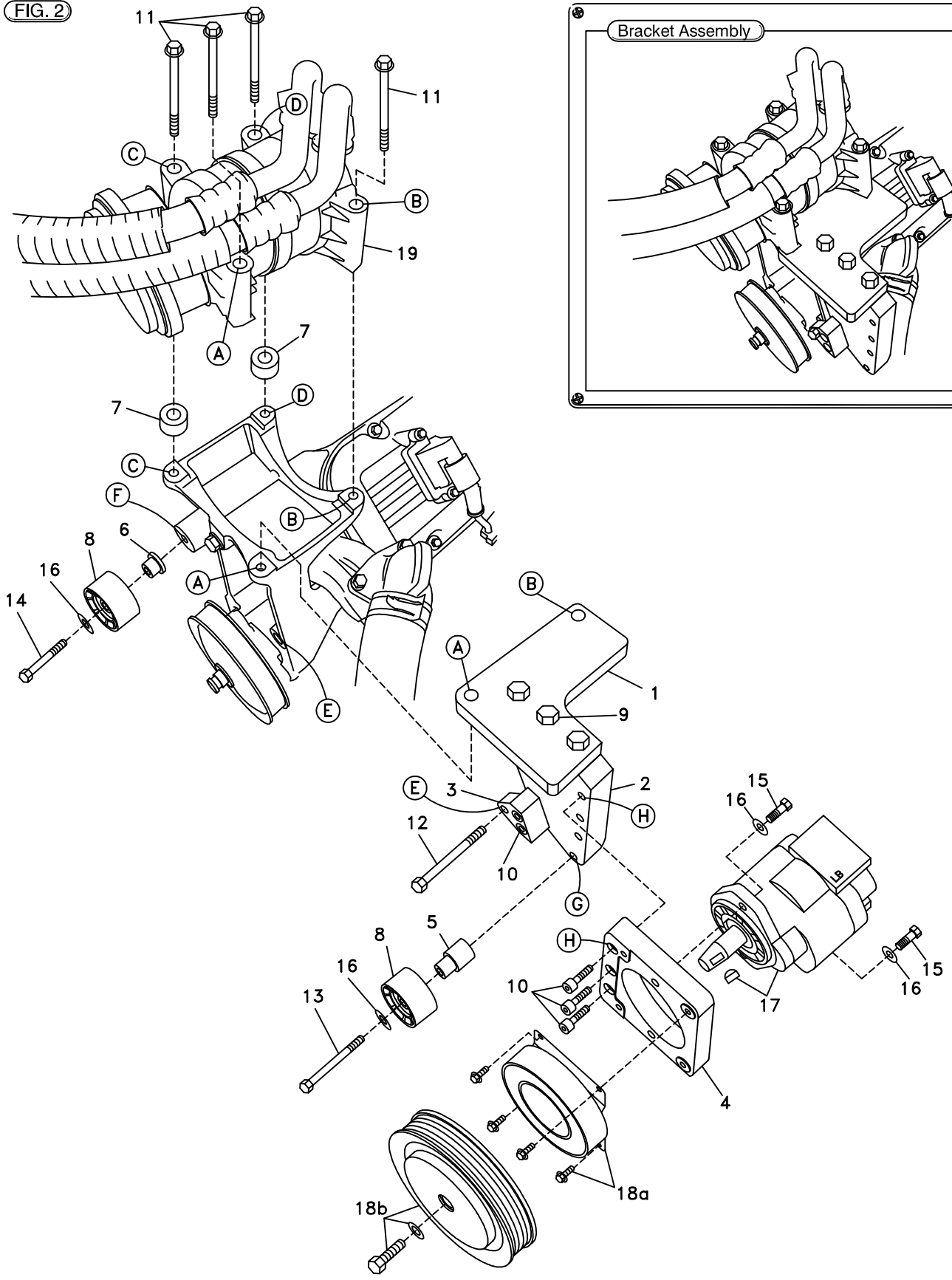


FIG. 2



# DewEze

## Clutch Pump Kit

Clutch Pump Kit  
700404  
Chevy 8.1L  
4500, 5500  
2003-

## INSTALLATION INSTRUCTIONS

---

1. Disconnect the battery.
2. Remove the air filter canister to get access to the air conditioner bolts.
3. Remove OEM belt.
4. Remove the OEM bolt from the lower air conditioner bracket at Location E. Remove the four OEM air conditioner compressor bolts. Lift the compressor up and set the .75" spacers (7) on the left side of the air conditioner mounting bracket at Location C and D. Set the compressor down on the spacers and thread two M10 x 100 bolts (11) through the compressor and the spacers and into the A/C mounting bracket. Just start the bolts in - do not tighten yet.
5. Place the top plate of the engine bracket (1) between the A/C bracket and the compressor at Locations A and B. Thread two M10 x 100 bolts (11) here. Tighten all four compressor bolts. Insert the M10 x 140 bolt (12) into the hole at Location E and tighten.
6. Mount the pump (17) to the back of the pump plate (4) with two 3/8 x 1 1/4 bolts (15) and two 3/8 flat washers (16). Attach the pump plate with the pump to the engine bracket with three 3/8 x 1 1/4 socket head bolts (10) at Location H. Attach the clutch coil (18a) to the pump plate with four 1/4 x 1/2 flange bolts. Attach the clutch pulley (18b) with the 5/16 x 1 1/4 bolt with heavy flat washer.
7. Insert the long idler bushing (5) into the back of one of the idler pulleys (8). Place a 3/8 flat washer (16) on the M10 x 90 bolt (13) and insert through the front of the idler threading it into the hole at Location G.
8. Insert the short idler bushing (6) into the back of the other idler pulley (8). Place a 3/8 flat washer (16) on the M10 x 45 bolt (14) and insert through the front of the idler threading it into the hole at Location F.
9. Install the belt (20) as shown in the diagram (Fig. 1).
10. Run the engine and check for any clearance or alignment problems. Adjust as needed.