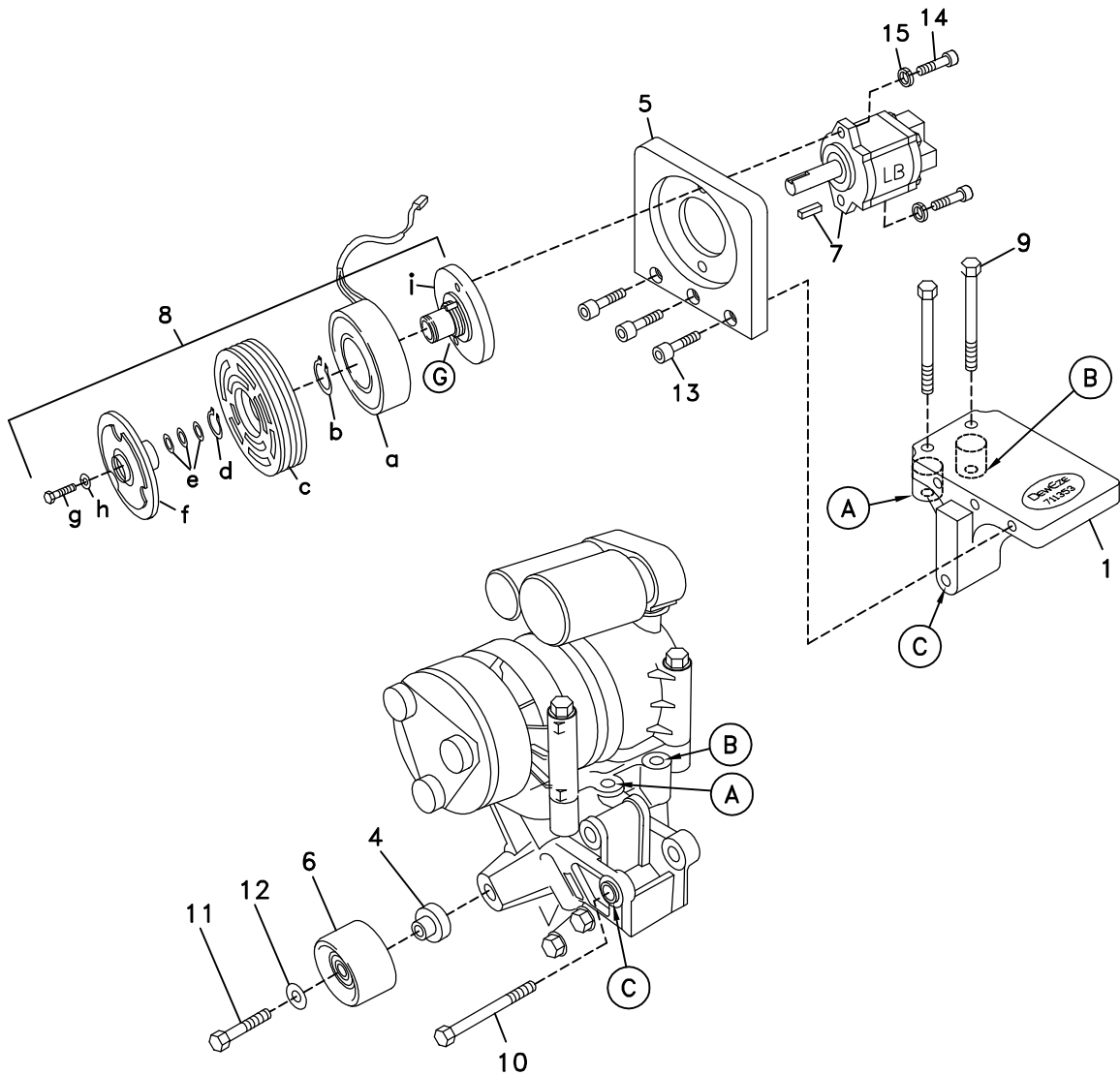


710099	Bracket Assy. (Inc. item 1)		Kit No.	700381
711339	Bracket Bolt Pkg. (Inc. items 9, 10, 13)		Make	Chevrolet/GMC
None	Pulley Bolt Pkg.		Engine	6.6L
711340	Idler Bolt Pkg. (Inc. 4, 11, 12)		Fuel	Diesel
			Year	2000-01
			Equipment	Turbo, A/C
			Revised	B 9-5-01

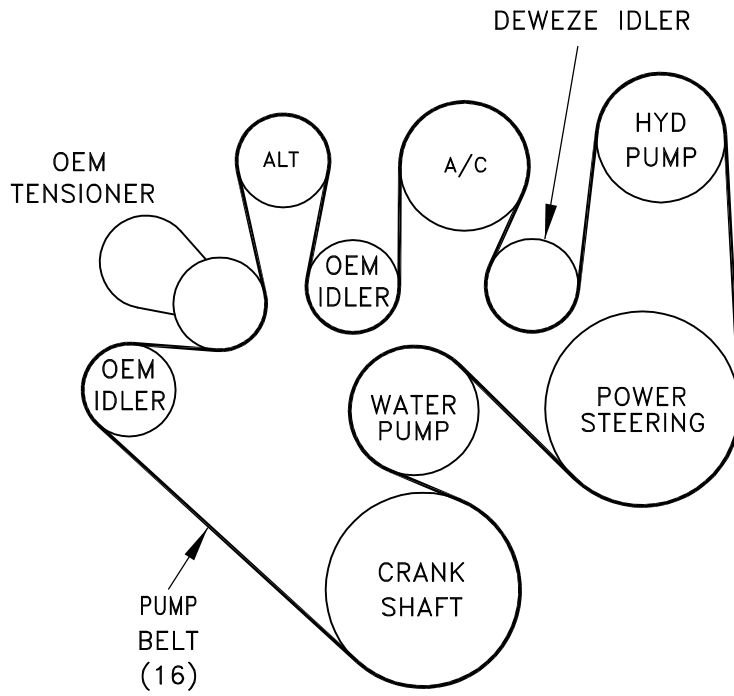
ITEM	PART #	DESCRIPTION				
1.	710099	Pump mount bracket	9.	110217	M10 x 70 x 1.5 Bolt	
2.	-----	-----	10.	110567	M10 x 80 x 1.5 Bolt	
3.	-----	-----	11.	110488	M10 x 45 x 1.5 Bolt	
4.	711338	Idler bushing	12.	110676	3/8 Flat washer	
5.	711291	Pump plate	13.	110395	3/8-16 x 1 Socket head bolt	
6.	740302	Idler pulley	14.	110465	3/8-16 x 1 1/4 Socket head bolt	
7.	*	Pump / Rear port	15.	110271	3/8 Lock washer, .55 O.D. x .13 thick	
8.	740162	Clutch	16.	740266	Belt/6 Rib	

FIG. 1



(A),(B),(C)... Denotes bolt holes in engine to locate corresponding holes in Pump Brkt.

FIG. 2
BELT DIAGRAM



DewEze

Clutch Pump Kit
#700381
CHEVROLET
6.6L
DURAMAX
'AA' mount
00-01

INSTALLATION INSTRUCTIONS

1. Disconnect the battery.
2. Bolt the pump plate (5) to the base plate (1) with three 3/8 x 1 1/4 socket head bolts (13). Torque to 20 ft-lb.
3. Insert the two M10 x 70 bolts (9) through the holes in the notched end of the base plate (1) and into the air conditioner mounting bracket at locations A and B. Torque to 25 ft-lb. Insert the M10 x 80 bolt (10) into the air conditioner bracket at location C and through the engine bracket (2) and thread into the rear of the air conditioner bracket. Torque to 25 ft-lb.
4. Push the idler bushing (4) into the back of the idler pulley (6). Insert the M10 x 45 bolt (11) through a 3/8 flat washer (15), through the idler pulley and bushing and thread into the boss on the air conditioner bracket below the compressor. Torque to 25 ft-lb.
5. Hold pump (7) onto back of mounting plate (5) and clutch hub (8i) onto front of mounting plate, making sure clutch wire and anti-rotation pin (G) on front of hub is on the top. Place two 3/8 x 1 1/4 socket head bolts (14), 3/8 lock washers (15) through pump, through mounting plate and thread into hub.
6. Slide coil (8a) over hub, aligning hole in the back plate of coil with the anti-rotation pin (G) in the hub. The wires from the coil should be on the same side as the pin (G). Install large snap ring (8b) to hold coil in place.
NOTE: THE BEVEL ON BOTH SNAP RINGS MUST FACE AWAY FROM THE PUMP. REFER TO INSTRUCTION SHEET FOR THE CLUTCH FOR CORRECT INSTALLATION OF SNAP RINGS.
7. Slide clutch pulley (8c) onto hub. Install small snap ring (8d) to hold pulley in place.
8. Place the key (7) onto the pump shaft. Slide the hub/armature (8f) onto the pump shaft aligning the keyways.
NOTE: SET THE AIR GAP BETWEEN THE HUB/ARMATURE AND THE PULLEY USING SHIMS (8e) ACCORDING TO INSTRUCTION SHEET FOR CLUTCH.
9. Thread bolt (8g) and lock washer (8h) into pump shaft. Torque to value in clutch instruction sheet.
10. Install the belt (16) as shown in the belt diagram (Fig. 2). Visually sight along the edge of the belt to be sure the clutch pulley is in line with the other pulleys.
11. Connect the battery.
12. Run the engine and check for any clearance or alignment problems.