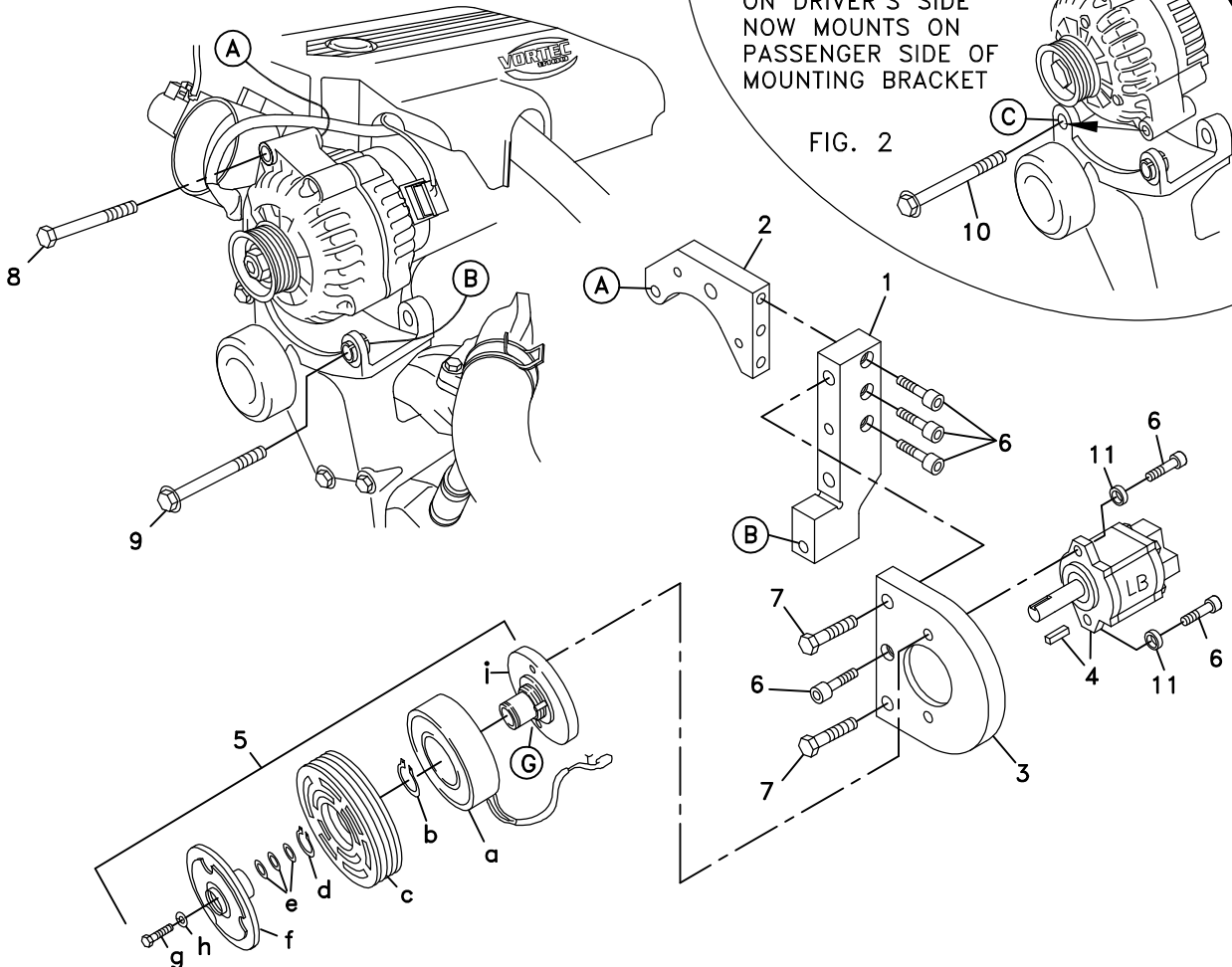


711346	Bracket Assy. (Inc. items 1, 2, 3)		Kit No.	<b>700377</b>
711350	Bracket Bolt Pkg. (Inc. items 6, 7, 8)		Make	Chevrolet/GMC
None	Pulley Bolt Pkg.		Engine	8.1L
None	Idler Bolt Pkg.		Fuel	Gas
None	Fan Spacer Bolt Pkg.		Year	2001
			Equipment	2 Engine belts
			Revised	A 8-28-01

ITEM	PART #	DESCRIPTION
1.	711347	Engine bracket
2.	711348	Alternator bracket
3.	711349	Pump plate
4.	*	Pump
5.	740162	Clutch
6.	110465	3/8-16 x 1 1/4 Socket head bolt
7.	110429	1/2-13 x 1 1/2 Bolt
8.	110217	M10 x 70 x 1.5 Bolt
9.	OEM	Bolt
10.	OEM	Bolt
11.	110271	3/8 High collar lock washer
12.	740207	Belt/K061058

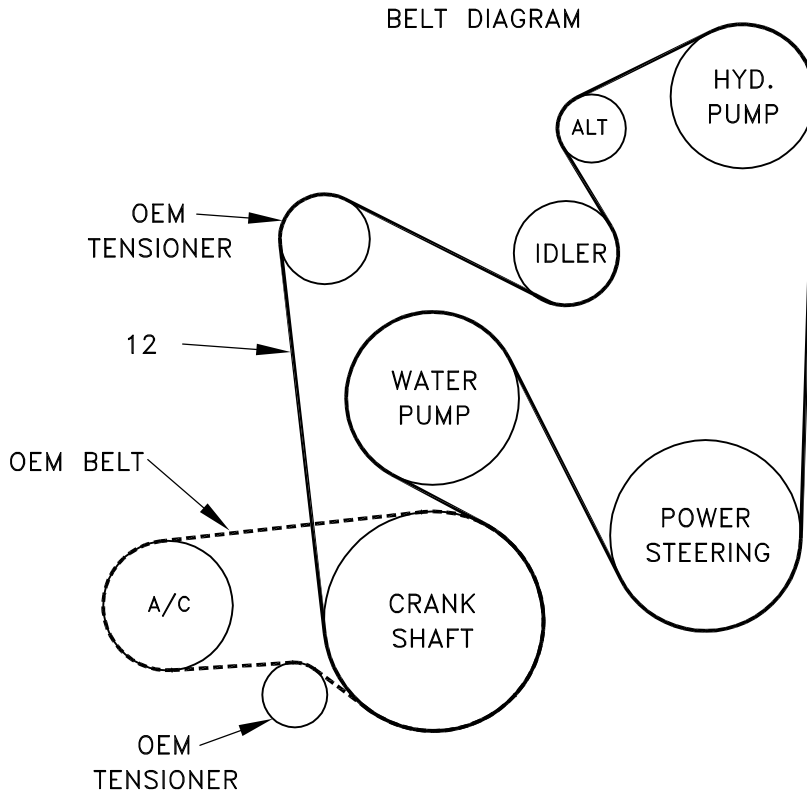
\* See master list for pump part no.

FIG. 1



(A)(B)(C)... Denotes bolt holes in engine to locate corresponding holes in Pump Brkt.

FIG. 3



# DewEze

Clutch Pump Kit  
#700377  
Chevy 8.1L  
with A/C  
2 - Belt  
'AA' mount  
2001-

## INSTALLATION INSTRUCTIONS

1. Disconnect the battery.
2. Unbolt the alternator. Rotate it clockwise so the alternator lug that was on the driver's side of the mounting bracket is now on the passenger side of the mounting bracket. See Fig. 2. Thread the OEM bolt (10) that was originally in that hole back into the same location to mount the alternator. Do not tighten it yet.
3. Attach the DewEze alternator bracket (2) to the engine bracket (1) with three 3/8 x 1 1/4 socket head bolts (6). Attach the pump plate (3) to the engine bracket with two 1/2 x 1 1/2 bolts (7) and one 3/8 x 1 1/4 socket bolt (6).
4. Hold pump (4) onto back of pump plate (3) and clutch hub (5i) onto front of bracket, making sure anti-rotation pin (I) on front of hub is on top. Place two 3/8 x 1 1/4 socket head bolts (6) and 3/8 high collar lock washers (11) through pump, through mounting plate and thread into hub. Torque to 20 ft-lb.
5. Slide coil (5a) over hub, aligning hole in the back plate of coil with the anti-rotation pin (G) in the hub. The wires from the coil should be on the same side as the pin (I). Install large snap ring (5b) to hold coil in place.  
**NOTE: THE BEVEL ON BOTH SNAP RINGS MUST FACE AWAY FROM THE PUMP. REFER TO INSTRUCTION SHEET FOR THE CLUTCH FOR CORRECT INSTALLATION OF SNAP RINGS.**
6. Slide clutch pulley (5c) onto hub. Install small snap ring (5d) to hold pulley in place.
7. Place the key (4) onto the pump shaft. Slide the hub/armature (5f) onto the pump shaft aligning the keyways.  
**NOTE: SET THE AIR GAP BETWEEN THE HUB/ARMATURE AND THE PULLEY USING SHIMS (5e) ACCORDING TO INSTRUCTION SHEET FOR CLUTCH.**
8. Thread bolt (5g) and lock washer (5h) into pump shaft. Torque to value in clutch instruction sheet.
9. Insert the lower bracket between the lugs on the alternator bracket at location B with the OEM bolt (9) taken from this location. Insert the M10 x 70 bolt (8) into the top hole in the alternator and thread into the DewEze bracket at location A. Tighten these bolts and the OEM bolt at location C.
10. Install the belt (13).
11. Connect the battery.
12. Run the engine and check for any clearance or alignment problems. Adjust as needed.