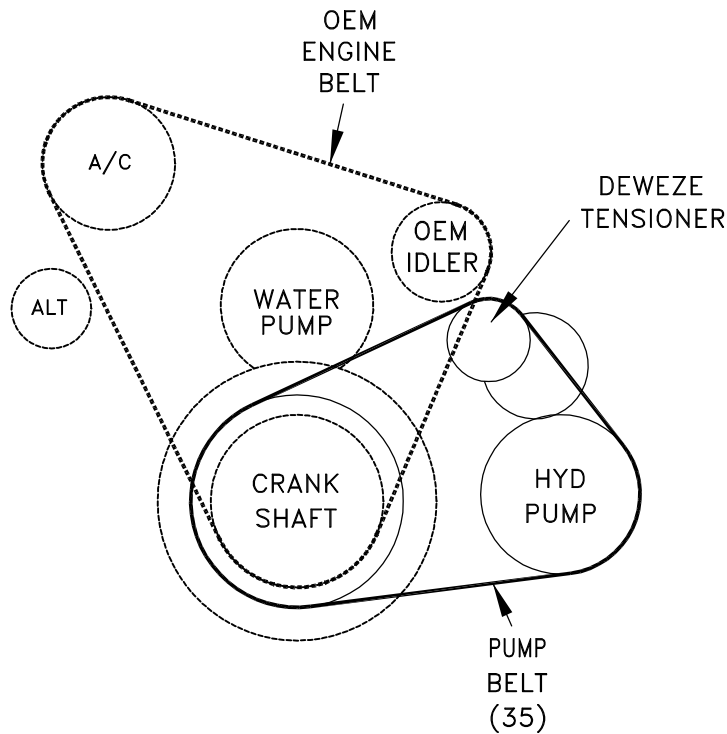


| | | | | |
|--------|---|--|-----------|------------------|
| 711316 | Bracket Assy. (Inc. item 1) | | Kit No. | 700366 |
| 711318 | Bracket Bolt Pkg. (Inc. items 11-13, 17) | | Make | Mitsubishi FH211 |
| 711319 | Pulley Bolt Pkg. (Inc. item 20) | | Engine | 5.86L |
| None | Idler Bolt Pkg. | | Fuel | Diesel |
| 740329 | Tensioner Assy. (Inc. items 6, 7, 15, 16) | | Year | 2000- |
| | Fan Spacer Bolt Pkg. | | Equipment | Turbo, A/C |
| | | | Revised | NC 8-1-00 |

| ITEM | PART # | DESCRIPTION |
|------|--------|------------------------------|
| 1. | 711316 | Engine bracket |
| 2. | 710936 | Pump plate |
| 3. | 700238 | Hub/crank pulley |
| 4. | 740327 | Crank pulley |
| 5. | 711317 | Fan shroud support |
| 6. | 740289 | Tensioner |
| 7. | 740233 | Idler pulley/serpentine |
| 8. | * | Pump/rear port |
| 9. | 740144 | Clutch |
| 10. | OEM | Idler pulley/AC |
| 11. | 110479 | M10 x 30 x 1.5 Bolt |
| 12. | 110488 | M10 x 45 x 1.5 Bolt |
| 13. | 110210 | M10 x 50 x 1.5 Bolt |
| 14. | 110250 | 3/8-16 x 2 1/2 Skt head bolt |
| 15. | 110248 | 7/16-14 x 1 3/8 LH Bolt |
| 16. | 110252 | Large cupped washer |
| 17. | 110395 | 3/8-16 x 1 Skt head bolt |
| 18. | 110425 | 3/8-16 x 1 1/4 Bolt |
| 19. | 110676 | 3/8 Flat washer |
| 20. | 110263 | M10 x 70 x 1.5 Stud bolt |
| 21. | OEM | Tensioner adjusting bolt |
| 22. | OEM | Lock washer |
| 23. | OEM | Flat washer |
| 24. | OEM | Hub/idler |
| 25. | OEM | Nut |
| 26. | OEM | Bolt |
| 27. | OEM | Bolt |
| 28. | 110265 | M10 x 1.5 Flange nut |
| 29. | OEM | Fan |
| 30. | 740328 | Belt/Micro-V K060427 |

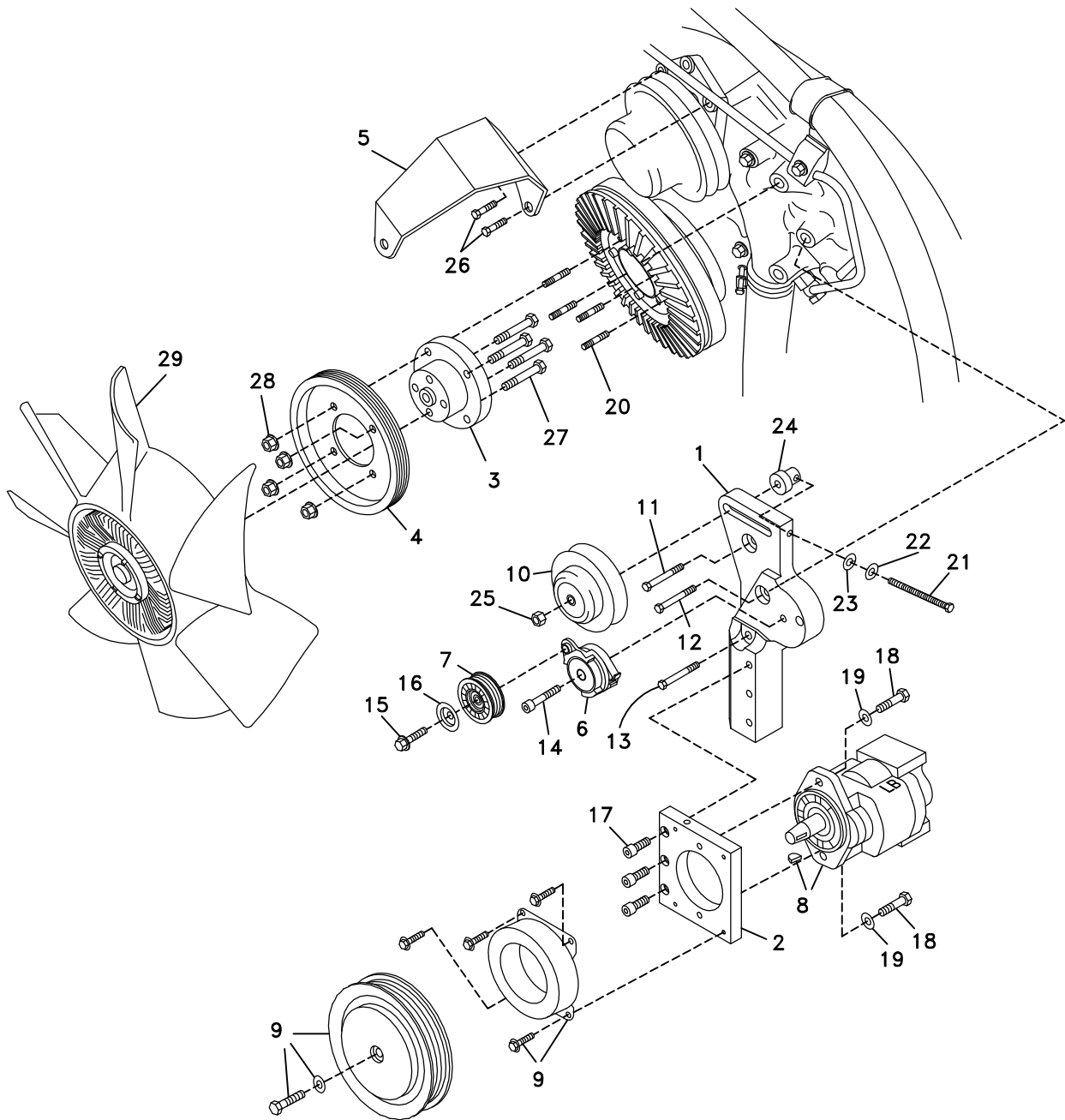
FIG. 1



(A)(B)(C)... Denotes bolt holes in engine to locate corresponding holes in Pump Brkt.

FIG. 2

BELT DIAGRAM



DewEze

Clutch Pump Kit
#700366
Mitsubishi
5.86L
Turbo diesel
'A' mount
2000-

INSTALLATION INSTRUCTIONS

1. Disconnect the battery.
2. Drain enough coolant from the radiator to remove the upper radiator hose.
3. Remove the OEM top fan shroud support bracket (5). Remove the remaining fan shroud attachment bolts.
4. Unbolt the fan and hub from the damper by loosening four nuts. Lift out the hub, fan and fan shroud together. Remove the hub from the fan by unthreading the four bolts (27).
5. Slip the crankshaft pulley (4) over the new DewEze hub (3). Attach the hub with the loose pulley to the fan with the OEM bolts (27).
6. Remove the OEM stud bolts from the damper. Replace with the DewEze M10 x 70 stud bolts (20).
7. Loosen the air conditioner tensioner adjusting bolt (21). Remove the OEM tensioner bracket from the engine. Disassemble the individual pieces from the tensioner.
8. Reassemble the A/C tensioner parts in the DewEze engine bracket (1): Hold the idler hub in the cavity in the rear, lining up the flat spots on the shoulder so they fit in the slot. Place the lock washer (22) and the flat washer (23) on the long adjusting bolt (21), insert through the hole in the edge of the bracket at location E, and thread into the idler hub. Insert the nut (25) into the center of the idler (10) and thread onto the hub and tighten.
9. Drop the hub, fan and fan shroud down into position together. Slide the hub over the stud bolts and tighten with the four M10 flange nuts (28). Attach the DewEze top shroud support (5) into place with the two OEM bolts (26). Attach the shroud to the remaining supports with the OEM bolts.
10. Bolt the pump plate (2) to the engine bracket (1) with the three 3/8 x 1 socket head bolts (17) at location D. Bolt the pump to the back of the pump plate with two 3/8 x 1 1/4 bolts (18) with two 3/8 flat washers (19). Screw the fittings into the pump.
11. Bolt the engine bracket with pump onto the engine at location A with the M10 x 30 bolt (11). Thread the M10 x 45 (12) bolt into location B. Thread the M10 x 50 bolt (13) into location C.
12. Attach the idler pulley (7) onto the tensioner (6) with the 7/16 x 1 3/8 left hand flange head bolt (15) with the large cupped washer (16). Install the tensioner on the engine at location F with the 3/8 x 2 1/2 socket head bolt (14).
13. Replace the OEM air conditioner belt and tighten with the tensioner.
14. Install the pump drive belt (31).
15. Replace the coolant back in the radiator.
16. Connect the battery.
17. Run the engine and check for any clearance or alignment problems. Adjust as needed.