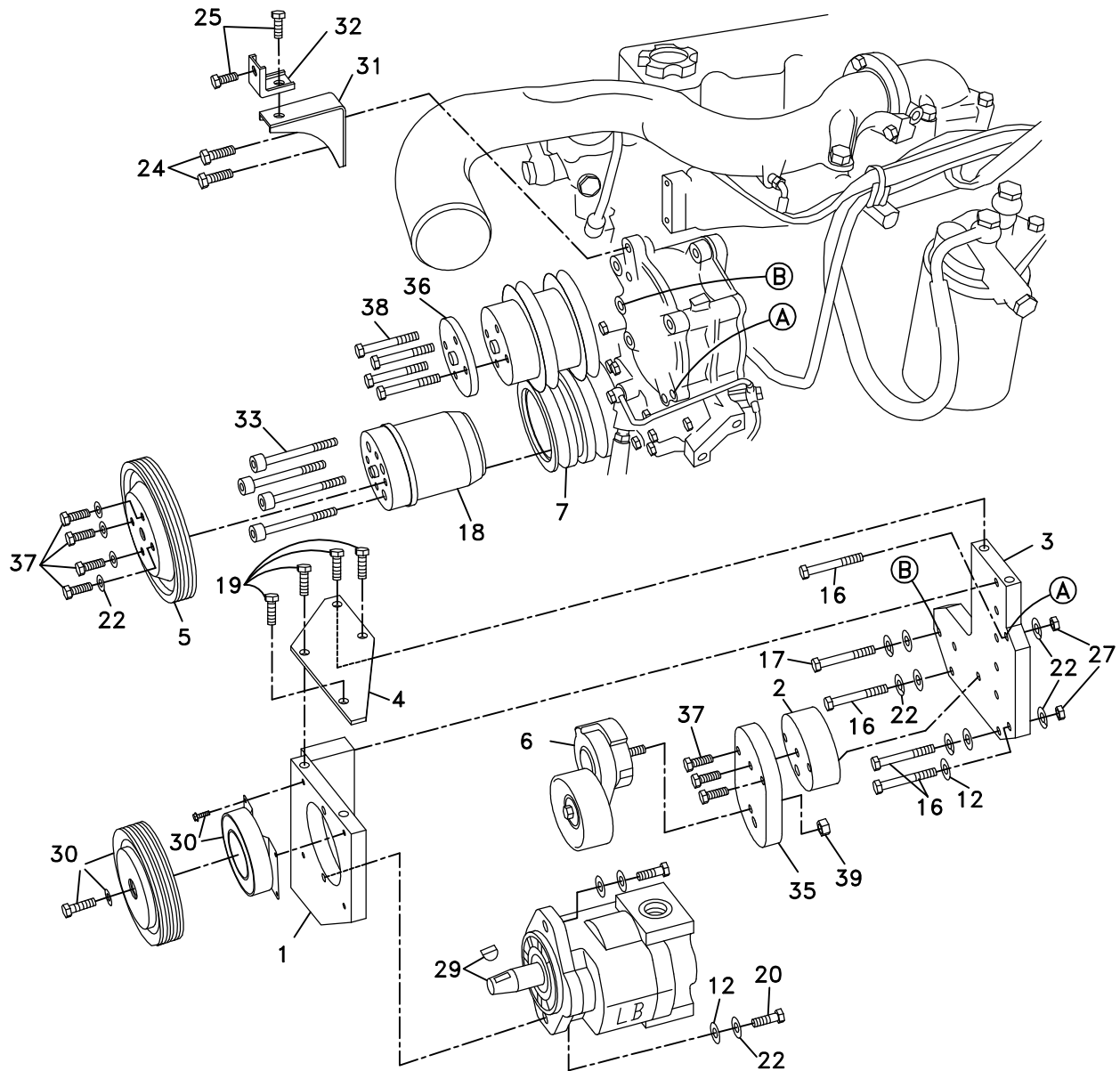


711279	Bracket Assy. (Inc. items 1-4, 35)	Kit No.	700363
711288	Bracket Bolt Pkg. (Inc. items 12, 15-17, 19, 37, 39)	Make	UD
711290	Pulley Bolt Pkg. (Inc. item 22, 33, 37)	Engine	Nissan
None	Idler Bolt Pkg.	Fuel	Diesel
711687	Fan Spacer Bolt Pkg. (Inc. item 38)	Year	1999+
		Equipment	A/C, Turbo
		Revised	B 5-19-05

ITEM	PART #	DESCRIPTION						
1.	711280	Pump mount bracket	18.	740378	Crank pulley adapter	35.	711686	Tensioner adapter plate
2.	711283	Tensioner block	19.	110433	3/8-16 x 3/4 Bolt	36.	700276	Fan spacer
3.	711286	Engine bracket	20.	110425	3/8-16 x 1 1/4 Bolt	37.	110420	3/8-16 x 1 Bolt
4.	711287	Gusset	21.	-----	-----	38.	110558	M8 x 1.25 x 50 Bolt
5.	740306	Pump drive pulley	22.	110676	3/8 Lock washer	39.	110101	M10 x 1.5 Lock nut
6.	743008	Tensioner	23.	OEM	Bolt			
7.	740392	OEM crank pulley, machined	24.	OEM	Bolt			
8.	-----	-----	25.	OEM	Bolt			
9.	-----	-----	26.	-----	-----			
10.	-----	-----	27.	OEM	Nut			
11.	-----	-----	28.	-----	-----			
12.	-----	-----	29.	*	Pump			
13.	-----	-----	30.	740144	Clutch			
14.	-----	-----	31.	OEM	Support/Intercooler tube			
15.	110395	3/8-16 x 1 Socket head bolt	32.	OEM	L bracket			
16.	110487	M10 x 120 x 1.5 Bolt	33.	110776	3/8-16 x 5 1/2 Socket head bolt			
17.	110184	M10 x 110 x 1.5 Bolt	34.	740268	Belt, Poly Cog 5060620			

* See master list for pump part no.



(A)(B)(C)... Denotes bolt holes in engine to locate corresponding holes in Pump Brkt.

FIG. 2
MOVE INTERCOOLER TUBE
OUT OF THE WAY

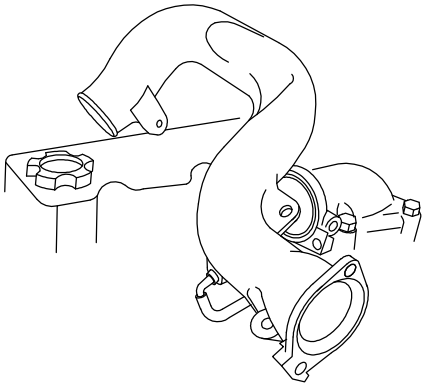


FIG. 3
REAR VIEW OF PUMP BRACKET ASSY.

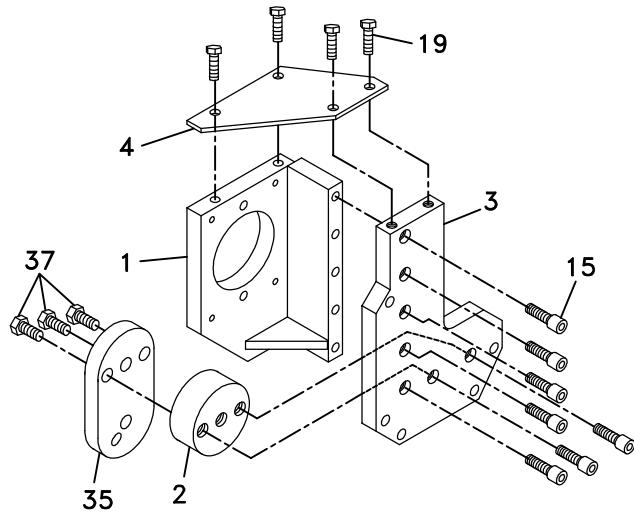
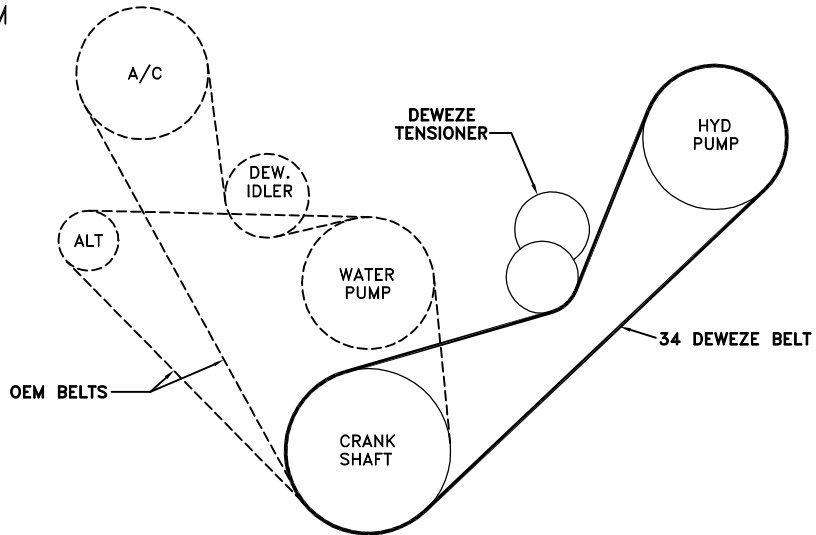


FIG. 4
BELT DIAGRAM



Clutch Pump Kit

#700363

U D

Nissan 4.5L

w/ and w/o A/C

'A' mount

1999-

DewEze

INSTALLATION INSTRUCTIONS

1. Disconnect the battery.
2. Remove the intercooler tube support bracket (31) and the L bracket (32). Unbolt the cast intercooler tube and lay it on top of the engine to get it out of the way (Fig. 2).
3. Loosen the belts by loosening the A/C tensioner and pivoting the alternator.
4. Remove the factory crank pulley. Install the DewEze crank pulley (7) using the OEM nut torqued to 400 ft-lb.
5. Using a marker make marks on the fan just outside where the mounting bolts are. This will aid you in getting the bolts in the holes when reassembling as you can't see the holes. Unbolt the fan from the clutch and lay it inside the shroud against the radiator. Unbolt the clutch from the water pump. Remove the stud bolts in the water pump.
6. Place the fan spacer (36) on the front of the fan pulley. Bolt the fan clutch back on. Bolt the fan onto the clutch placing bolts adjacent to the marks you made on the fan.
7. Insert an M10 x 120 bolt (16) into hole A in the engine bracket (3). Hold the pump bracket (1) onto the front of the engine bracket. Thread five 3/8 x 1 socket head bolts (15) through the five vertical counterbored holes in the back of the engine bracket and into the pump bracket. Hold the round tensioner mount block (2) onto the front of the engine bracket with the untapped hole at the bottom and thread two 3/8 x 1 socket head bolts (15) into the two remaining counterbored holes and into the tensioner block. Attach the tensioner adapter plate (35) to the round tensioner block (2) with three 3/8 x 1 bolts (37).
8. Mount the tensioner (6) onto the adapter plate placing the alignment pin on the back of the tensioner into the slot at the bottom of the plate. Thread the M10 lock nut (39) onto the tensioner stud and tighten.
9. Attach the pump (29) to the back of the pump plate with two 3/8 x 1 1/4 bolts (20), two 3/8 lock washers (22), and two 3/8 flat washers (12).
10. Install the pump and pump bracket on the engine by inserting the M10 x 120 bolt already in the bracket into hole A. Place a 3/8 lock washer (22) and an OEM nut (27) on the bolt. Insert the M10 x 110 bolt (17) with a 3/8 lock washer (22) and a 3/8 flat washer (12) into hole B in the bracket and into hole B in the engine. Place an M10 x 120 bolt (16) with a 3/8 flat washer into hole C in the bracket and through the engine. Place a 3/8 lock washer and an OEM (27) nut on the bolt. Thread two M10 x 120 bolts (16) with 3/8 lock washers and 3/8 flat washers into the two remaining mounting holes in the bracket.
11. Align the gusset (4) over the top of the bracket and bolt down with four 3/8 x 3/4 bolts (19).
12. Attach the clutch coil (30) to the front of the bracket using four flange bolts supplied with the clutch. Mount the clutch pulley (30) onto the pump shaft using the bolt and washer supplied with the clutch.
13. Place the OEM belts back on their pulleys and tighten the alternator and the A/C tensioner. These belts should be checked regularly. The V-belts drive the serpentine pulley. If the V-belts slip the pump may not run.
14. Install the pump drive belt (34) making sure pulleys are aligned and the belt runs true.
15. Reconnect the battery.
16. Run the engine and check for alignment problems.