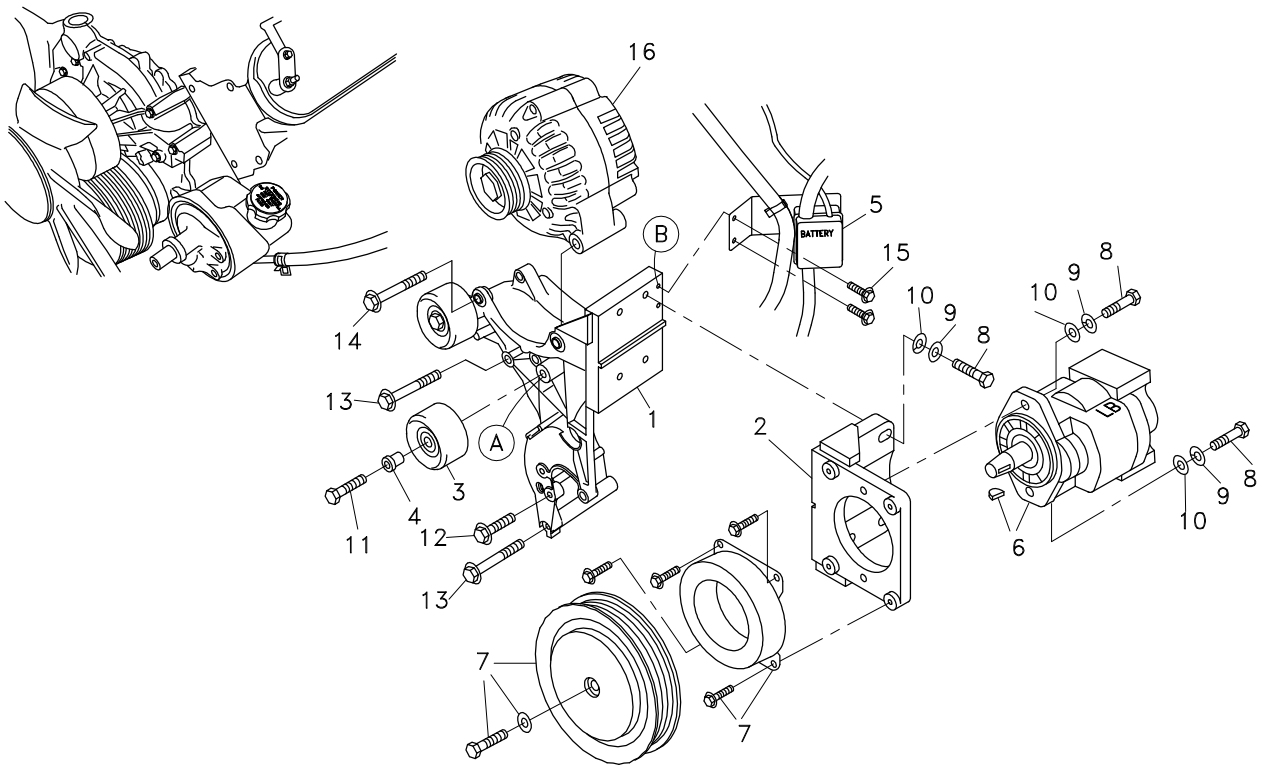


# DewEze CLUTCH PUMP KIT

711219	Bracket Assy. (Inc. item 1)	Kit No.	<b>700349</b>
711254	Bracket Bolt Pkg. (Inc. items 8-10)	Make	Chevrolet/GMC
None	Pulley Bolt Pkg.	Engine	6.0L
711255	Idler Bolt Pkg. (Inc. items 4, 11)	Fuel	Gas
None	Fan Spacer Bolt Pkg.	Year	1999
		Equipment	With A/C
		Revised	NC 9-9-99

ITEM	PART #	DESCRIPTION
1.	711219	Alt/power steer. bracket
2.	711216	Foot mount
3.	740294	Idler pulley
4.	711073	Idler bushing
5.	OEM	Battery cable bracket
6.	*	Pump
7.	740144	Clutch
8.	110425	3/8-16 x 1 1/4 Bolt
9.	110672	3/8 Lock washer
10.	110676	3/8 Flat washer
11.	110404	3/8-16 x 1 3/4 bolt
12.	OEM	Power steer. pump bolt
13.	OEM	Bracket mount bolt
14.	OEM	Alternator bolt
15.	OEM	Battery cable bracket mount bolt
16.	OEM	Alternator
17.	740295	Belt/Micro-V K061105

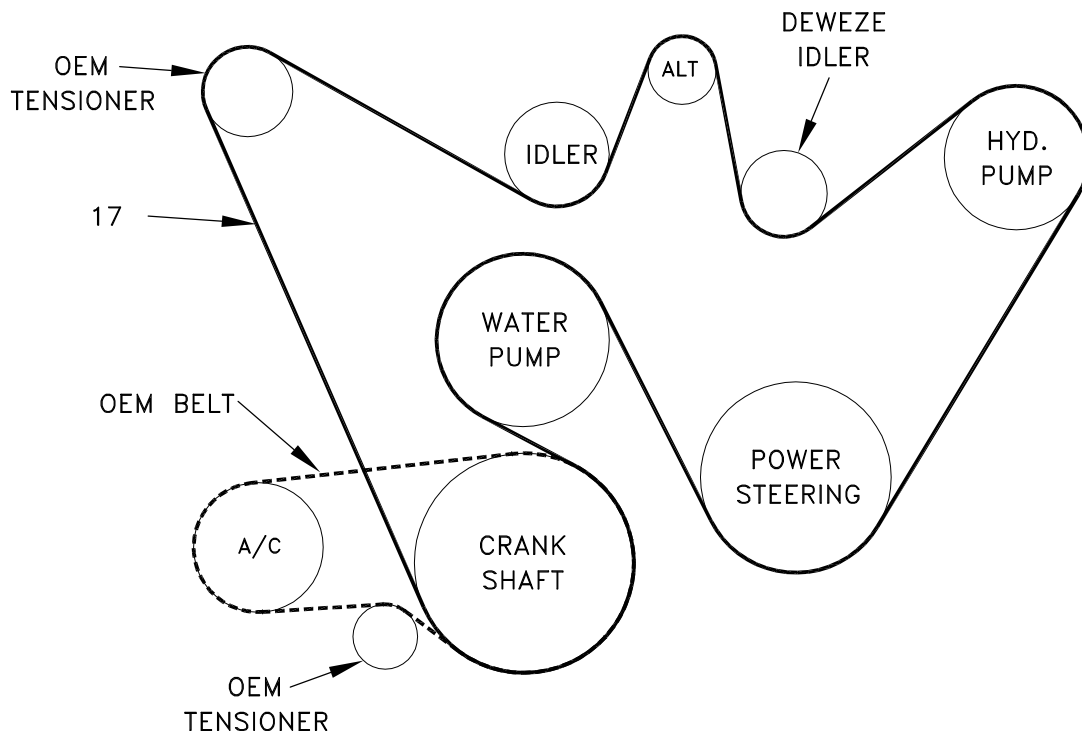
\* See master list for pump part no.



(A),(B),(C)... Denotes bolt holes in engine to locate corresponding holes in Pump Brkt.

FIG. 2

BELT DIAGRAM



# DewEze

Clutch Pump Kit  
#700349  
Chevrolet/  
GMC 6.0L  
w/ and w/o A/C  
'A' mount  
1999

## INSTALLATION INSTRUCTIONS

1. Disconnect the battery.
2. Remove the OEM serpentine belt.
3. Detach the battery cable bracket (5) from the OEM alternator bracket by removing two bolts. Keep the bolts.
4. Remove alternator (16) from the alternator bracket by removing two bolts. Keep these bolts.
5. Make a note of how far the power steering pulley is on the shaft so it can be reinstalled in the same position. Remove the power steering pulley using a pulley removal tool. Remove the three bolts holding the power steering pump to the power steering-alternator bracket. Keep these bolts.
6. Remove the four bolts mounting the alternator bracket to the engine and keep these bolts.
7. Remove the OEM idler from the OEM alternator bracket and put it on the DewEze alternator bracket (1) in the same location using the OEM bolt. Insert the 3/8 x 1 3/4 bolt (11) through the shoulder side of the idler bushing (4) and into the DewEze idler (3). Bolt this idler to the alternator bracket at location A.
8. Attach the alternator bracket to the engine at the same location as the OEM bracket using the four OEM bolts (13). Attach the power steering pump to the alternator bracket using the three OEM bolts (12). Start the pulley onto the shaft. Using a pulley installer tool press the pulley on until it is lined up with the crank pulley using a straightedge across both pulleys. Attach the alternator to the top of the bracket using the two OEM bolts (14). Attach the battery cable bracket (5) to the alternator bracket using the OEM bolts (15).
9. Mount the clutch coil (7) onto the front of the footmount using the four wiz flange bolts provided with the clutch. Attach the pump footmount (2) to the side of the alternator bracket using four 3/8 x 1 1/4 bolts (8) with 3/8" lock washers (9) and 3/8" flat washers (10) aligning the groove so it will slide freely forward and back. Do not tighten the bolts yet.
10. Attach the pump (6) to the back of the pump footmount (2) using two 3/8 x 1 1/4 bolts (10), and two 3/8 flat washers (29).
11. Place the key in the pump shaft and slide the clutch pulley onto the pump shaft. Thread the bolt with flat washer, supplied with the clutch, into the shaft and tighten. Line up the pump pulley with the crank pulley by sliding the footmount in or out using a straightedge across both pulleys. When the pulleys are aligned, tighten the bolts mounting the footmount.
12. Install the serpentine pump drive belt (17).
13. Connect the battery.
14. Run the engine and check for any clearance or alignment problems. Adjust as needed.