

711109	Bracket Assy. (Inc. item 1, 2)		Kit No.	700320
711107	Bracket Bolt Pkg. (Inc. items 6-9, 16, 19)		Make	Chevy
None	Pulley Bolt Pkg.		Engine	6.5L
711108	Idler Bolt Pkg. (Inc. items 10, 11, 15)		Fuel	Diesel
None	Fan Spacer Bolt Pkg.		Year	1997
			Equipment	Van, Turbo
			Revised	A 7-16-97

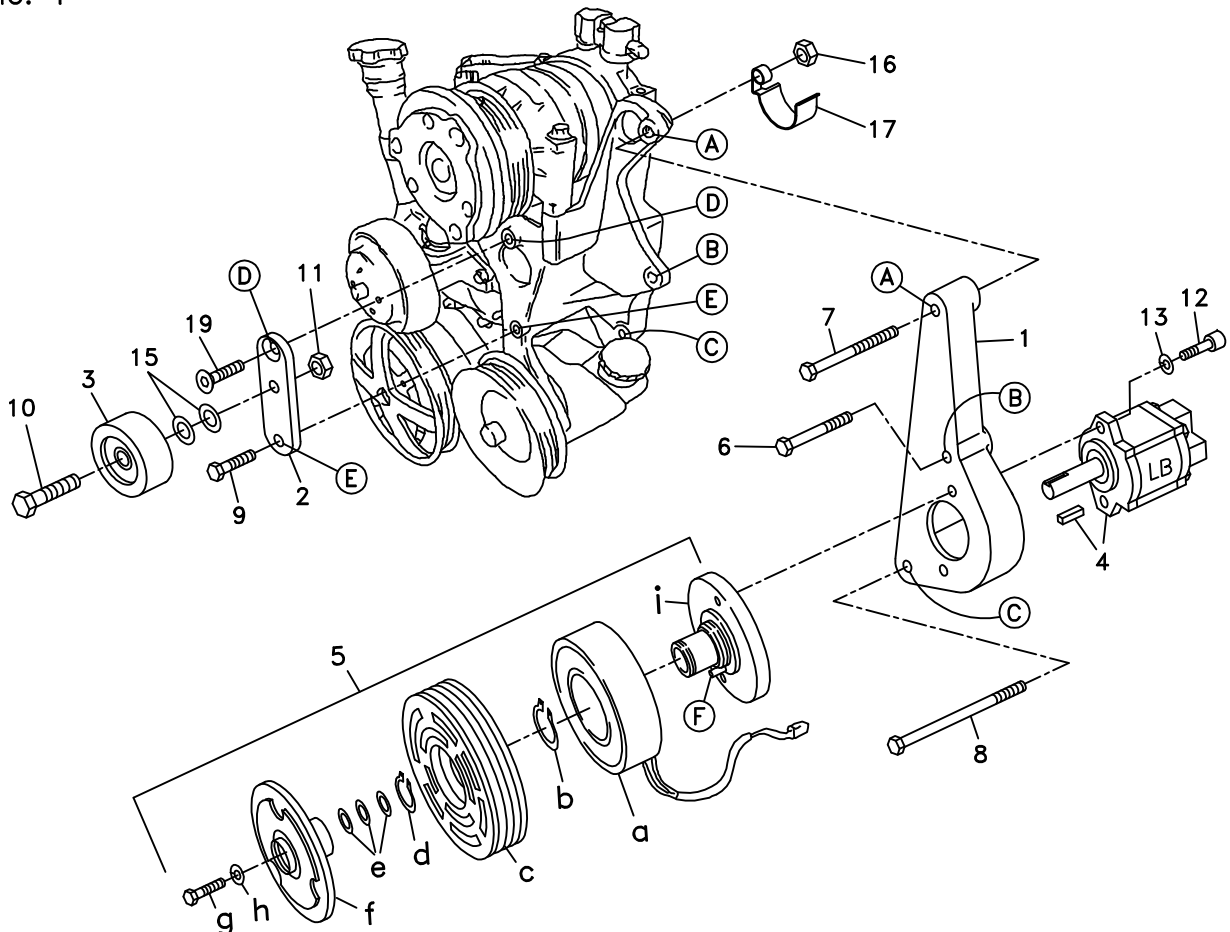
ITEM	PART #	DESCRIPTION		
1.	711103	Pump mount bracket	17.	OEM Hose supprt
2.	711104	Idler bracket	18.	740209 Belt/Micro-V K061130
3.	740243	Idler pulley/2.50" O.D., .625" I.D.	19.	110223 M10 x 30 x 1.5 C'sunk bolt
4.	*	Pump		
5.	740162	Clutch/6-groove, 4.75" serp.		
6.	110180	M10 x 60 x 1.5 Bolt		
7.	711116	M10 x 85 x 1.5 Bolt		
8.	110487	M10 x 120 x 1.5 Bolt		
9.	110479	M10 x 30 x 1.5 Bolt		
10.	110382	5/8NC x 2 Bolt		
11.	110039	5/8NC Jam nut		
12.	110465	3/8NC x 1 1/4 Skt hd cap screw		
13.	110672	3/8 Lock washer		
14.	-----	-----		
15.	110668	5/8 Machine bushing (10 ga)		
16.	110640	M10 x 1.5 Nut		

- 5a. Coil
- 5b. Snap ring/large
- 5c. Pulley Bolt
- 5d. Snap ring/small
- 5e. Shim
- 5f. Hub/armature
- 5g. Bolt
- 5h. Lock washer
- 5i. Hub/clutch

These items referenced in instructions. They are not available seperately.

\* The only pumps available for this kit are 720176, 720178, 720202, and 720206 which are 'AA' mounts.

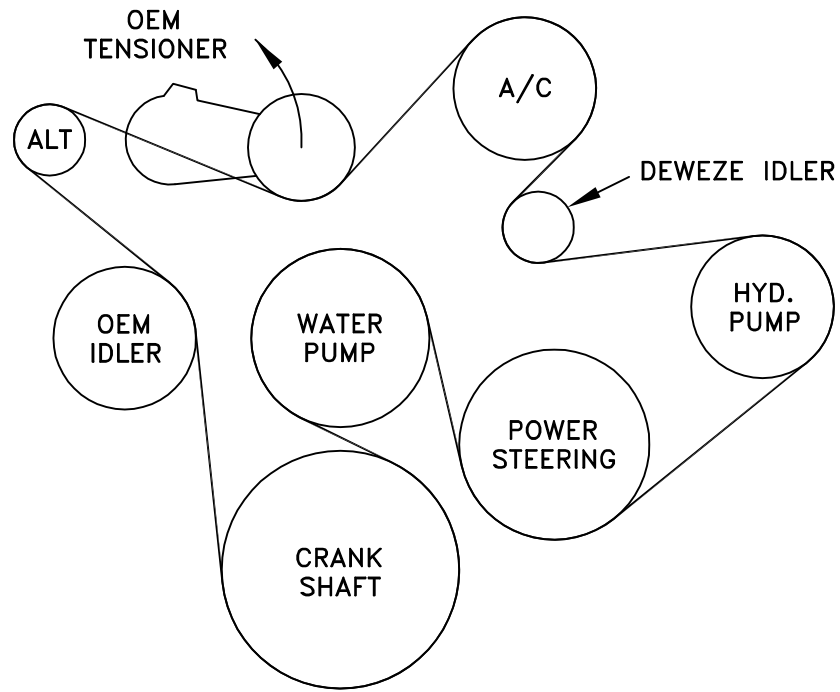
FIG. 1



(A),(B),(C)... Denotes bolt holes in engine to locate corresponding holes in Pump Brkt.

FIG. 2

BELT DIAGRAM



# DewEze

Clutch Pump Kit  
#700320  
Chevy 6.5L  
V A N  
1997

## I N S T A L L A T I O N I N S T R U C T I O N S

**NOTE: Suction hose to pump must be a wire braid hose; minimum 1" I.D. for 7 & 9 GPM pumps, 1 1/4" I.D. for 12 & 17 GPM pumps. Installations with smaller suction hoses will void the pump warranty.**

1. Disconnect battery.
2. Remove air cleaner box by removing three bolts.
3. Remove OEM belt.
4. Remove upper radiator hose support (17) and save.
5. Insert 5/8 x 2 bolt (10) through idler, through two 5/8 x 10 ga. machine bushings (15) on back of idler and thread into bracket and secure on back with 5/8 jam nut (11). Mount bracket and pulley assembly to engine at locations D and E using two 10mm x 30mm bolts (9).
6. Hold pump (4) onto back of mounting plate (1) and clutch hub (5i) onto front of mounting plate, making sure anti-rotation pin (F) on front of hub is on the side that will be away from the engine. Place two 3/8 x 1 1/4 socket head bolts (12) and 3/8 lock washers (13) through pump, through mounting plate and thread into hub.
7. Slide coil (5a) over hub, aligning hole in the back plate of coil with the anti-rotation pin (G) in the hub. The wires from the coil should be on the same side as the pin (G). Install large snap ring (5b) to hold coil in place.  
**NOTE: THE BEVEL ON BOTH SNAP RINGS MUST FACE AWAY FROM THE PUMP. REFER TO INSTRUCTION SHEET FOR THE CLUTCH FOR CORRECT INSTALLATION OF SNAP RINGS.**
8. Slide clutch pulley (5c) onto hub. Install small snap ring (5d) to hold pulley in place.
9. Place the key (4) onto the pump shaft. Slide the hub/armature (5f) onto the pump shaft aligning the keyways.  
**NOTE: SET THE AIR GAP BETWEEN THE HUB/ARMATURE AND THE PULLEY USING SHIMS (5e) ACCORDING TO INSTRUCTION SHEET FOR CLUTCH.**
10. Thread bolt (5g) and lock washer (5h) into pump shaft. Torque to value in clutch instruction sheet.
11. Mount pump mounting bracket with pump and clutch onto engine using 10mm x 85mm bolt (7) at location A, placing OEM hose support (17) on rear of A/C bracket and securing with 10mm nut (16). Insert 10mm x 60mm bolt (6) at location B and a 10mm x 120mm bolt (8) at location C. Tighten all bolts.  
**NOTE: Disregard the threads in holes A, B, and C. They are used for tooling to machine the bracket. The 10mm bolts are correct and go through the bracket and thread into the engine only.**

12. Install belt (18) supplied in kit.
13. Connect battery.
24. Run the engine and check for any clearance or alignment problems. Adjust as needed.
15. Replace air cleaner box.
16. With everything installed, run engine again checking for any problems.