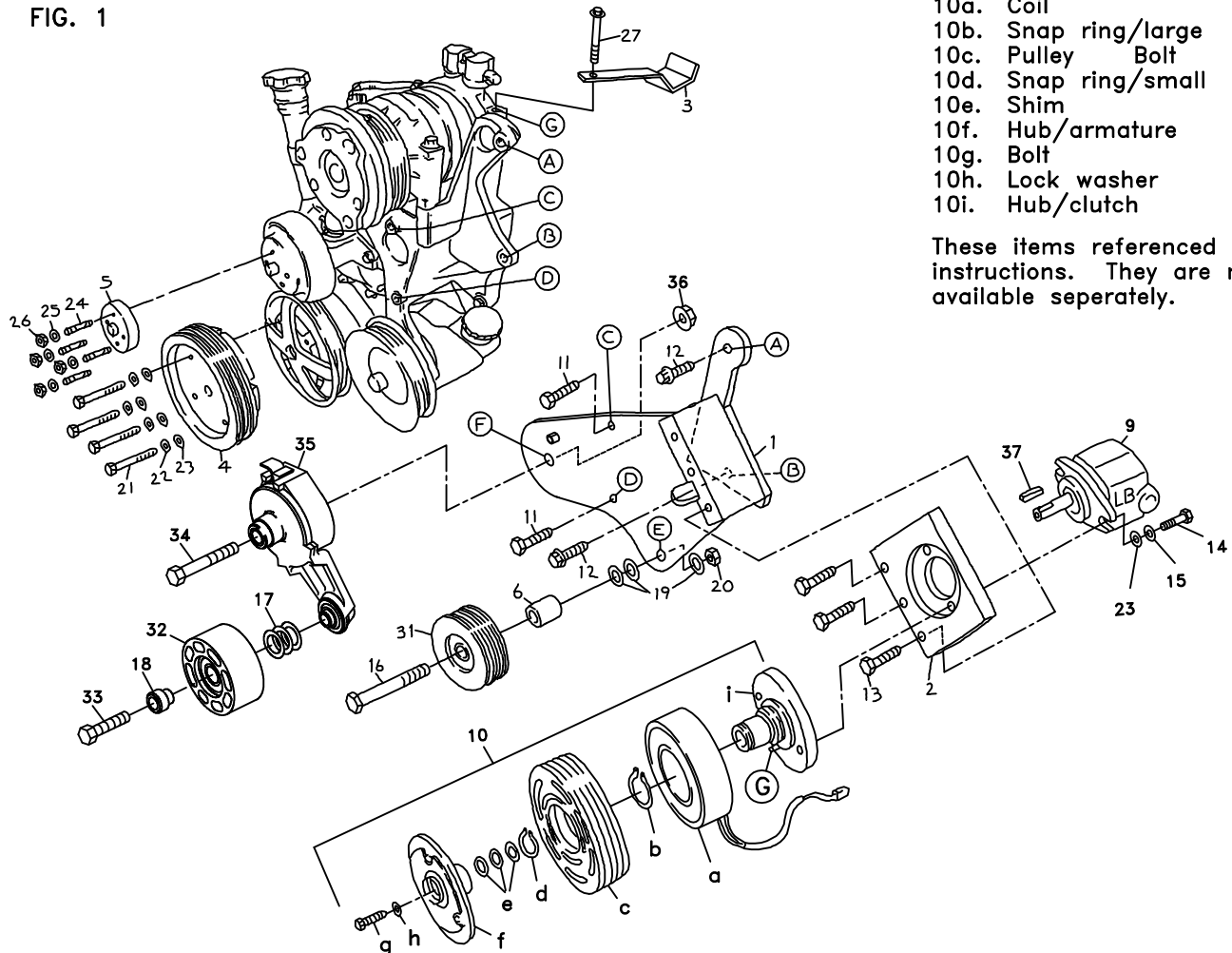


710075	Bracket Assy. (Inc. items 1-3)		Kit No.	700095
711052	Bracket Bolt Pkg. (Inc. items 11, 13)		Make	Chevy
710436	Pulley Bolt Pkg. (Inc. items 21-23)		Engine	6.5L
711593	Idler Bolt Pkg. (Inc. items 6, 16, 19, 20)		Fuel	Diesel
740376	Tensioner assy. (Inc. items 17, 18, 32-36)		Year	1996
700186	Fan Spacer Bolt Pkg. (Inc. item 24-26)		Options	Turbo
			Revised	C 2-24-04

ITEM	PART #	DESCRIPTION	ITEM	PART #	DESCRIPTION
1.	711031	Pump mounting bracket	20.	110639	5/8NC Lock nut
2.	711051	Pump plate	21.	110113	10mm x 90mm x 1.50 bolt
3.	711001	Hose holder	22.	110671	7/16 Lock washer
4.	740210	Crankshaft pulley	23.	110676	3/8 Flat washer
5.	700207	Fan spacer	24.	710350	8mm x 65mm x 1.25 stud
6.	711004	Idler spacer, 1.23" long	25.	110674	5/16 Lock washer
7.	120068	Hose splice	26.	110643	8mm x 1.25 nut
8.	700213	Hose extension, 3"	27.	OEM	Bolt
9.	*	Pump	28.	511084	Hose Clamp
10.	740183	Clutch, Serpentine	29.	OEM	Hose Clamp
11.	110479	10mm x 30mm x 1.50 bolt	30.	740226	Belt/Micro-V K080645
12.	OEM	Bolt	31.	740157	Idler pulley, serpentine
13.	110435	3/8NC x 1 1/2 Bolt	32.	740151	Idler pulley, flat
14.	110425	3/8NC x 1 1/4 bolt	33.	110242	7/16-14 x 2 1/4 LH Bolt
15.	110672	3/8 Lock washer	34.	110002	1/2NC x 3 1/2 Bolt
16.	110386	5/8NC x 3 1/2 bolt	35.	740375	Tensioner
17.	110204	Shim 1.00" OD x .688" ID	36.	110588	1/2NC Wiz nut
18.	711271	Idler bushing	37.	710918	Key
19.	110650	5/8 Flat washer			

* The only pumps available for this kit are 720176 and 720178 which are .61 in³ and a 'AA' mount.

FIG. 1

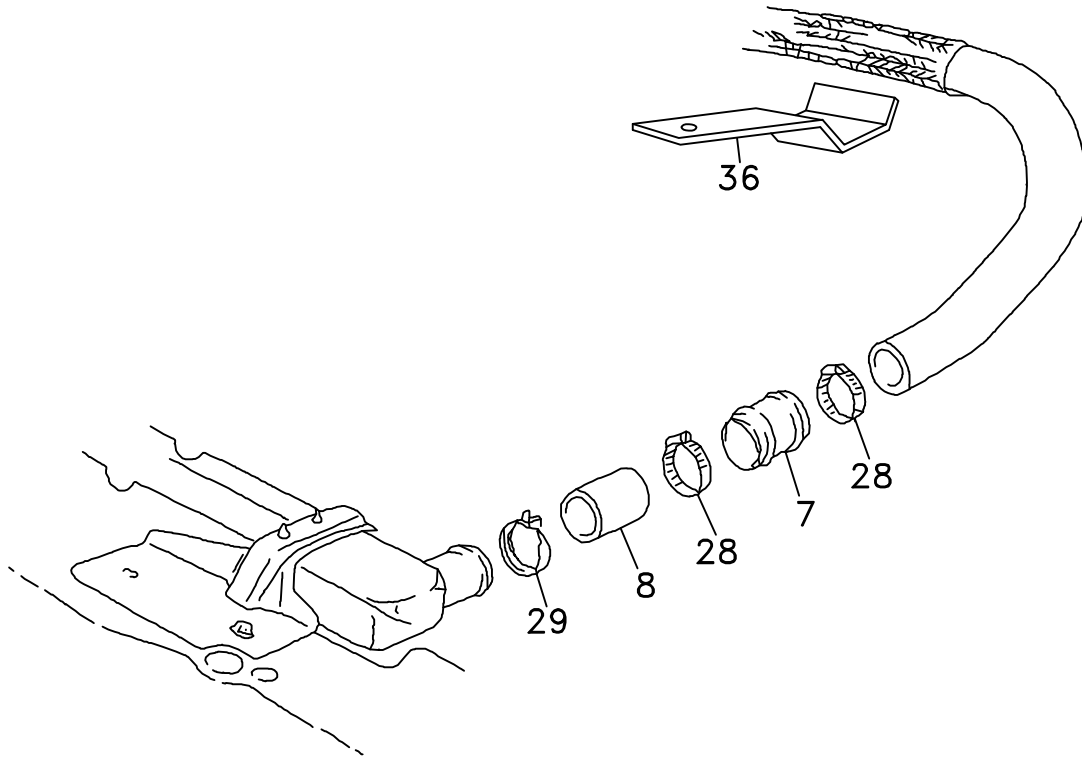


- 10a. Coil
- 10b. Snap ring/large
- 10c. Pulley Bolt
- 10d. Snap ring/small
- 10e. Shim
- 10f. Hub/armature
- 10g. Bolt
- 10h. Lock washer
- 10i. Hub/clutch

These items referenced in instructions. They are not available seperately.

(A),(B),(C)... Denotes bolt holes in engine to locate corresponding holes in Pump Brkt.

FIG. 2



DEWEZE

Clutch Pump Kit
#700095
Chevy 6.5L
Turbo Diesel
1996

INSTALLATION INSTRUCTIONS

NOTE: Suction hose to pump must be a wire braid hose; minimum 1" I.D. for 7 and 9 gpm pumps; 1 1/4" I.D. for 12 and 17 gpm pumps. Installation with smaller suction hoses will void the pump warranty.

1. Disconnect battery.
2. Remove radiator shroud and fan.
3. Unbolt OEM bolt (27) on air conditioner at location (G). Remove OEM hose holder.
4. Remove radiator hose from radiator. Place 3" section of radiator hose (8) on radiator, using OEM clamp (29). Insert brass hose splice (7) into 3" hose and place OEM hose over splice using hose clamps (28).
5. Place DewEze hose holder (3) on air conditioner at location (G) using OEM bolt (27).
6. Place serpentine idler (31) with 5/8 x 3 1/2 bolt (16), bushing (6) and two 5/8 flat washers (19) onto hole (E) and secure with 5/8 flat washer (19) and 5/8 lock nut (20) on back of bracket.
7. Place bracket (1) into place using OEM bolts (12) at locations (A and B) and 10mm x 30mm bolts (11) at locations (C and D).
8. Insert idler bushing (18) into flat idler (32) and place on 1/2 x 2 1/4 bolt (33). Thread bolt into tensioner arm (35), tighten, and secure on the back side with 1/2 jam nut (17). Mount tensioner onto pump mounting bracket (1) at location F, placing locating hole on back of tensioner over roll pin in bracket. Thread 1/2 x 3 1/2 bolt (34) through center of tensioner into bracket, tighten, and secure on back with 1/2 wiz flange nut (36).
9. Bolt pump (9) onto back side of pump plate (2) using 3/8 x 1 1/4 bolts (14) and 3/8 lock washers (15).
10. Hold pump (9) onto back of mounting plate (2) and clutch hub (10i) onto front of mounting plate, making sure anti-rotation pin (G) on front of hub is on the side that will be away from the engine. Place two 3/8 x 1 1/4 bolts (14), 3/8 lock washers (15), and 3/8 flat washers (23) through pump, through mounting plate and thread into hub.
11. Slide coil (10a) over hub, aligning hole in the back plate of coil with the anti-rotation pin (G) in the hub. The wires from the coil should be on the same side as the pin (G). Install large snap ring (10b) to hold coil in place.
NOTE: THE BEVEL ON BOTH SNAP RINGS MUST FACE AWAY FROM THE PUMP. REFER TO INSTRUCTION SHEET FOR THE CLUTCH FOR CORRECT INSTALLATION OF SNAP RINGS.
12. Slide clutch pulley (10c) onto hub. Install small snap ring (10d) to hold pulley in place.
13. Place the key (14) onto the pump shaft. Slide the hub/armature (10f) onto the pump shaft aligning the keyways.

NOTE: SET THE AIR GAP BETWEEN THE HUB/ARMATURE AND THE PULLEY USING SHIMS (10e) ACCORDING TO INSTRUCTION SHEET FOR CLUTCH.

14. Thread bolt (10g) and lock washer (10h) into pump shaft. Torque to value in clutch instruction sheet.
15. Install pump, clutch, and plate assembly onto engine bracket with three 3/8 x 1 1/2 bolts (13).
16. Install the DewEze crankshaft pulley (4) using four 10mm x 120mm bolts (21).
NOTE: The flange is short on the OEM pulley that centers the DewEze pulley. Make sure the flange and the machined DewEze pulley are lined up before tightening bolts.
17. Remove OEM stud bolts in water pump pulley.
18. Install the four 8mm x 65mm stud bolts (24), with the short-threaded end into the water pump. Slide the fan extension (5) over the stud bolts and secure in place with two nuts (26) and flat washers (25). Do not mount fan at this time.
19. Install the serpentine belt (30).
20. With belts tightened, run the engine and check for any installation or alignment problems. Adjust as needed. Retighten belts if needed.
21. Remove the two nuts and flat washers holding the fan extension. Install fan onto fan extension using all four nuts with lock washers.
22. Place fan and shroud into position.
23. Start and run the engine again, checking for any problems.