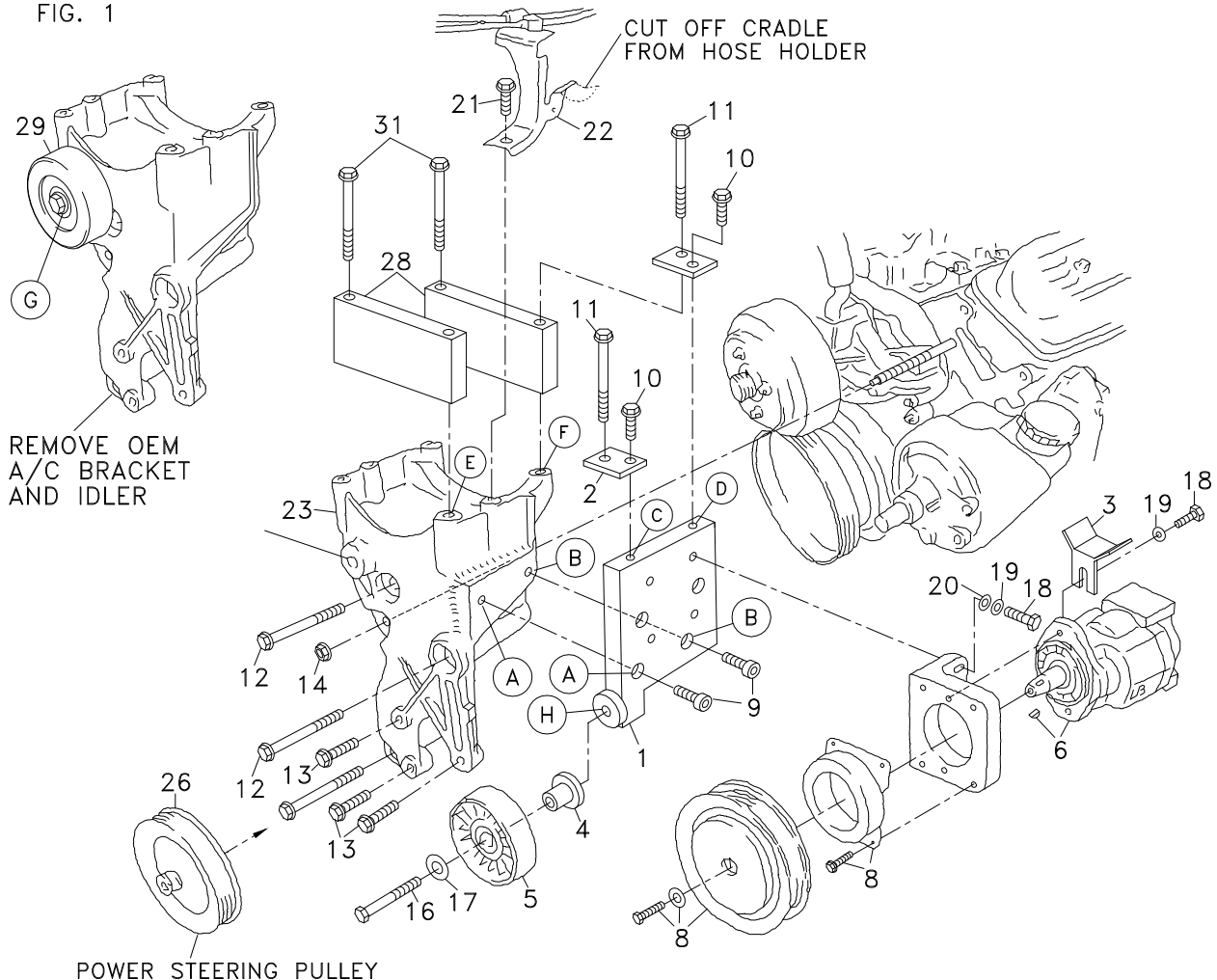


710070	Bracket Assy. (Inc. items 1-3, 28)		Kit No.	700089
711026	Bracket Bolt Pkg. (Inc. items 9-11,18-20, 30)		Make	Chevy
None	Pulley Bolt Pkg. (Inc. items)		Engine	(5.7L) 350
711013	Idler Bolt Pkg. (Inc. items 4,16,17)		Fuel	Gas
None	Fan Spacer Bolt Pkg. (Inc. item)		Year	1996
			Options	Without A/C
			Revised	C 8-16-06

ITEM	PART #	DESCRIPTION		
1.	711023	Pump mount plate	17.	110670 7/16 Flat washer
2.	711008	Tab	18.	110425 3/8NC x 1 1/4 Bolt
3.	711006	Hose holder	19.	110672 3/8 Lock washer
4.	711009	Idler bushing	20.	110676 3/8 Flat washer
5.	740151	Idler	21.	OEM Bolt
6.	*	Pump	22.	OEM Hose holder
7.	711216	Footmount	23.	700214 Air conditioner bracket
8.	740144	Clutch, serpentine	24.	OEM Engine lift hook
9.	110178	3/8NC x 1 1/2 Skt hd bolt	25.	OEM Nut
10.	110440	3/8NC x 1 Wiz flange bolt	26.	OEM Power steering pulley
11.	110184	10mm x 110mm x 1.50 Bolt	27.	740207 Belt/Micro-V K061058
12.	OEM	Bolt	28.	711025 Block, replacement
13.	OEM	Bolt	29.	OEM Idler
14.	OEM	Nut	30.	-----
15.	OEM	Bolt	31.	110183 10mm x 100mm x 1.50 Bolt
16.	110179	7/16 x 2 3/4 Bolt		

* See Master List For Pump Part No.

FIG. 1



(A) Denotes bolt holes in engine to locate corresponding holes in Pump Brkt.

FIG. 2

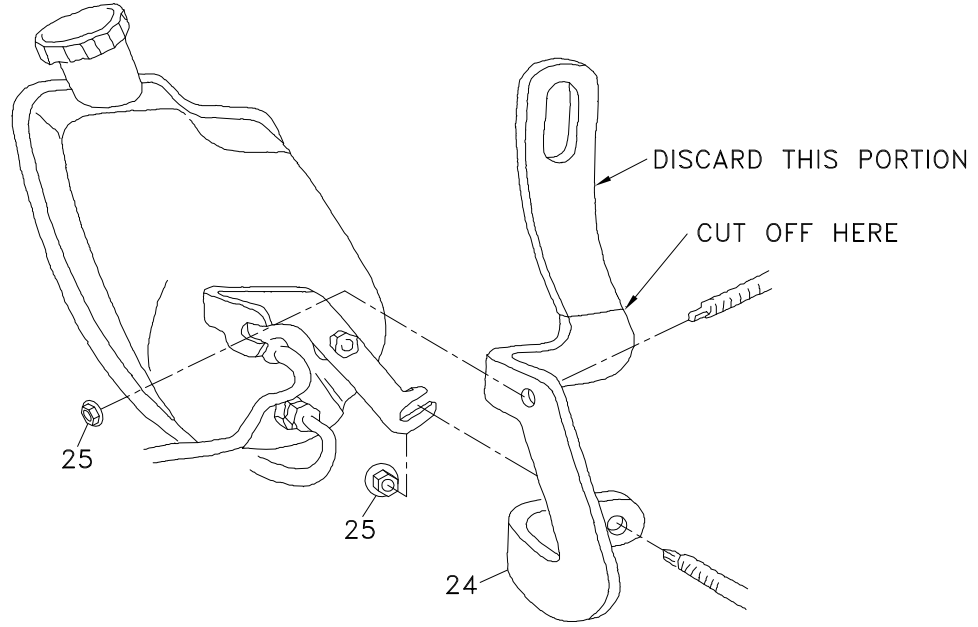
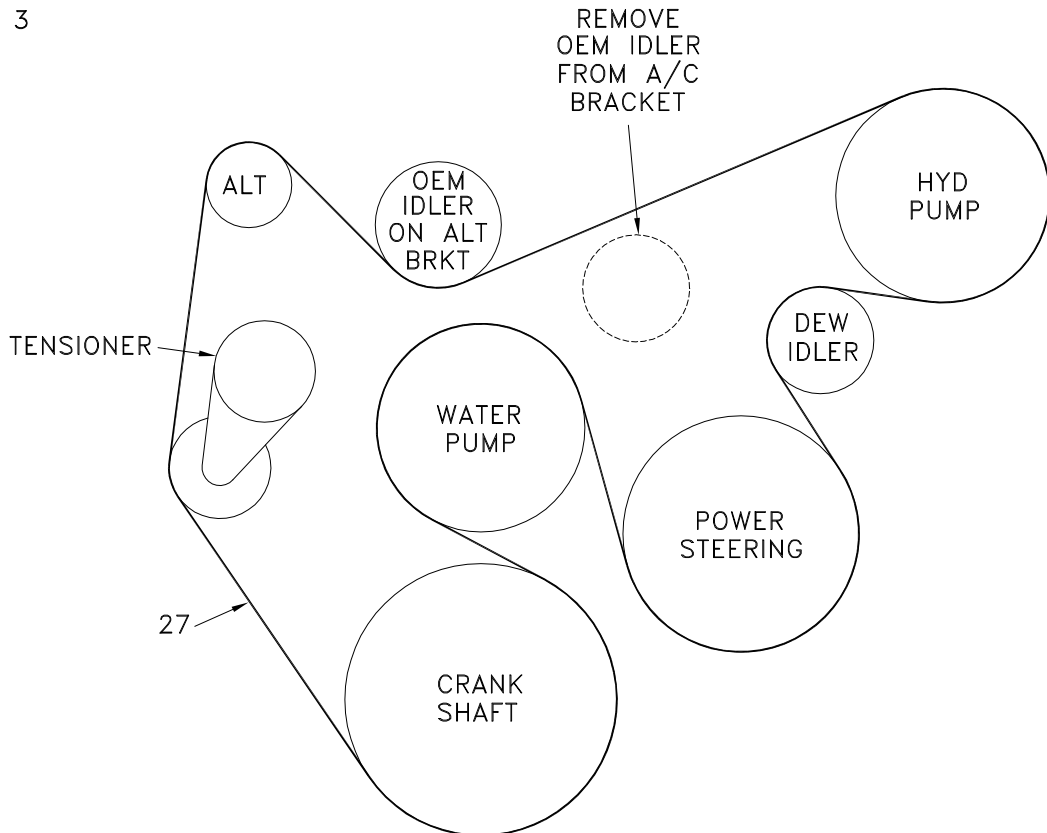


FIG. 3



DewEze Clutch Pump Kit #700089
Chevy 350 Without A/C
1996

INSTALLATION INSTRUCTIONS

NOTE: Suction hose to pump must be a wire braid hose; minimum 1" I.D. for 7 & 9 gpm pumps; 1" I.D. for 12 & 17 gpm pumps. Installations with smaller suction hoses will void the pump warranty.

1. Disconnect battery.
2. Remove fan and fan shroud.
3. Remove bolt from radiator hose support (21).
4. Remove power steering pulley (26).
5. Remove bolts (12, 13) and nut (14) mounting cast aluminum air conditioner/power steering bracket to engine.

NOTE: Leave OEM idler (29) on OEM A/C bracket at location G. It will not be used on DewEze A/C bracket. Do not remove OEM idler from alternator bracket. It will still be used.

6. Remove power steering pump from engine (2 nuts on back side).
7. Remove engine lifting bracket (24) behind power steering pump.
8. Cut lifting bracket as shown in fig. 2. Discard upper slotted portion.
9. Replace lifting bracket back on engine.
10. Replace power steering pump and secure with OEM nuts.
11. Bolt DewEze air conditioner bracket (23) in place using OEM bolts (12, 13) and nut (14).
12. Replace power steering pulley.
13. Bolt aluminum blocks (28) in place on A/C bracket with only one 10mm x 130mm bolt (11) in each block on passenger side.
14. Cut radiator hose support cradle off of OEM bracket as shown in fig. 1. Bolt support back on air conditioner bracket using OEM bolt (21).
15. Bolt on pump mounting plate (1) using two 3/8 x 1 1/2 socket head bolts (9) in holes (A and B).
16. Place tabs (2) on blocks (28) at holes E and F using 10mm x 110mm bolts (11) and on pump plate (1) at holes C and D using 3/8 x 1 wiz bolts (10).
17. Place footmount on plate using four 3/8 x 1 1/4 bolts (18) with 3/8 lock washers (19) and 3/8 flat washer (20).
18. Mount pump on footmount using two 3/8 x 1 1/4 bolts (18) with 3/8 lock washers (19). Do not tighten.
19. Place hose holder (3) on top mounting bolt of pump, tighten bolts.
20. Mount clutch coil (8) using four wiz bolts provided with clutch. Mount clutch pulley using bolt and heavy flat washer provided with clutch.

21. Bolt idler pulley (5) using 7/16 x 2 3/4 bolt (16), 7/16 flat washer (17), and bushing (4) into pump place at hole (H).
22. Install belt (27) as shown in fig. 3.
23. Reconnect the battery.
24. Run the engine and check for any clearances or alignment problems. Adjust as needed.
25. Place fan and shroud into position.
26. Run the engine again, checking for any problems.