

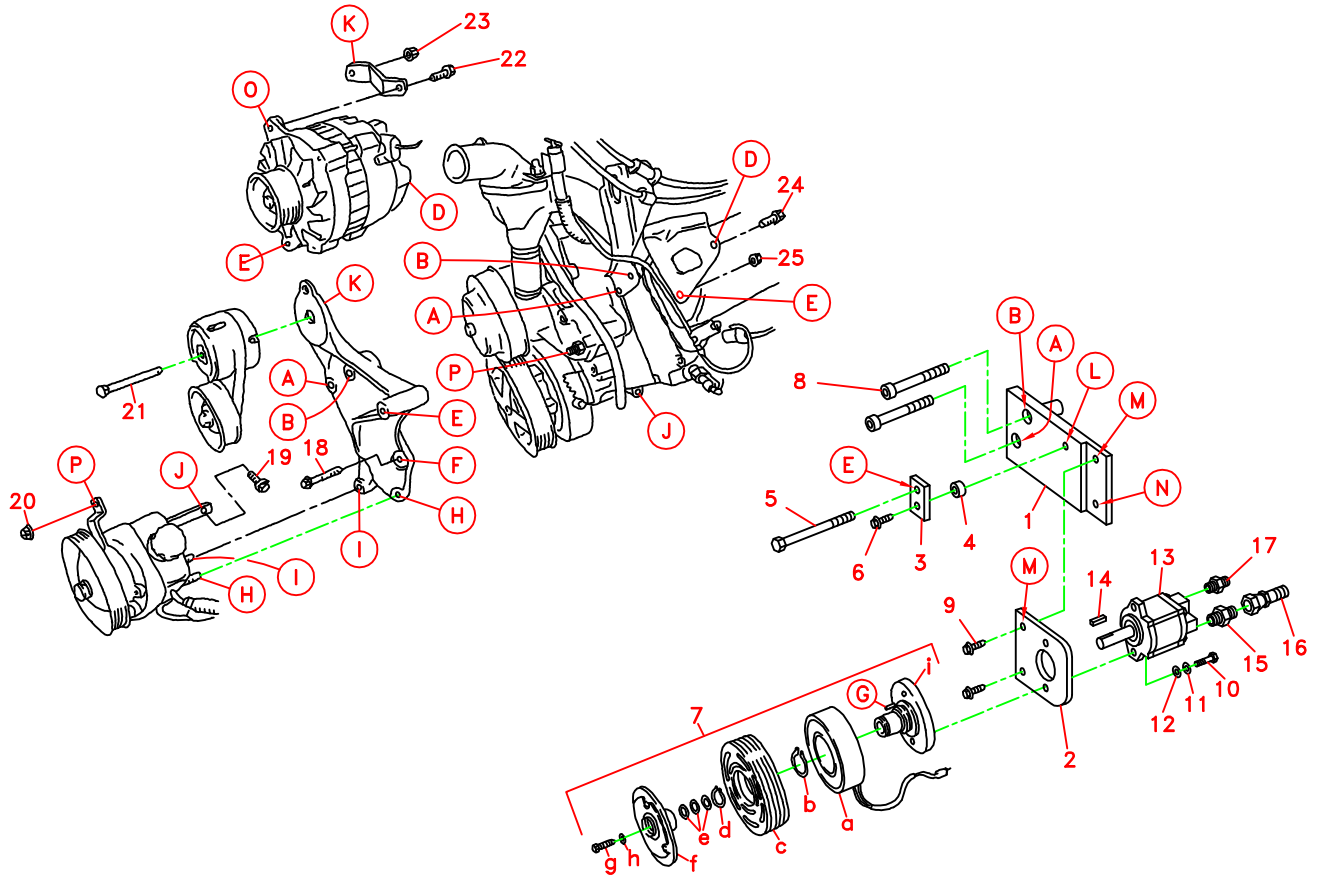
DewEze CLUTCH PUMP KIT

710066	Bracket Assy. (Inc. items 1-3)		Kit No.	700086
710985	Bracket Bolt Pkg. (Inc. items 4-6, 8-12, 25)		Make	Chevy
None	Pulley Bolt Pkg.		Engine	6.5L
None	Idler Bolt Pkg.		Fuel	Diesel
None	Fan Spacer Bolt Pkg.		Year	1992-95
			Options	
			Revised	A 5-18-95

ITEM	PART #	DESCRIPTION
1.	710983	Engine bracket
2.	710978	Pump mount plate
3.	710984	Alternator link
4.	710986	Spacer/.275"
5.	110542	3/8NC x 5 1/2 Bolt
6.	110161	3/8NC x 1 1/4 Wiz bolt
7.	740162	Clutch assy. (inc. a-i)
7a.	-----	Coil
7b.	-----	Snap ring/large
7c.	-----	Pulley
7d.	-----	Snap ring/small
7e.	-----	Shim
7f.	-----	Hub/armature
7g.	-----	Bolt
7h.	-----	Lock washer
7i.	-----	Hub/Clutch
8.	110171	10mm x 110mm x 1.5 Skt hd bolt
9.	110437	3/8NC x 3/4 Wiz bolt
10.	110425	3/8NC x 1 1/4 bolt
11.	110672	3/8 Lock washer
12.	110676	3/8 Flat washer
13.	*	Pump
14.	710918	Key
15.	120251	Adapter 10MB-10MJ
16.	120338	Adapter 12-10FJX
17.	120277	Adapter 8MB-8MJ
18.	OEM	Bolt
19.	OEM	Bolt
20.	OEM	Nut
21.	OEM	Bolt
22.	OEM	Bolt
23.	OEM	Nut
24.	OEM	Bolt
25.	110621	3/8NC Lock nut
26.	740184	Belt/Micro-V K061045

* The only pumps available for this kit are 720176 and 720178 which are .61 in³ and a 'AA' mount.

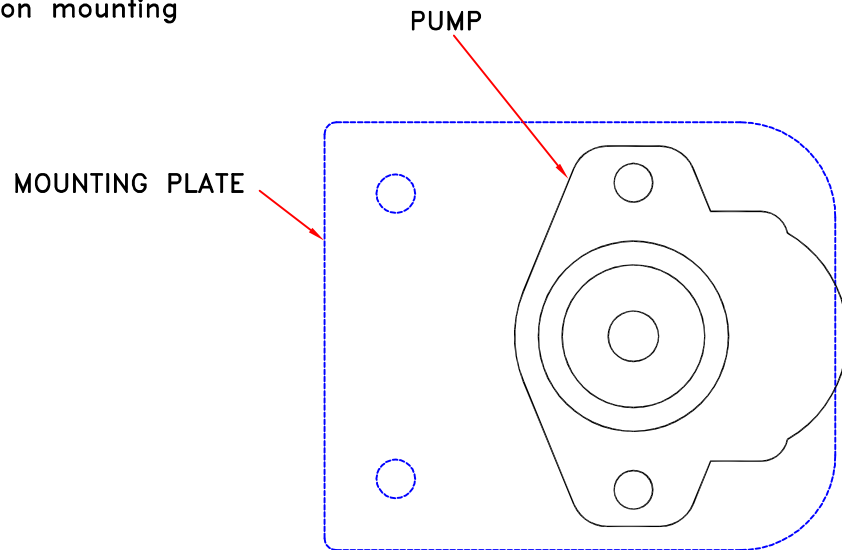
FIG. 1



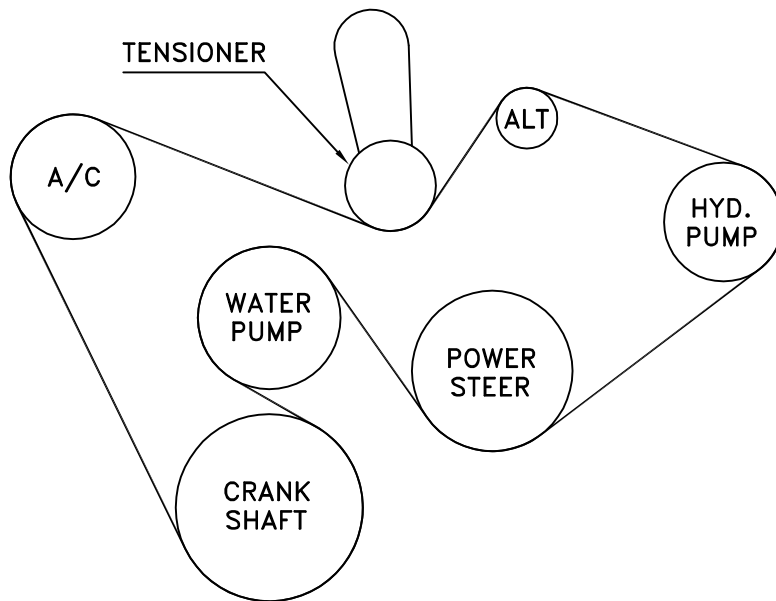
(A) Denotes bolt holes in engine to locate corresponding holes in Pump Brkt.

FIG. 2

Pump must be oriented on mounting plate as shown.



BELT INSTALLATION
FIG. 3



Chevy 6.5L Diesel
1992-95
Clutch Pump Kit #700086

INSTALLATION INSTRUCTIONS

NOTE: The only pumps available for this kit are 720176 and 720178 which are .61 cu. in. and a AA mount.

NOTE: Suction hose to pump must be a wire braid hose; minimum 1" I.D. for 7 GPM pump. Installation with a smaller suction hose will void the pump warranty.

1. Disconnect battery.
2. Remove fan, fan shroud, and OEM serpentine belt.
3. Remove alternator by unbolting one bolt from front at bottom at location E and two bolts (22, 24) in back at locations D and O. Lay alternator back on top of engine. Discard the long bolt from location E. It will be replaced.
4. Remove tensioner by unthreading nut (23) on back.
5. Remove power steering pump by unthreading one nut (20) from water pump at location P, two nuts on studs in back at locations H and I, and one bolt behind pump on engine block at location J. Discard the nuts. They will be replaced.
6. Remove cast tensioner bracket by unthreading two nuts at locations A and B and one bolt (18) at location F. Discard the nuts. They will be replaced.
7. Remove and discard the two studs from head at locations A and B. They will be replaced.
8. Replace OEM cast tensioner bracket by starting OEM bolt (18) at location F. Do not tighten yet.
9. Start 10mm x 110mm socket head bolts (8) through tensioner bracket and thread into head at locations A and B. Do not tighten.
10. Tighten OEM bolt (18) in tensioner bracket at location F.
11. Replace power steering pump using OEM bolts and nuts and tighten.
12. Remove 10mm x 110mm bolts (8) and place through Deweze engine bracket at locations A and B and into engine. Tighten bolts.
13. Replace alternator and linkage to tensioner using OEM bolts (22) and (24) in back. Do not tighten.
14. Insert 3/8 x 1 1/4 wiz bolt (6) through alternator link (3), through .275" spacer (4), and thread into Deweze bracket at location L. Do not tighten. Place 3/8 x 5 1/2 bolt (5) through other hole in link (3) and into alternator at location E. Thread 3/8 lock nut (25) onto back. Tighten all bolts and nuts on alternator.

15. Replace OEM tensioner using OEM bolt (21) and nut (23).
16. Hold pump (13) onto back of mounting plate (2) and clutch hub (7i) onto front of mounting plate, making sure anti-rotation pin (G) on front of hub is on the side that will be away from the engine. Place two 3/8 x 1 1/4 bolts (10), 3/8 lock washers (11), and 3/8 flat washers (12) through pump, through mounting plate and thread into hub.
17. Slide coil (7a) over hub, aligning hole in the back plate of coil with the anti-rotation pin (G) in the hub. The wires from the coil should be on the same side as the pin (G). Install large snap ring (7b) to hold coil in place.
NOTE: THE BEVEL ON BOTH SNAP RINGS MUST FACE AWAY FROM THE PUMP. REFER TO INSTRUCTION SHEET FOR THE CLUTCH FOR CORRECT INSTALLATION OF SNAP RINGS.
18. Slide clutch pulley (7c) onto hub. Install small snap ring (7d) to hold pulley in place.
19. Place the key (14) onto the pump shaft. Slide the hub/armature (7f) onto the pump shaft aligning the keyways.
NOTE: SET THE AIR GAP BETWEEN THE HUB/ARMATURE AND THE PULLEY USING SHIMS (7e) ACCORDING TO INSTRUCTION SHEET FOR CLUTCH.
20. Thread bolt (7g) and lock washer (7h) into pump shaft. Torque to value in clutch instruction sheet.
21. Install pump, clutch, and plate assembly onto engine bracket at location M and N with two 3/8 x 3/4 w/ flange bolts (9).
22. Install serpentine belt (26).
23. Reconnect battery.
24. Run the engine and check for clearance, alignment, and vibration problems. Adjust as needed.
25. Install fan and fan shroud.
26. Run the engine again checking for clearance.

—