

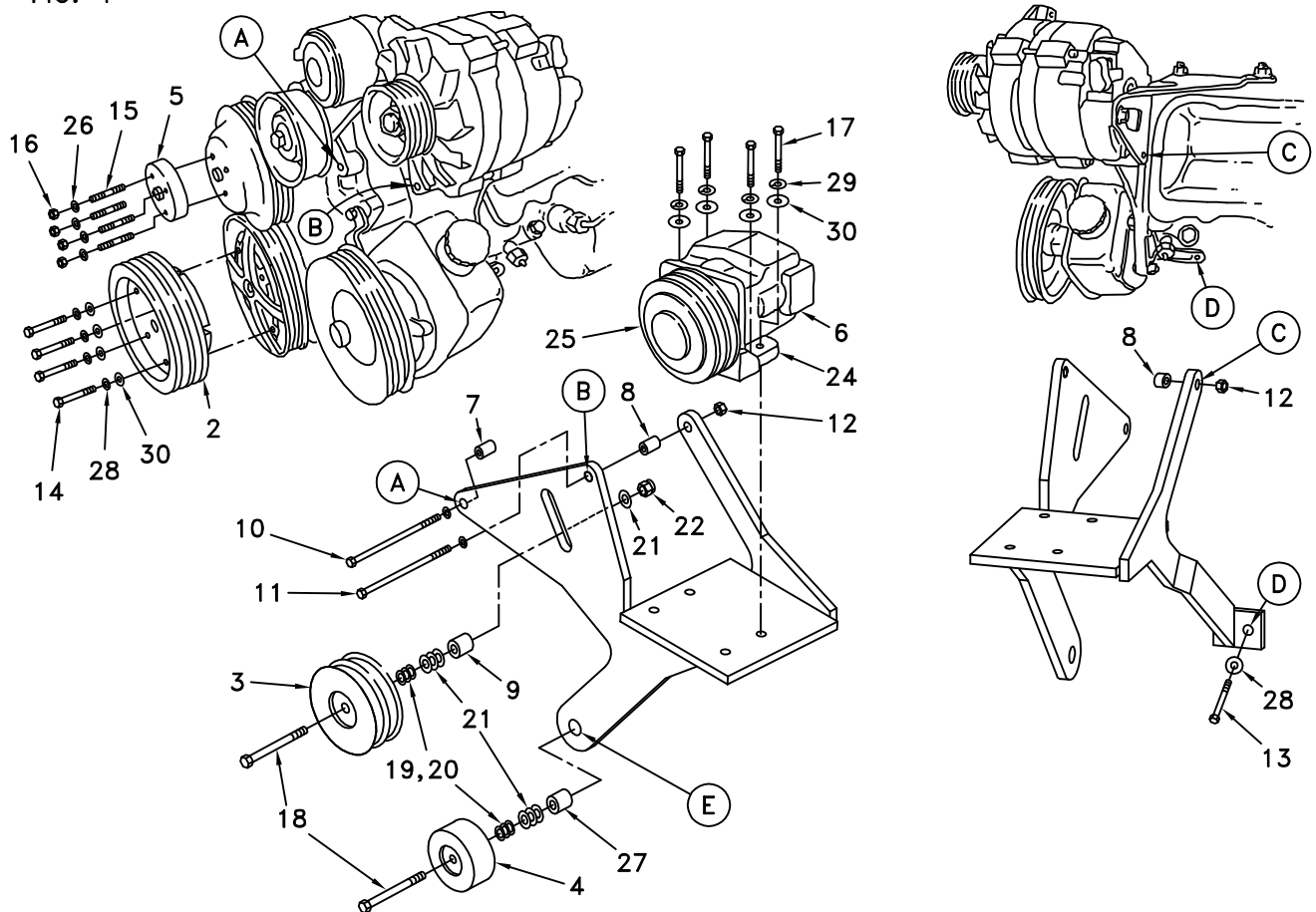
DEWEZE CLUTCH PUMP KIT

710061	Bracket Assy. (Inc. item 1)		Kit No.	700081
710933	Bracket Bolt Pkg. (Inc. items 7,8,10-13,17,28-30,32,33)		Make	Chevy
710436	Pulley Bolt Pkg. (Inc. items 14,28,30)		Engine	6.5L
710360	Idler (3) Bolt Pkg. (Inc. items 9,18-22)		Fuel	Diesel
710841	Idler (4) Bolt Pkg. (Inc. item 18-22,27)		Year	1995
700186	Fan Spacer Bolt Pkg. (Inc. item 15,16,26)		Options	Turbo
			Revised	C 2-13-04

ITEM	PART #	DESCRIPTION
1.	710061	Pump mounting bracket
2.	740071	Crankshaft pulley
3.	740133	Idler pulley 4.50" dia.
4.	740200	Idler pulley/flat 3.22" dia.
5.	700207	Fan spacer
6.	*	Pump
7.	710138	Spacer, 1.310"
8.	710139	Spacer, .550"
9.	710233	Spacer, 1.50" long, 1.25 O.D.
10.	110511	10mm X 150mm X 1.5 bolt
11.	110541	3/8 X 6 1/4 NC bolt
12.	110621	3/8 Lock nut
13.	110526	10mm X 40mm X 1.5 bolt
14.	110113	10mm X 90mm X 1.5 bolt
15.	710350	8mm X 65mm X 1.25 stud
16.	110643	8mm X 1.25 thd. nut
17.	110425	3/8 X 1 1/4 NC bolt
18.	110385	5/8 X 4 NC bolt
19.	110668	5/8 Machine bushing (10 ga.)
20.	110669	5/8 Machine bushing (14 ga.)
21.	110650	5/8 Flat washer
22.	110639	5/8 Lock nut
23.	740056	V-belt, Gates A60
24.	711216	Footmount
25.	740037	Clutch, Standard
	740038	Clutch, Heavy Duty
26.	110674	5/16 Lock washer
27.	710840	Spacer, 1.50" long, 1.125 O.D.
28.	110671	7/16 Lock washer
29.	110672	3/8 Lock washer
30.	110676	3/8 Flat washer
31.	740130	Serpentine belt, short
32.	110080	8mm X 35mm X 1.25 Bolt
33.	710261	Spacer, .625"

* See Master List For Pump Part No.

FIG. 1



Ⓐ Denotes bolt holes in engine to locate corresponding holes in Pump Brkt.

FIG. 2

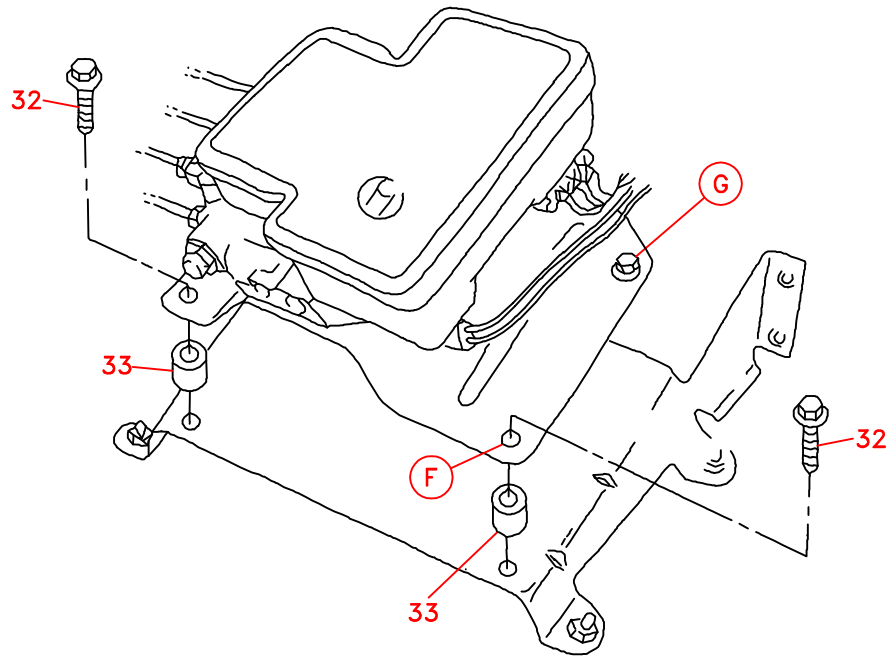
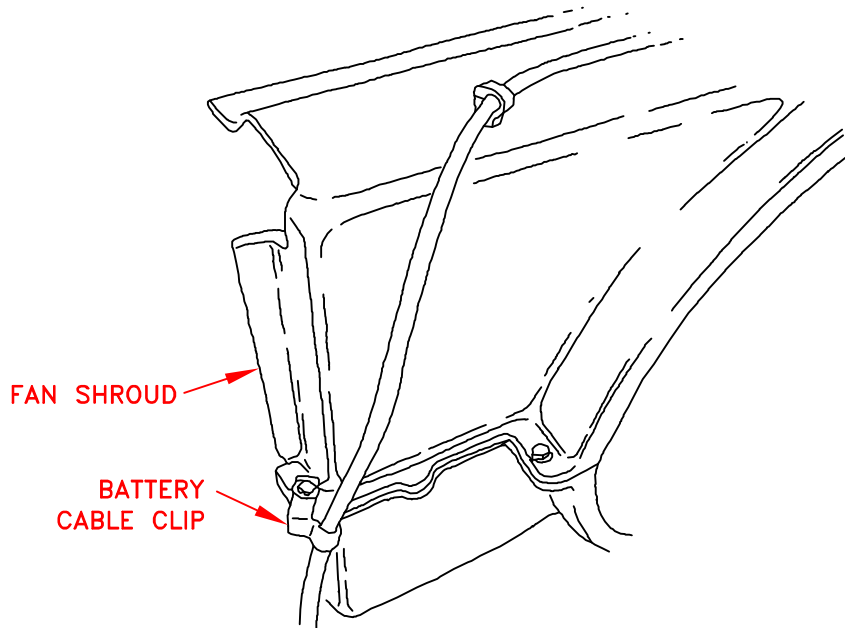


FIG. 3



DewEze

Clutch Pump Kit
#700081
Chevy 6.5L
Turbo Diesel
1995

INSTALLATION INSTRUCTIONS

NOTE: Suction hose to pump must be a wire braid hose; minimum 1" I.D. for 7 & 9 gpm pumps; 1- 1/4" I.D. for 12 & 17 gpm pumps. Installations with smaller suction hoses will void the pump warranty.

Refer to Fig. 2 for the following:

1. Locate ABS control module on inner fender on driver's side. Remove two OEM bolts from engine side of ABS control module (location F). These bolts will not be used again. Loosen two bolts at outer side of ABS module (location G).
2. Place .625" spacer (33) between ABS module mounting plate and the fender bracket at location F. Thread 8mm x 35mm bolt (32) through plate and into fender bracket. Tighten all bolts.

Refer to Fig. 1 for the following:

3. Remove fan and shroud.
4. Remove OEM serpentine belt. It will not be used again.
5. Remove four OEM bolts in crankshaft pulley.
6. Install the DewEze crankshaft pulley (2) using four 10mm x 120mm bolts (14).

NOTE: The flange is short on the OEM pulley that centers the DewEze pulley. Make sure the flange and the machined DewEze pulley are lined up before tightening bolts.

7. Remove OEM metric stud bolts in water pump pulley.
8. Install the four 8mm x 65mm stud bolts (15), with the short threaded end into the water pump.
9. Slide the fan extension (5) over the stud bolts and secure in place with two nuts (16) and flat washers (26). Do not mount fan at this time.
10. Remove OEM belt tensioner assembly.
11. Remove OEM bolts at Holes A, B, and D.
12. Remove bolts holding alternator and lay it back on top of valve cover to allow room to position DewEze bracket in place.
13. Lower DewEze bracket into position.

NOTE: Bracket will go between the power steering pump and pulley.

14. Place alternator back into position.
 15. At hole A use the 10mm x 150mm bolt (10), and lock washer, installing the 1.310" spacer (7) between bracket and engine.
 16. At Hole B use the 3/8" x 6 1/4" NC bolt (11), installing the .550" spacer (8) between the back leg of the DewEze bracket and the back of the alternator. Use the 3/8" lock nut (12) to secure.
 17. Install the 10mm X 40mm Bolt (13) at Hole D.
 18. Assemble, then install, the pump and clutch assembly onto the DewEze bracket.
 19. Install the OEM belt tensioner and new shorter serpentine belt (31) provided in kit.
 20. Install the A60 V-belts (23).
 21. Align the pump and clutch assembly with the crankshaft pulley, using a straight edge. Securely tighten the four 3/8" x 1 1/4" bolts (17) holding the pump assembly to bracket.
 22. Install the large idler pulley (3) using the 5/8" x 4" NC bolt (18) in the slot. Use 1.50" long x 1.250" O.D. spacer (9) and the machine bushings and flat washers (19, 20, and 21) as needed to align the idler pulley with the belts. Use 5/8" lock nut (22) and flat washer (21) to tighten the idler bolt.
 23. Install the small idler pulley (4) using the 5/8" x 4" NC bolt (18) in hole E. Use 1.50" long x 1.125" O.D. spacer (27) and the machine bushings and flat washers (19, 20, and 21) as needed to align the idler pulley with the belts. Use 5/8" lock nut (22) and flat washer (21) to tighten the idler bolt.
- NOTE: Check the clearance between the idler and the power steering lines. There should be at least .75" clearance. If not, gently bend the line away from the idler by tapping on a block of wood held against the line.**
24. With all belts tightened, run the engine and check for any installation or alignment problems. Adjust as needed. Retighten belts if needed.
 25. Remove the two nuts and flat washers holding the fan extension. Install fan onto fan extension using all four nuts with flat washers.
 26. Place fan shroud into position. Attach battery cable clip to bolt farthest from fan at middle of radiator shroud on driver's side. See Fig. 3. Tighten all bolts.
 27. Start and run the engine again, checking for any problems.