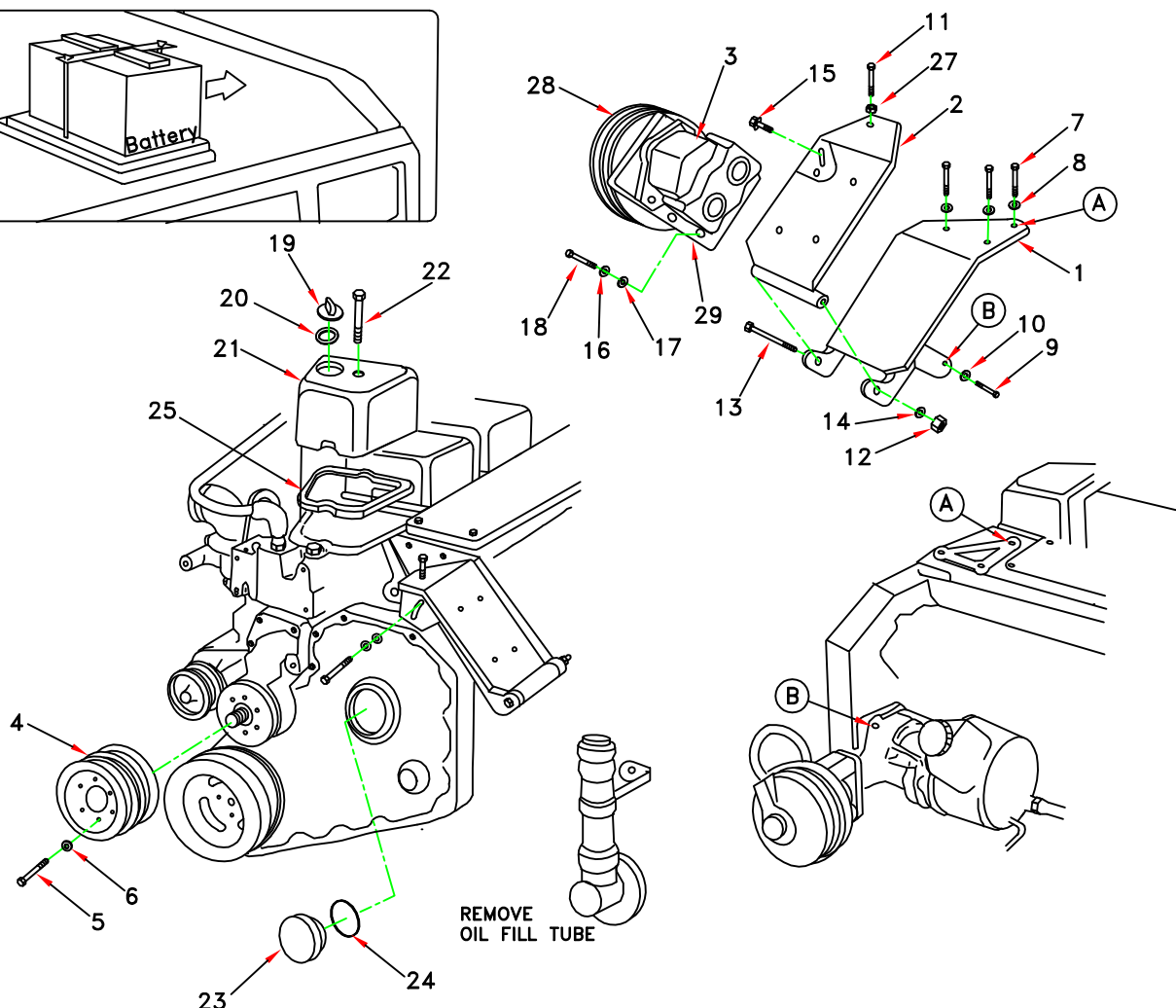
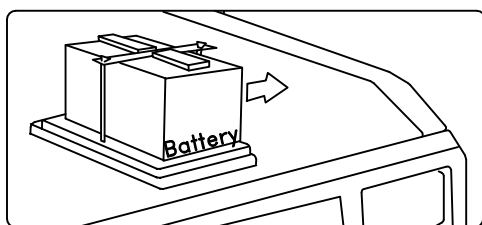


DEWEZE

710038	Bracket Assy. (Inc. items 1,2)	Clutch Pump Kit	700042
710488	Bracket Bolt Pkg. (Inc. items 7-18,27)	Make	Dodge
710450	Pulley Bolt Pkg. (Inc. items 5,6)	Engine Size	5.9L
NONE	Fan Spacer Bolt Pkg.	Fuel	Diesel
		Year	1989-91.5
		Options	
		Revised	10-7-93

ITEM	QUAN	PART #	DESCRIPTION
1.	1	710105	Pump Mounting Bracket
2.	1	710109	Pump Mounting Bracket
3.	1	*	Pump
4.	1	740036	Crankshaft Pulley
5.	6	710381	6mm X 16mm X 1 GR 10.9 Bolt
6.	6	110677	1/4" Lock Washer
7.	3	110479	10mm X 30mm X 1.5 Bolt
8.	3	110671	7/16" Lock Washer
9.	1	110577	12mm X 45mm X 1.75 Bolt
10.	1	110658	1/2" Flat Washer
11.	1	110553	1/2" X 2 1/2" NC Tap Bolt
12.	1	110610	1/2" NC Nut
14.	2	110405	1/2" Lock Washer
15.	1	110437	3/8" X 3/4" NC Wiz Bolt
16.	4	110672	3/8" Lock Washer
17.	4	110676	3/8" Flat Washer
18.	4	110425	3/8" X 1 1/4" NC Bolt
19.	1	OEM	Oil Fill Cap
20.	1	OEM	Gasket
21.	1	710379	Valve Cover
22.	1	OEM	Bolt
23.	1	710380	Cover, Fill Tube
24.	1	OEM	O-Ring
25.	1	OEM	Gasket
26.	2	740050	V-Belts, A50 W/Std.Clutch
		740127	V-Belts, A49 W/H.D.Clutch
27.	1	110642	1/2" NC Jam Nut
28.	1	740037	Clutch, Standard
		740038	Clutch, Heavy Duty
29.	1	710353	Footmount

* See Master List for Pump Part No.



(A) Denotes bolt holes in engine to locate corresponding holes in Pump Brkt.

Dodge - 5.9L Diesel
1989-1991.5
Clutch Pump Kit # 700042

INSTALLATION INSTRUCTIONS

NOTE: Suction hose to pump must be wire braid hose; minimum 1" I.D. for 7 & 9 gpm pumps; 1 1/4 " I.D. for 12 & 17 gpm pumps. Installations with smaller suction hoses will void the pump warranty.

1. Remove fan and shroud.
2. Loosen OEM belt.
3. Remove OEM pulley above the crankshaft pulley.
4. Install DewEze pulley (4).
5. Remove OEM fill tube from the front of the engine. Save O-ring(24).
6. Place O-ring (24) inside fill tube cover (23). Screw cover into hole.
7. Remove OEM front valve cover. Save gasket (25) and keep in place. Install new valve cover (21), supplied in DewEze Kit, using OEM bolt (22).
8. Place gasket (20) onto OEM oil filler cap (19) and screw into valve cover.
9. Loosen the battery hold-down bracket and move battery toward fender as far as possible to allow clearance for the clutch pulley.

NOTE: Hold-down bracket needs to be shortened and another hole drilled to allow battery to move far enough.

10. Install bracket (1) on engine. Tighten bolts.
11. Install bracket (2) onto bracket (1).
12. Install clutch (28) onto pump (3). Install pump and clutch onto bracket (2). Do not tighten bolts yet.
13. Align the clutch pulley and drive pulley (4) by placing a straight edge across the front surface of both pulleys. Tighten the four pump mounting bolts (18).
14. Install two V-Belts, A50 with standard clutch or A49 with heavy duty clutch.
15. Thread jam nut (27) onto bolt (11) and screw bolt into bracket (2) until V-Belts are tight.
16. Start and run engine, checking for vibration or alignment problems.
17. Trim away fan shroud as needed to allow clearance for clutch pulley.
18. Install fan and fan shroud.
19. Run engine, checking for clearance, vibration and alignment.